

People's Democratic Republic of Algeria
Ministry of Higher Education and Scientific Research
University Ibn Khaldoun Tiaret
Faculty of Natural Sciences and Life



Basics Principles of Remote Sensing And GIS



This course is intended for master students in Ecosysteme Steppique et Saharien, Agro-écologie, Biodiversité et écologie végétale, and Agréiculture de précision.

Bachir Kaddar

April, 2022

Contents

Contents	1
Preface	7
I. Chapter I : Remote Sensing	8
I.1 What is remote sensing ?.....	9
I.2 Remote Sensing Process	9
I.3 Electromagnetic Spectrum	10
I.3.1 The visible spectrum.....	10
I.3.2 The infrared (IR) region.....	11
I.3.3 The microwave region	11
I.4 Electromagnetic Interactions.....	12
I.4.1 Interactions with the Atmosphere	12
I.4.1.1 Scattering.....	13
I.4.1.2 Absorption	14
I.4.2 Interactions with the Target	14
I.4.2.1 Absorption	14
I.4.2.2 Transmission.....	14
I.4.2.3 Reflection.....	15
I.5 Spectral response (Spectral Signatures)	15
I.5.1 Examples of interaction with target (Spectral response)	16
I.5.1.1 Vegetation	16
I.5.1.2 Water.....	16
I.5.1.3 Soil	16
I.5.2 Spectral Properties and Principal Applications	17
I.6 Remote Sensing Platforms Systems.....	17
I.6.1 Ground based sensors	18
I.6.2 Airborne	18
I.6.3 Satellite.....	18
I.6.3.1 Geostationary Orbits	19
I.6.3.2 Sun Synchronous Orbits.....	20
I.7 Remote Sensing Sensors.....	20
I.7.1 Types of Remote Sensing sensor	21
I.7.1.1 Passive Remote Sensing.....	21
I.7.1.2 Active Remote Sensing	21
I.8 Satellite resolution	22

I.8.1	Spectral resolution	22
I.8.1.1	Optical/thermal imaging systems	23
I.8.1.2	Synthetic aperture radar imaging systems	23
I.8.2	Spatial resolution	23
I.8.3	The coverage area and the temporal coverage	24
I.9	Examples of Remote sensing satellites	25
I.9.1	Landsat Satellite	25
I.9.2	Sentinel-2 Satellite.....	27
I.9.3	ASTER Satellite	28
I.9.4	MODIS Products	29
I.10	Suggested Reading	30
II.	Chapter II : Aerial and Satellite Images.....	31
II.1	Remotely sensed image.....	32
II.2	Pixels.....	32
II.3	Characteristics of Remotely sensed images.....	33
II.4	Types of Remotely sensed images	33
II.4.1	Aerial photography	34
II.4.2	Satellite imagery :	34
II.4.3	Differences between Aerial photography and Remote sensing imagery :	35
II.5	Resolution and Sampling in Remotely Sensed Data	37
II.5.1	The spatial resolution.....	37
II.5.1.1	Spectral resolution :	38
II.5.1.2	Temporal resolution :	38
II.5.1.3	The radiometric resolution	39
II.5.1.4	Choosing Resolution	40
II.6	Spectral satellite imaging.....	40
II.6.1	The panchromatic mode :	40
II.6.2	The multispectral (color) mode :.....	41
II.6.3	Hyperspectral Imaging.....	41
II.6.4	Difference between multispectral and hyperspectral.....	41
II.7	Color Composites	42
II.7.1	Natural or True Color Composites	43
II.7.2	False Color Composites	43
II.7.2.1	Vegetation Indices	44
II.7.3	Pseudo-natural colour composites	45
II.8	Image fusion.....	45

II.8.1	IHS Transformation.....	45
II.8.2	The HSV.....	46
II.8.3	The PCA method.....	46
II.8.4	Band Substitution.....	47
II.8.5	Brovey Transform.....	47
II.9	Band ratioing.....	47
II.10	Suggested Reading.....	48
III.	Chapter III : Remote Sensing Image Processing.....	49
III.1	Image processing.....	50
III.2	Pre-processing of satellite images.....	50
III.2.1	Radiometric Correction.....	50
III.2.1.1	The Sun Angle/Topography radiometric corrections.....	51
III.2.1.2	Sensor irregularity corrections.....	51
III.2.2	Atmospheric Corrections.....	51
III.2.2.1	Absolute correction.....	52
III.2.2.2	Relative Correction.....	52
III.2.3	Geometric correction.....	52
III.2.3.1	System correction.....	53
III.2.3.2	Mapping transformation.....	53
III.2.3.3	Combined method.....	53
III.3	Image Transformation.....	53
III.3.1	Image Enhancement.....	53
III.3.1.1	Spectral enhancement.....	54
III.3.1.2	Spatial enhancement.....	56
III.3.2	Feature Extraction.....	58
III.3.2.1	Spectral features:.....	59
III.3.2.2	Geometric features:.....	59
III.3.2.3	Textural features.....	59
III.4	Image Classification.....	59
III.4.1	Supervised classification.....	60
III.4.2	Unsupervised classification.....	61
III.5	Suggested reading.....	62
IV.	Chapter IV : Geographic Information System (GIS).....	63
IV.1	What is Geographic Information System (GIS).....	64
IV.2	Basic concepts of GIS.....	64
IV.2.1	GIS data.....	64

IV.2.2	Entity	64
IV.2.3	Feature	65
IV.2.4	Objects.....	65
IV.2.5	Coordinates.....	65
IV.2.5.1	Standard coordinate systems	65
IV.2.5.2	Cartesian systems	66
IV.2.5.3	Spherical coordinate systems	66
IV.2.6	Attribute data.....	67
IV.2.6.1	Nominal attributes.....	67
IV.2.6.2	Ordinal attributes	68
IV.2.6.3	Interval/ratio attributes.....	68
IV.3	GIS Components	68
IV.3.1	Hardware for GIS	69
IV.3.2	GIS Software	69
IV.3.3	Data and GIS	69
IV.3.3.1	Sources of data	69
IV.3.3.2	Data input techniques.....	70
IV.3.3.3	Data editing and quality assurance.....	70
IV.4	Spatial data model.....	71
IV.4.1	Vector data models	71
IV.4.1.1	The spaghetti model	72
IV.4.1.2	The topological data model	72
IV.4.1.3	Advantages and disadvantages of the Vector Model.....	72
IV.4.2	Raster data models.....	73
IV.4.2.1	Advantages and disadvantages of the Raster Model	73
IV.4.3	Comparison of Raster and Vector Data Models.....	73
IV.5	GIS Spatial data organization	74
IV.6	Spatial analyse methodes	75
IV.7	Spatial database	75
IV.7.1	Database management system (DBMS).....	76
IV.7.2	Factors Affecting the Adoption of GIS systems.....	76
IV.7.3	GIS Application.....	77
IV.8	Suggested reading	78
V.	Chapter V : ARCGIS Software.....	79
V.1	What is ArcGIS ?	80
V.2	What can do with ArcGIS ?	80

V.3	ArcGIS software?	80
V.3.1	ArcCatalog.....	80
V.3.2	ArcMap.....	81
V.3.3	ArcGlobe	81
V.3.4	ArcToolbox	82
V.4	Exploring geographic data in ArcCatalog	83
V.4.1	Menu bar :	83
V.4.2	Exploration window	84
V.4.3	Visualizatio window	84
V.4.4	Tool bars.....	84
V.5	Types of geographic data.....	84
V.6	Handling geographic data files in ArcCatalog	85
V.6.1	Shape file.....	86
V.6.2	Coverage.....	87
V.6.3	Tabular data	87
V.6.4	Map document	88
V.6.5	Geodatabase.....	88
V.6.6	Feature classes	89
V.6.7	Feature dataset	89
V.7	Data management.....	90
V.8	Help in ArcCatalog	91
V.9	Open an ArcMap project	91
V.10	Structure of an ArcMap project	92
V.10.1	Table of Contents.....	92
V.10.2	Visualization window	93
V.10.3	Menu bar.....	93
V.10.4	Toolbars.....	93
V.11	Managing layer visibility and selections	93
V.11.1	Managing layer selection	93
V.11.2	Managing layer visibility	94
V.11.2.1	List Default visibility	94
V.11.2.2	List By Drawing Order Visibility.....	94
V.11.2.3	List by visibility.....	95
V.12	Set Data Source.	95
V.13	Set the visualization scale range of a layer.	95
V.14	Definition of the environment coordinate system	96

V.14.1	Coordinate system for a ArcMap project.	96
V.14.2	Coordinate system for a Map Layer.....	96
V.15	Add data.	97
V.15.1	17.1. Add data present on your PC using the “Add data” button	97
V.15.2	17.2. Add XY point data (GPS for example) to from a spreadsheet (Excel or Access for example).97	
V.16	The attribute table.....	98
V.16.1	Access to the attribute table.	98
V.16.2	Opening the attribute table.....	99
V.16.3	The identification tool.....	99
V.17	Select data	99
V.17.1	Simple selection.....	99
V.17.2	Selection by Attribute.	100
V.17.3	Verify if a selection is correct:.....	101
V.17.4	Selection by Location	101
V.17.5	Other features available for selections	101
V.18	Create a file from a selection layer or Export file.	102
V.19	Join and Relationship between 2 tables.	102
V.19.1	Create a join between 2 tables	103
V.19.2	Join based on an attribute common to 2 tables.....	103
V.19.3	Join based on feature location of 2 files.....	104
V.20	Create a relationship between 2 tables.....	105
V.21	Calculate statistics in the attribute table	106
V.21.1	The “Summarize” tool.....	106
V.21.2	The “Statistics” tool.....	107
V.22	Suggested reading	108
Appendix	109

Preface

In recent decades, remote sensing and Geographic Information System (GIS) technology have been successfully used in a wide range of applications thanks to important advances in the integration of remote imagery, computer processing, and spatial analysis technologies. This manuscript provides a general introduction to remote sensing imagery and the capabilities of GIS technology for data analysis. The goal is to show the potential of an integration of these tools and technologies in the field of spatial data modeling, such as resource management and environmental monitoring.

This manuscript is divided into five distinct chapters, namely:

- **Chapter I** provides an introduction to the fundamental concepts of remote sensing data acquisition. It also explores different types of platforms and sensors and their resulting remote sensing applications.
- **Chapter II** considers the properties and characteristics of digital remotely sensed imagery. It describes some image fusion techniques that assist satellite image interpretation.
- **Chapter III** looks at the various image processing techniques that are commonly used for remote sensing image analysis and interpretation, including preprocessing, transformation, and correction methods.
- **Chapter IV** provides a general introduction to Geographic Information System (GIS) including basic concepts and examples of its applications.
- **Chapter V** provides a step-by-step guide to the most important GIS software « ArcGIS » with their technical characteristics.

I. Chapter I : Remote Sensing

I.1 What is remote sensing ?

Remote sensing is the process of detecting and monitoring the physical characteristics of an area by measuring its reflected and emitted radiation at a distance using instruments which are remote to the earth's surface, usually from aircraft or satellites.

I.2 Remote Sensing Process

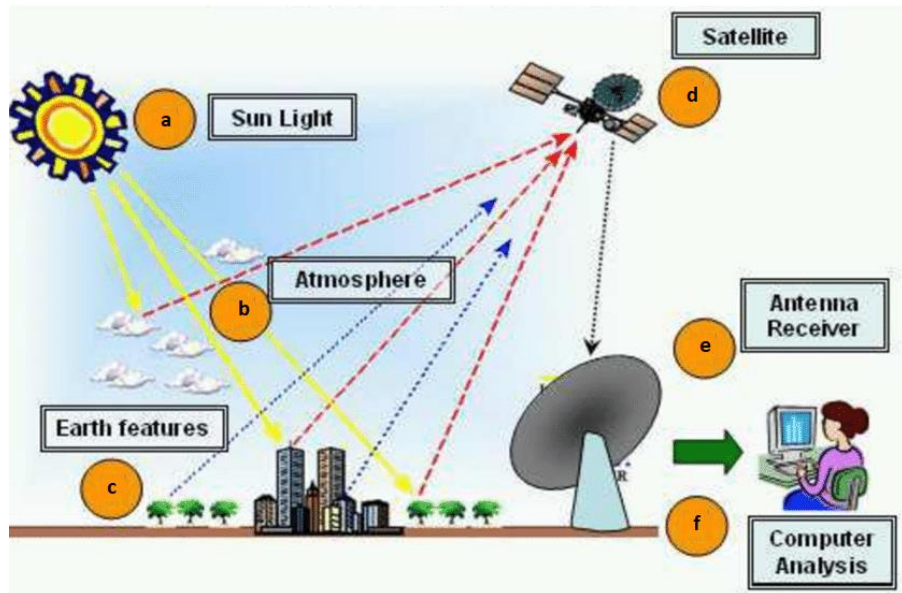


Figure. I.1. Remote Sensing Process.

[https://www.researchgate.net/figure/Remote-Sensing-Process_fig2_328233099]

a. Energy Source or Illumination

The energy source illuminates or provides electromagnetic energy to the target of interest.

b. Radiation and the Atmosphere

As the energy travels from its source to the target, it will come in contact with and interact with the atmosphere it passes through.

c. Interaction with the Target

Once the energy reached the target through the atmosphere, it interacts with the target depending on the properties of both the target and the radiation.

d. Recording of Energy by the Sensor

After the energy has been scattered by, or emitted from the target, a remote sensor collects and record at distance the electromagnetic radiation.

e. Transmission, Reception, and Processing

The energy recorded by the sensor has to be transmitted, often in electronic form, to a receiving and processing station where the data are processed into an image.

f. Interpretation and Analysis

The processed image is analysed and interpreted to extract information about the target which was illuminated.

I.3 Electromagnetic Spectrum

Light emitted by the sun is composed of several different wavelengths, and the full range of wavelengths is called the electromagnetic spectrum. The electromagnetic spectrum ranges from the shorter wavelengths (including gamma and x-rays) to the longer wavelengths (including microwaves and broadcast radio waves) (see **Figure. I.2.**). There are several regions of the electromagnetic spectrum which are useful for remote sensing including :

- The visible spectrum ;
- The infrared (IR) region ;
- The microwave region.

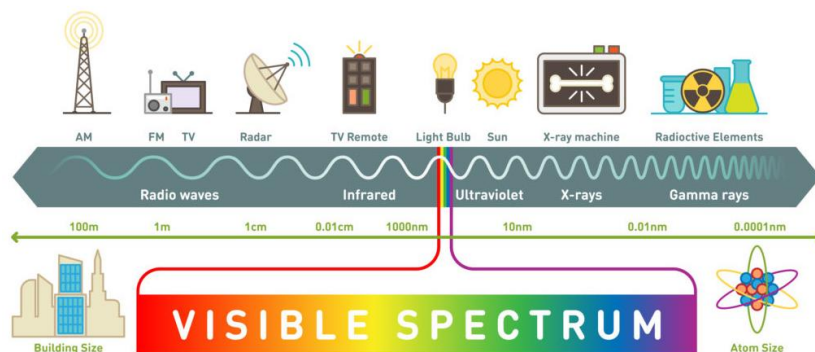


Figure. I.2. Electromagnetic Spectrum.

[<https://www.science-sparks.com/what-is-the-electromagnetic-spectrum/>]

I.3.1 The visible spectrum

The light which our eyes can detect is part of the visible spectrum. The visible wavelengths cover a range from approximately 0.4 to 0.7 mm (see **Figure. I.3.**). The longest visible wavelength is red and the shortest is violet. The visible portion is small relative to the rest of the spectrum.

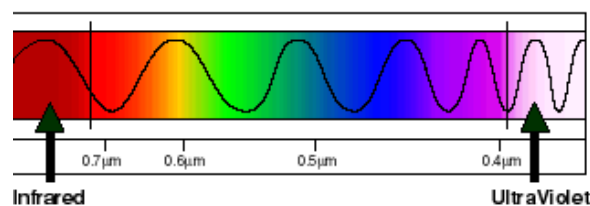


Figure. I.3. The visible spectrum.

[https://www.univie.ac.at/geographie/fachdidaktik/FD/site/external_https://imagers.gsfc.nasa.gov/ems/visible.html]

Common wavelengths of from the visible portion of the spectrum are listed below.

- **Violet:** 0.4 - 0.446 μm
- **Blue:** 0.446 - 0.500 μm
- **Green:** 0.500 - 0.578 μm
- **Yellow:** 0.578 - 0.592 μm
- **Orange:** 0.592 - 0.620 μm
- **Red:** 0.620 - 0.7 μm

I.3.2 The infrared (IR) region

The infrared (IR) region covers the wavelength range from approximately 0.7 mm to 100 mm (see **Figure. I.4.**). It is more than 100 times as wide as the visible portion.

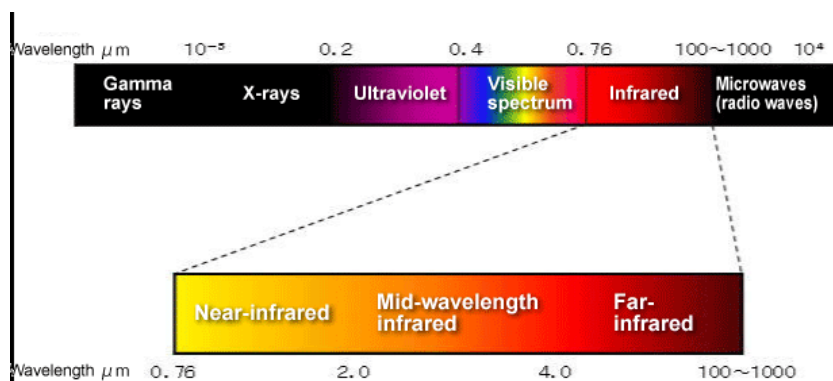


Figure. I.4. The infrared (IR) region spectrum.

[<https://www.thermo-r.com/introduction-to-infrared-radiation/>]

The infrared region can be divided into two categories based on their radiation properties :

a. The reflected IR

Covers wavelengths from approximately 0.7 mm to 3.0 mm.

b. The thermal IR

This energy is essentially the radiation that is emitted from the Earth's surface in the form of heat. The thermal IR covers wavelengths from approximately 3.0 mm to 100 mm.

I.3.3 The microwave region

The portion of the spectrum of more recent interest to remote sensing is the microwave region from about 1 mm to 1 m (see **Figure. I.5.**). This covers the longest wavelengths used for remote sensing.

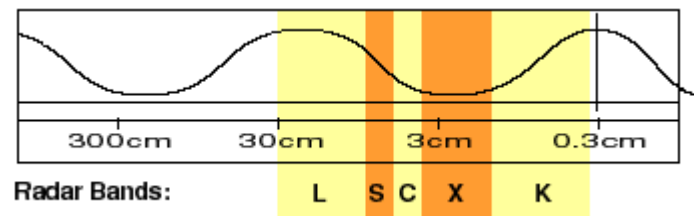


Figure. I.5. The microwave region spectrum.

[<https://www.thermo-r.com/introduction-to-infrared-radiation/>]

The radiation in the visible and near visible regions of the spectrum are the most frequently used data sources in natural resources assessment applications of remote sensing

I.4 Electromagnetic Interactions

There are two fundamental interactions of the incident electromagnetic energy from the sun (see **Figure. I.6.**):

- Interactions with the Atmosphere ;
- Interactions with the target.

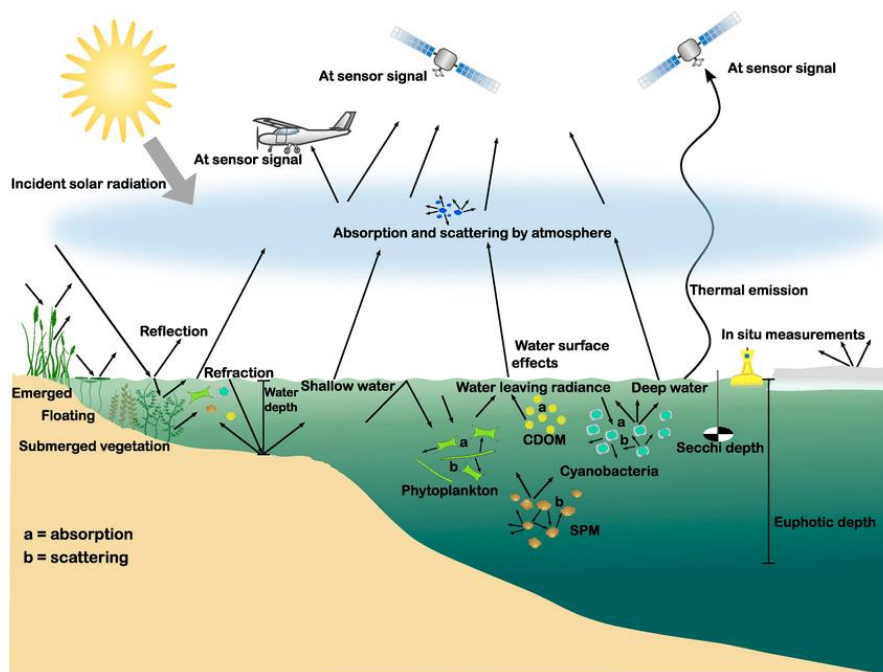


Figure. I.6. The electromagnetic interactions.

[https://www.researchgate.net/figure/Schematic-diagram-of-the-interaction-between-the-main-optically-active-substances-in-the_fig4_358017599]

I.4.1 Interactions with the Atmosphere

The atmosphere influences the incoming radiation by different forms (see **Figure. I.7.**). Natural materials that are present in the atmosphere, e.g., particles, liquid water and atmospheric gasses, affect the incoming light energy and radiation by two principal mechanisms : **scattering and absorption.**

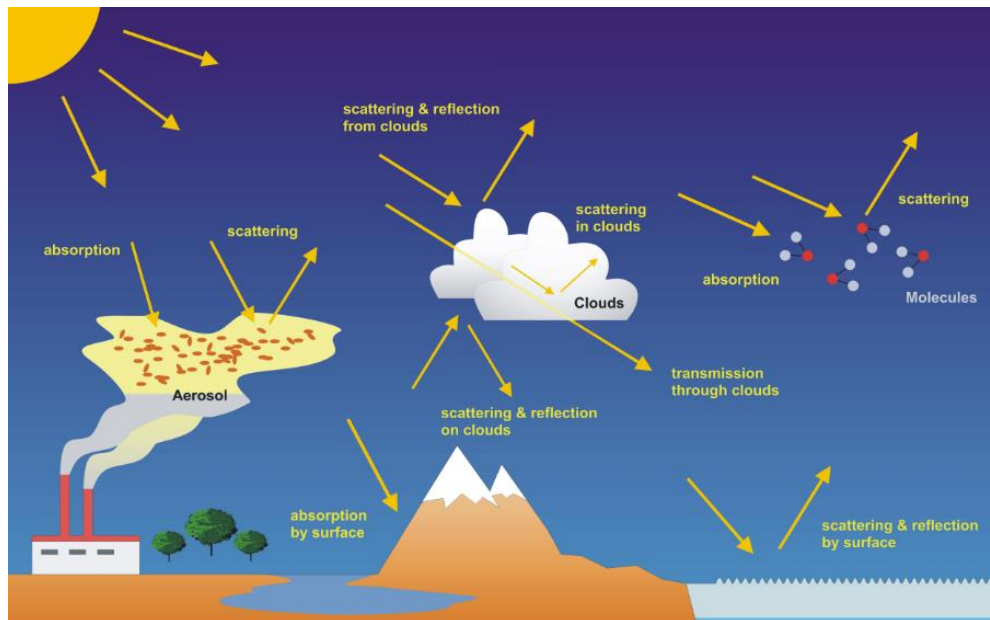


Figure. I.7. Interactions with the atmosphere.

[https://atmos.eoc.dlr.de/projects/scops/sciamachy_book/sciamachy_book_figures_springer/chapter_7_figures_springer.html]

I.4.1.1 Scattering

Scattering is a process of diffusion, caused by redirecting of the radiation by large gas molecules in the atmosphere. There are three different types of scattering which take place depends on the wavelength of the radiation, the abundance of particles or gases, and the distance the radiation travels through the atmosphere (see **Figure. I.7.**) :

- Rayleigh scattering.
- Mie scattering.
- Nonselective scattering.

a. Rayleigh scattering

Rayleigh scattering is the dominant scattering mechanism in the upper atmosphere. It takes place when particles are very small compared to the wavelength of the radiation. Therefore, rayleigh scattering causes shorter wavelengths of energy to be scattered much more than longer wavelengths. Thus, as sunlight passes through the atmosphere, the shorter wavelengths (i.e. blue) of the visible spectrum are scattered more than the other (longer) visible wavelengths.

b. Mie scattering

Mie scattering takes place mostly in the lower portions of the atmosphere where concentrations of larger particles increase, and dominates when cloud conditions are overcast. These particles are just about the same size as the wavelength of the radiation. Dust, pollen, smoke and water vapour are common causes of Mie scattering which tends to diffuse longer wavelengths than those affected by Rayleigh scattering.

c. Nonselective scattering

Nonselective scattering occurs when the particles are much larger than the wavelength of the radiation. This type of scattering result where water droplets and large dust particles are present. All wavelengths, from visible light up to the reflected infrared portion of the spectrum, are scattered about equally.

I.4.1.2 Absorption

The second type of interaction with atmosphere is absorption. This phenomenon causes molecules in the atmosphere to absorb energy at various wavelengths (see **Figure. I.7.**). Water vapour, carbon dioxide and ozone, are the most important absorbers of the incoming solar radiation in atmosphere. The absorption causes a loss of energy, diminishing the energy arriving at the surface of the earth.

I.4.2 Interactions with the Target

Radiation that is not absorbed or scattered in the atmosphere can reach and interact with the Earth's surface. The most common forms of remote sensing are based on reflected electromagnetic energy (see **Figure. I.8.**). Different materials reflect different amounts of incoming energy, and this differential reflectance gives objects a distinct appearance. We use these differences to distinguish among objects.

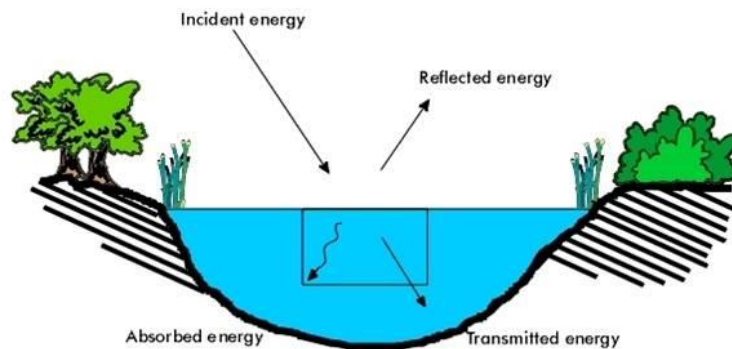


Figure. I.8. The Interactions with the Target.

[https://www2.geog.soton.ac.uk/users/trevesr/obs/rseo/energy_interactions_with_the_earths_surface.html]

Depends on the characteristics of the surface features and the wavelength of the incident radiation, three forms of interaction can take place when the incident energy reaches the surface:

- Absorption;
- Transmission;
- Reflection.

I.4.2.1 Absorption

Absorption occurs when radiation (energy) is absorbed into the target.

I.4.2.2 Transmission

Transmission occurs when radiation passes through a target.

I.4.2.3 Reflection

Reflection occurs when radiation reflect the target and is redirected. Measuring the radiation reflected from targets represent the most important objectif of remote sensing. We refer to two types of reflection in which energy is reflected from a target (see **Figure. I.9.**) :

- Specular reflection ;
- Diffuse reflection.

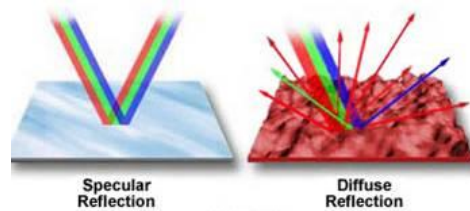


Figure. I.9. Specular and diffuse reflection.

[https://www2.geog.soton.ac.uk/users/trevesr/obs/rseo/energy_interactions_with_the_earths_surface.html]

a. Specular or mirror-like reflection

Specular or mirror-like reflection takes place when a target surface is smooth. In this case, main part of the energy is directed away from the surface in a single direction.

b. Diffuse reflection

Diffuse reflection takes place when the target surface is coarse and the energy is reflected almost uniformly in all directions.

I.5 Spectral response (Spectral Signatures)

Depending on the composition complexity level of the target that is being observed at, and the wavelengths of radiation involved, we can distinguish very different responses to the mechanisms of absorption, transmission, and reflection. The spectral response for this object can be obtained by measuring the energy that is reflected (or emitted) by targets on the Earth's surface over a variety of different wavelengths.

The comparison of the response patterns corresponding to different features, allows to distinguish between them, where it is not the case, if we only compared them using only on one wavelength. For example, if we consider water and vegetation, their spectral responses are similar in the visible wavelengths but are almost always separable in the infrared.

It should be noted that the spectral response can be quite variable, even for the same target type, and can also vary with time and location.

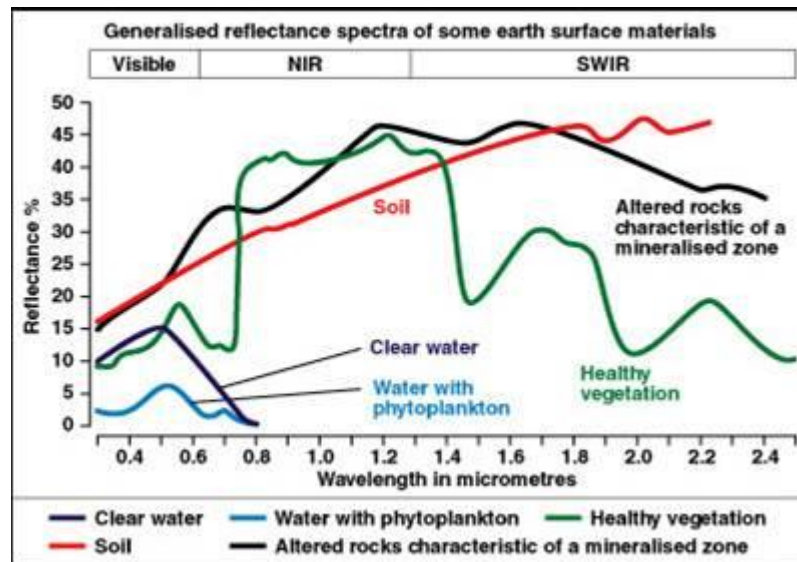


Figure. I.10. Spectral response.

[https://www2.geog.soton.ac.uk/users/trevesr/obs/rseo/energy_interactions_with_the_earths_surface.html]

I.5.1 Examples of interaction with target (Spectral response)

In environmental mapping applications, the basic objects under investigation are often vegetation (species, cover, status, etc.), soils and geology (type of geological structure, soil type, etc.) and water (availability, quality, etc.). Knowing the basic principles of how these reflect in different wavelength bands will help an interpreter in the mapping work. **Figure. I.10.** shows the spectral reflectance curve for green vegetation, soil and water.

I.5.1.1 Vegetation

Healthy vegetation absorbs blue and red wavelengths but reflects green and infrared. Vegetation has a small peak in reflection in the green band making it appear green to the human eye, but as seen, the maximum reflectance of vegetation is in the NIR band, in the 13 range 0.7 to 1.4 μm . Since we can't see infrared radiation, we see healthy vegetation as green.

I.5.1.2 Water

Water absorbs longer visible wavelengths (green and red) and near-IR radiation more than shorter visible wavelengths (blue). Thus, Water usually looks blue or blue-green. Reflection is highest towards the blue band and into the UV-band. On the other hand, water will appear brighter when some sediment are present in the upper layers. To distinguish water bodies from other features radiation, the NIR band should be used since water will appear as almost black in this range of spectrum.

I.5.1.3 Soil

The spectral signature of soil is characterised by a moderate variation over the range of wavelengths. Soil reflectance is affected by moisture, texture, and mineral content, colour (presence of different oxides, etc.) and the content of organic matter. Dry soils reflect more radiation than humid and coarse textured soils more than fine textured under normal humidity conditions.

I.5.2 Spectral Properties and Principal Applications

Example in Landsat TM/ETM

Band	Wavelength (μm)	Principal applications
B-1	0.45 - 0.52 (Blue)	<ul style="list-style-type: none"> • Mapping coastal water areas. • Differentiating between soil and vegetation. • Forest type mapping. • Detecting cultural features.
B-2	0.52 - 0.60 (Green)	<ul style="list-style-type: none"> • Corresponds to the green reflectance of healthy vegetation. • Identification of cultural feature.
B-3	0.63 - 0.69 (Red)	<ul style="list-style-type: none"> • Discriminating between many plant species. • Determining soil boundary and geological boundary delineations as well as cultural features.
B-4	0.76 - 0.90 (Near-Infrared)	<ul style="list-style-type: none"> • Responsive to the amount of vegetation biomass present in a scene. • Identification of crop and emphasizes soil/crop and land/water contrasts.
B-5	1.55 - 1.75 (Mid-Infrared)	<ul style="list-style-type: none"> • Sensitive to the amount of water in plants. • Study of crop drought. • Analysis of plant health. • Discriminating between clouds, snow, and ice.
B-6	10.4 - 12.5 (Thermal Infrared)	<ul style="list-style-type: none"> • Detection of vegetation and crop stress, heat intensity, insecticide applications, and for locating thermal pollution. • Locate geothermal activity.
B-7	2.08 - 2.35 (Mid-Infrared)	<ul style="list-style-type: none"> • Discrimination of geologic rock type and soil boundaries, as well as soil and vegetation moisture content.

Table. I.1. Spectral Properties and Principal Applications of Landsat TM/ETM.

I.6 Remote Sensing Platforms Systems

Platforms refer to the structures or vehicles on which remote sensing instruments are mounted, i.e. satellite, aircraft, balloon, etc....

There are three broad categories of remote sensing platforms (see **Figure. I.11.**):

- Ground based ;
- Airborne ;
- Satellite.

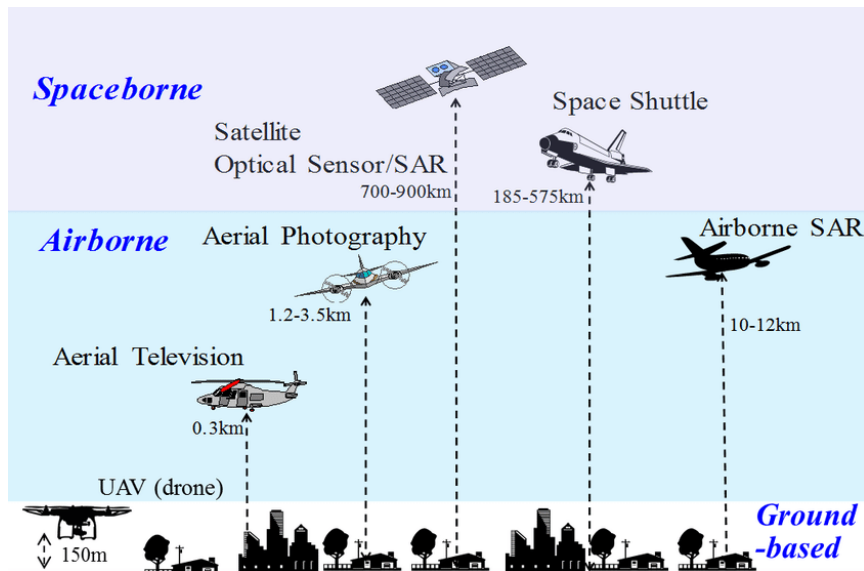


Figure. I.11. Remote Sensing Platforms.

[https://www.researchgate.net/figure/Various-platforms-and-sensors-used-for-remote-sensing_fig1_307351403]

I.6.1 Ground based sensors

Ground-based instruments are used when the area under study are relatively small. For example, to study properties of a single plant or a small patch of grass, it would make sense to use a ground based instrument. Common ground based platforms used in remote sensing are hand held devices, towers and cranes.

I.6.2 Airborne

In the early remote sensing applications, airborne platforms were the main non-ground-based platforms for the acquisition of aerial photography.

I.6.3 Satellite

Satellites are the most common remote sensing stable spaceborne platforms. The first remote sensing satellite was launched in 1960 for meteorology purposes. Remote sensing satellites are used for environmental monitoring, meteorology, and cartography. Satellites has the advantage of offering very long periods of operation, using repetitive orbits and providing global coverage.

A satellite orbit is the curved path that a satellite in space takes around the earth due to gravity (see **Figure. I.12.**). A satellite follows a generally elliptical orbit around the earth.

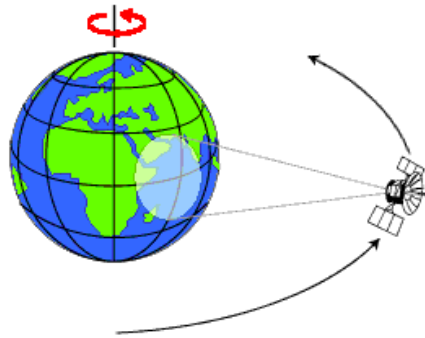


Figure. I.12. Satellite Orbit.

[<https://www.nrcan.gc.ca/maps-tools-and-publications/satellite-imagery-and-air-photos/tutorial-fundamentals-remote-sensing/satellites-and-sensors/satellite-characteristics-orbits-and-swaths/9283>]

A satellite orbit is characterized by :

- **The orbital period** : is the time taken by the satellite to complete one revolution of the orbit.
- **The repeat cycle of the satellite** : refers to the time interval at which the satellite repeats its path.
- **Altitude** : is the satellite's distance from the Earth's surface. Common remote sensing satellites typically maintain higher orbits ranging from 600 to 1000 km.

These satellite orbital characteristics determine the frequency at which a satellite sensor can acquire data. For most remote sensing satellites the total coverage frequency ranges from twice a day to once every 16 days.

Satellites can be classified by their orbital geometry characteristics and timing. There are two principal types of satellite orbit:

- Geostationary ;
- Sun Synchronous.

I.6.3.1 Geostationary Orbits

The satellite appears stationary with respect to the Earth's surface (see **Figure. I.13.**).

Satellites in the geostationary orbits are located at a very high altitude of 36,000 km. This enable to the satellite to cover the same large area on the earth at all times. Especially, the geostationary orbits are commonly used by meteorological satellites.

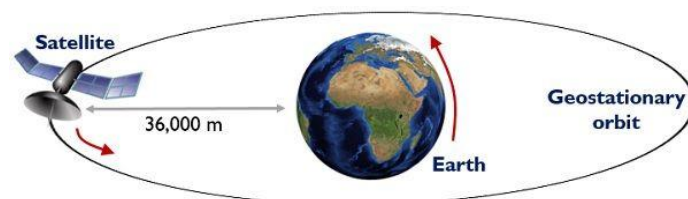


Figure. I.13. Geostationary satellite orbit.

[<https://electronicsdesk.com/geostationary-orbit.html>]

Advantages of geostationary orbits are :

- Fixed position on specific location
- Same speed as earth rotation speed
- Wide area coverage
- Especially designed for weather monitoring

However, disadvantages include the typically low spatial resolution which results from high altitude.

I.6.3.2 Sun Synchronous Orbits

The satellite with a sun-synchronous orbit always passes over a location at a given latitude at the same local solartime. (see **Figure. I.14.**). Thus, the image acquisition process occurs in the same solarillumination condition. Most of the earth resources satellites are sun-synchronous orbit.

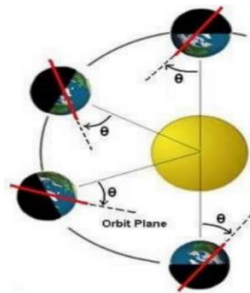


Figure. I.14. Sunsynchronous satellite orbit.

[\[https://fr.wikipedia.org/wiki/Orbite_h%C3%A9liosynchrone\]](https://fr.wikipedia.org/wiki/Orbite_h%C3%A9liosynchrone)

Examples :

Landsat TM/ETM, SPOT, ALOS, IKONOS, QuickBird.

I.7 Remote Sensing Sensors

Sensors are devices that receive and measure radiation over a range of electromagnetic spectrum wavelengths, called bands, which corresponds to the brightness in a given direction toward the sensor. The measures are quantized and converted into a signal that can be recorded as digital image. Sensors can be on board of airplanes or on board of satellites. **One platform can carry more than one sensor.**

Examples :

Platform Name	Sensor Name
Landsat TM	Thematic Mapper
Landsat ETM	Enhanced Thematic Mapper
ALOS	PRISIM AVNIR-2 PALSAR

FigureTable. I.2. Example of Remote sensing Platforms.

I.7.1 Types of Remote Sensing sensor

There are two types of remote sensing sensors (see **Figure. I.15.**) :

- Passive Remote Sensing
- Active Remote Sensing.

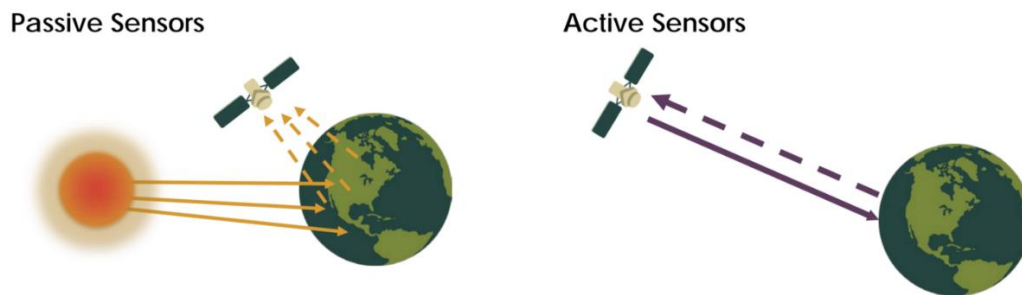


Figure. I.15. Types of Remote Sensing.

[\[https://fr.wikipedia.org/wiki/Orbite_h%C3%A9liosynchrone\]](https://fr.wikipedia.org/wiki/Orbite_h%C3%A9liosynchrone)

I.7.1.1 Passive Remote Sensing

Remote sensing systems which use energy generated by the sun are called passive sensors. Only the surface reflected energy provides information on the features of interest. Most aerial images and satellite data are collected using passive systems. Such systems are not useful during cloudy or extremely hazy periods because nearly all the energy is scattered and no directly reflected energy may reach the sensor.

a. Advantages

- Generally simpler in design (built only to receive energy) ;
- Provide very useful information for monitoring plant and canopy properties.

b. Disadvantages

- Require sunlight in order for useful data to be acquired.
- Data acquisition is very dependent on lighting (time of day, time of year, latitude) and weather conditions.
- Interference problems with environment (the signals can be greatly altered due to atmospheric effects)

I.7.1.2 Active Remote Sensing

Active remote sensing system provide their own source of electromagnetic radiation to illuminate the target under investigation. The sensor detects and measures the radiation reflected from that target.

Examples :

Radar (radio detection and ranging) is the most common active remote sensing system, while the use of LiDAR systems (light detection and ranging), is increasing. Because a given radar

system is typically restricted to one wavelength, radar images are usually monochromatic (in shades of gray).

a. Advantages

- These images may be collected day or night ;
- Most radar systems penetrate clouds because water vapor does not absorb the relatively long radar wavelengths.
- Do not require solar illumination of surfaces or perfect weather conditions to collect useful data.
- Can be deployed in conditions of haze, clouds, or light rain (depending on the wavelength of the system).
- The ability to obtain measurements anytime, regardless of the time of day or season.
- Can be used for examining wavelengths that are not sufficiently provided by the sun, such as microwaves, or to better control the way a target is illuminated.

b. Disadvantages

- Active systems require the generation of a fairly large amount of energy to adequately illuminate targets.

I.8 Satellite resolution

The platform on which a particular sensor is carried determines a number of attributes, which may dictate the use of particular sensors. These attributes include: distance the sensor is from the object of interest, periodicity of image acquisition, timing of image acquisition, and location and extent of coverage. Therefore, the resulting images have different characteristics (resolutions) depending on the sensor. Each of these satellite-sensor platform is characterised by :

- Spectral resolution ;
- Spatial resolution ;
- The coverage area and the temporal coverage.

I.8.1 Spectral resolution

The spectral resolution is the number and location in the electromagnetic spectrum of the spectral bands employed in image acquisition, for each band corresponds an image (see **Figure. I.16.**).

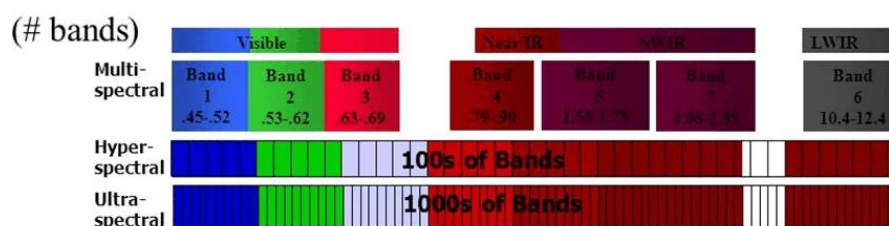


Figure. I.16. Spectral resolution.

[<https://www.onestopgis.com/Aerial-Photography/Digital-Imaging/Digital-Image/2-Sensor-Resolutions-Radiometric-Spatial-Spectral-and-Temporal.html>]

Therefore, the satellite imaging systems can be classified into:

- Optical imaging systems (include visible, near infrared, and shortwave infrared systems)
- Thermal imaging systems
- Synthetic aperture radar (SAR) imaging systems.

I.8.1.1 Optical/thermal imaging systems

Can be classified according to the number of spectral bands used:

- Monospectral or panchromatic (single wavelength band, "black-and-white", grey-scale image) systems
- Multispectral (several spectral bands) systems
- Hyperspectral (hundreds of spectral bands) systems

I.8.1.2 Synthetic aperture radar imaging systems

Radiometric resolution, usually measured in bits (binary digits), is the range of available brightness values, which in the image correspond to the maximum range of DN's.

Example :

An image with 8 bit resolution has 256 levels of brightness.

Therefore, the imaging systems can be classified into according to the frequency bands, e.g.:

- Single frequency (L-band, or C-band, or X-band)
- Multiple frequency (Combination of two or more frequency bands)

I.8.2 Spatial resolution

Spatial resolution is a measure of the smallest object, i.e., the size of the ground area, usually measured in pixel size, that can be covered by the sensor.



Figure. I.17. Spatial resolution.

[\[https://www.onestopgis.com/Aerial-Photography/Digital-Imaging/Digital-Image/2-Sensor-Resolutions-Radiometric-Spatial-Spectral-and-Temporal.html\]](https://www.onestopgis.com/Aerial-Photography/Digital-Imaging/Digital-Image/2-Sensor-Resolutions-Radiometric-Spatial-Spectral-and-Temporal.html)

According to the spatial resolution, the satellite imaging systems can be classified into (see **Figure. I.17.**):

- Low resolution systems (approx. 1 km or more)
- Medium resolution systems (approx. 100 m to 1 km)
- High resolution systems (approx. 5 m to 100 m)
- Very high resolution systems (approx. 5 m or less)

Examples:

Spatial resolution	Sensor Systems Name
Low resolution	<ul style="list-style-type: none"> • Geostationary Satellites • Polar Orbiting Meteorological Satellites (NOAA-AVHRR, DMSP-OLS) • Orbview2-SeaWiFs • SPOT4-Vegetation • ADEOS-OCTS
Medium resolution	<ul style="list-style-type: none"> • TERRA-MODIS • ENVISAT-MERIS • ADEOS2-GLI
High resolution	<ul style="list-style-type: none"> • LANDSAT • SPOT 1, 2, 4 • MOS • EO1 • IRS • RESURS
Very high resolution	<ul style="list-style-type: none"> • IKONOS2 • EROS-A1 • Quickbird2 • Orbview3 • SPOT5

Table. I.3. Remote sensing satellite sensors resolutions.**I.8.3 The coverage area and the temporal coverage**

The coverage area refers to how frequent a given location on the earth surface can be imaged by the imaging system (see **Figure. I.18.**). On the other hand, the temporal coverage for satellites sensors, called the temporal resolution, refers to the time required for revisiting the same area of the Earth.

**Figure. I.18. Temporal resolution (orbital period).**

[<https://www.onestopgis.com/Aerial-Photography/Digital-Imaging/Digital-Image/2-Sensor-Resolutions-Radiometric-Spatial-Spectral-and-Temporal.html>]

I.9 Examples of Remote sensing satellites

I.9.1 Landsat Satellite

Landsat is a set of multispectral satellites developed by the NASA (National Aeronautics and Space Administration of USA), since the early 1970's (see **Figure. I.19.**). Landsat images are commonly used for environmental research. The resolutions of Landsat 4 and Landsat 5 sensors are reported in the following table. Landsat temporal resolution is 16 days.

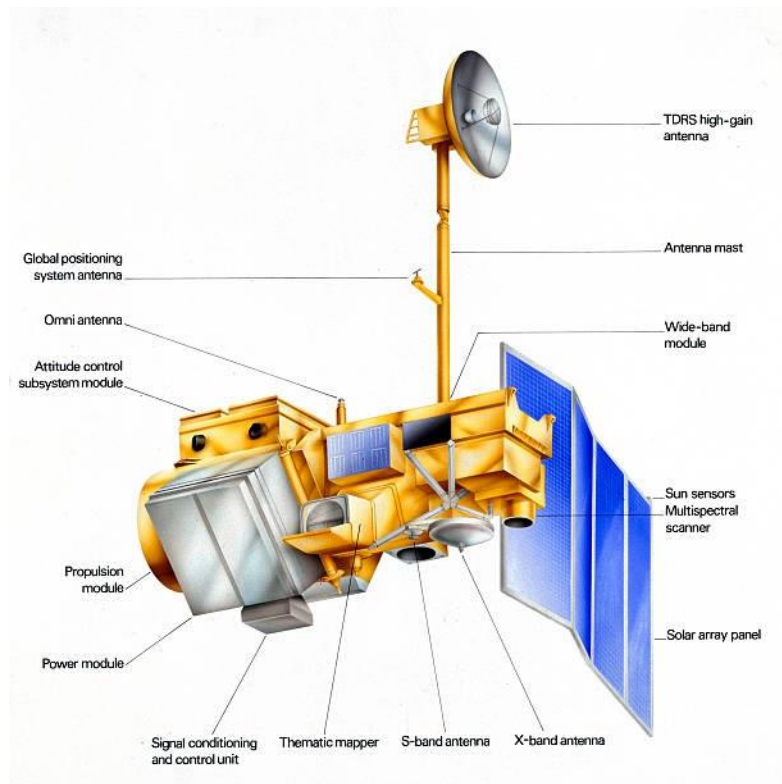


Figure. I.19. LANDSAT 5 satellite.

[<https://eo.belspo.be/en/satellites-and-sensors/landsat-5>]

Landsat 4, Landsat 5 Bands	Wavelength (micrometers)	Resolutions (meters)
Band 1 - Blue	0.45 - 0.52	30
Band 2 - Green	0.52 - 0.60	30
Band 3 - Red	0.63 - 0.69	30
Band 4 - Near Infrared (NIR)	0.76 - 0.90	30
Band 5 - SWIR	1.55 - 1.75	30
Band 6 - Thermal Infrared	10.40 - 12.50	120 (resampled to 30)
Band 7 - SWIR	2.08 - 2.35	30

Table. I.4. Landsat 4 and Landsat 5 satellite sensors characteristics.

Landsat 7 Bands	Wavelength (micrometers)	Resolutions (meters)
Band 1 - Blue	0.45 - 0.52	30
Band 2 - Green	0.52 - 0.60	30
Band 3 - Red	0.63 - 0.69	30
Band 4 - Near Infrared (NIR)	0.77 - 0.90	30
Band 5 - SWIR	1.57 - 1.75	30
Band 6 - Thermal Infrared	10.40 - 12.50	60 (resampled to 30)
Band 7 - SWIR	2.09 - 2.35	30
Band 8 - Panchromatic	0.52 - 0.90	15

Table. I.5. Landsat 7 satellite sensor characteristics.

Landsat 8 Bands	Wavelength (micrometers)	Resolutions (meters)
Band 1 - Coastal aerosol	0.43 - 0.45	30
Band 2 - Blue	0.45 - 0.51	30
Band 3 - Green	0.53 - 0.59	30
Band 4 - Red	0.64 - 0.67	30
Band 5 - Near Infrared (NIR)	0.85 - 0.88	30
Band 6 - SWIR 1	1.57 - 1.65	30
Band 7 - SWIR 2	2.11 - 2.29	30
Band 8 - Panchromatic	0.50 - 0.68	15
Band 9 - Cirrus	1.36 - 1.38	30
Band 10 - Thermal Infrared (TIRS) 1	10.60 - 11.19	100 (resampled to 30)
Band 11 - Thermal Infrared (TIRS) 2	11.50 - 12.51	100 (resampled to 30)

Table. I.6. Landsat 8 satellite sensor characteristics.

I.9.2 Sentinel-2 Satellite

Sentinel-2 is a multispectral satellite developed by the European Space Agency (ESA) in the frame of Copernicus land monitoring services (see **Figure. I.20.**). Sentinel-2 acquires 13 spectral bands as illustrated in the following table.

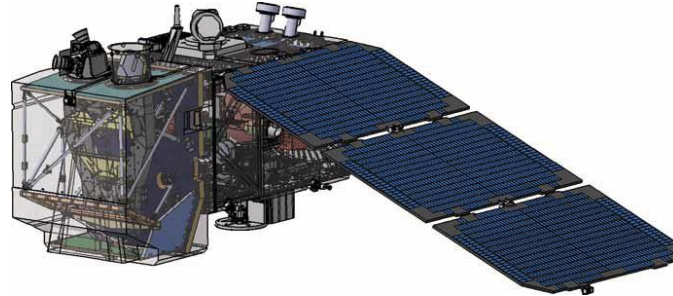


Figure. I.20. Sentinel-2 satellite.

[https://www.researchgate.net/figure/Sentinel-2-satellite-3_fig1_334432047]

Sentinel-2 Bands	Wavelength (micrometers)	Resolutions (meters)
Band 1 - Coastal aerosol	0.443	60
Band 2 - Blue	0.490	10
Band 3 - Green	0.560	10
Band 4 - Red	0.665	10
Band 5 - Vegetation Red Edge	0.705	20
Band 6 - Vegetation Red Edge	0.740	20
Band 7 - Vegetation Red Edge	0.783	20
Band 8 - Near Infrared (NIR)	0.842	10
Band 8A - Vegetation Red Edge	0.865	20
Band 9 - Water vapour	0.945	60
Band 10 - SWIR - Cirrus	1.375	60
Band 11 - SWIR	1.610	20
Band 12 - SWIR	2.190	20

Table. I.7. Sentinel-2 satellite sensor characteristics.

I.9.3 ASTER Satellite

The ASTER (Advanced Spaceborne Thermal Emission and Reflection Radiometer) satellite was launched in 1999 by a collaboration between the Japanese Ministry of International Trade and Industry (MITI) and the NASA (see **Figure. I.21.**). ASTER bands are illustrated in the following table.

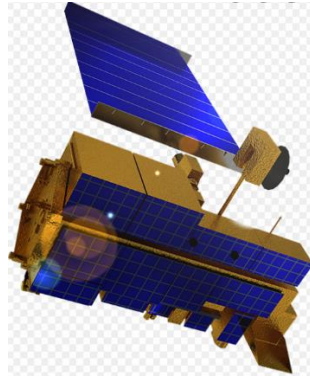


Figure. I.21. ASTER satellite.

[<https://www.jpl.nasa.gov/missions/advanced-spaceborne-thermal-emission-and-reflection-radiometer-aster>]

ASTER Bands	Wavelength (micrometers)	Resolutions (meters)
Band 1- Green	0.52 - 0.60	15
Band 2- Red	0.63 - 0.69	15
Band 3N- Near Infrared (NIR)	0.78 - 0.86	15
Band 4- SWIR 1	1.60 - 1.70	30
Band 5- SWIR 2	2.145 - 2.185	30
Band 6- SWIR 3	2.185 - 2.225	30
Band 7- SWIR 4	2.235 - 2.285	30
Band 8 - SWIR 5	2.295 - 2.365	30
Band 9 - SWIR 6	2.360 - 2.430	30
Band 10 - TIR 1	8.125 - 8.475	90
Band 10 - TIR 2	8.475 - 8.825	90
Band 11 - TIR 3	8.925 - 9.275	90
Band 12 - TIR 4	10.25 - 10.95	90
Band 13 - TIR 5	10.95 - 11.65	90

Table. I.8. ASTER satellite sensor characteristics.

I.9.4 MODIS Products

The MODIS (Moderate Resolution Imaging Spectroradiometer) is an instrument operating on the Terra and Aqua satellites launched by NASA in 1999 and 2002 respectively (see **Figure. I.22.**). Its temporal resolutions allows for viewing the entire Earth surface every one to two days.

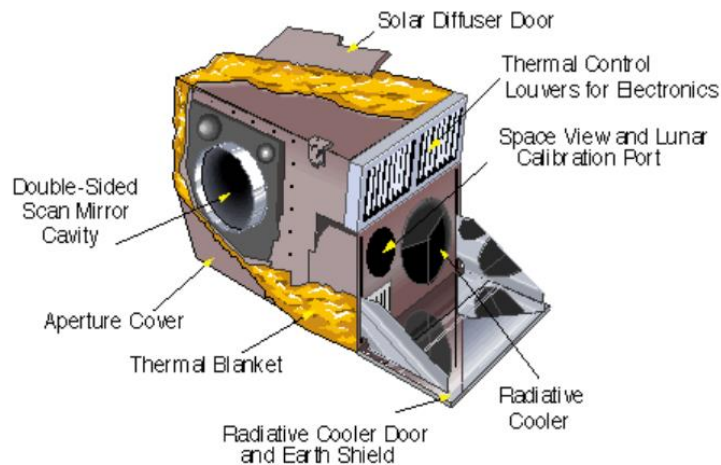


Figure. I.22. MODIS satellite.

[\[https://fr.wikipedia.org/wiki/Aqua_\(satellite\)\]](https://fr.wikipedia.org/wiki/Aqua_(satellite))

MODIS Bands	Wavelength (micrometers)	Resolutions (meters)
Band 1 - Red	0.62 - 0.67	250 - 500
Band 2 - Near Infrared (NIR)	0.841 - 0.876	250 - 500
Band 3 - Blue	0.459 - 0.479	500
Band 4 - Green	0.545 - 0.565	500
Band 5 - SWIR 1	1.230 - 1.250	500
Band 6 - SWIR 2	1.628 - 1.652	500
Band 7 - SWIR 3	2.105 - 2.155	500

Table. I.9. Remote sensing MODIS satellite sensor characteristics.

I.10 Suggested Reading

- Khorram, S., Koch, F. H., van der Wiele, C. F., & Nelson, S. A. (2012). Remote sensing. Springer Science & Business Media.
- Joseph, G. (2005). Fundamentals of remote sensing. Universities Press.
- Schanda, E. (2012). Physical fundamentals of remote sensing. Springer Science & Business Media.
- Schott, J. R. (2009). Fundamentals of polarimetric remote sensing (Vol. 81). SPIE press.
- Shaw, G. A., & Burke, H. K. (2003). Spectral imaging for remote sensing. Lincoln laboratory journal, 14(1), 3-28.
- Schott, J. R. (2007). Remote sensing: the image chain approach. Oxford University Press on Demand.
- Cracknell, A. P. (2007). Introduction to remote sensing. CRC press.
- Campbell, J. B., & Wynne, R. H. (2011). Introduction to remote sensing. Guilford Press.
- Aggarwal, S. (2004). Principles of remote sensing. Satellite remote sensing and GIS applications in agricultural meteorology, 23(2), 23-28.
- Barrett, E. C. (2013). Introduction to environmental remote sensing. Routledge.
- Gibson, P. J., Power, C. H., & Keating, J. (2013). Introductory remote sensing: Principles and concepts. Routledge.
- Asra, G. (1989). Theory and applications of optical remote sensing.
- DOMENICO. SOLIMINI. (2018). UNDERSTANDING EARTH OBSERVATION: The Electromagnetic Foundation of Remote Sensing. SPRINGER.

II. Chapter II : Aerial and Satellite Images

II.1 Remotely sensed image

A digital remotely sensed image is a two-dimensional array composed of picture elements (pixels) arranged in columns and rows. Remote sensing data is converting of spectral reflectance value to digital number (DN) known as a pixel arranged in columns and rows (see **Figure. II.1.**).

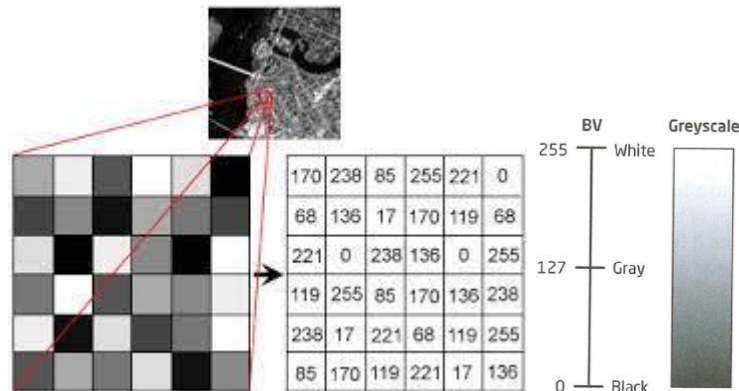


Figure. II.1. Structure of Remote Sensed Image.

[http://sar.kangwon.ac.kr/etc/fundam/chapter1/chapter1_7_e.html]

Each spectral wavelength represents as a single layer in remote sensing data called “Band” or “Channel”. The more bands or channels present, the more spectral properties in remote sensing data.

II.2 Pixels

Pixels are smallest units of an image. A pixel has an intensity value and a location address in the two dimensional image. Associated with each pixel is a number known as Brightness Value (BV), that depicts the average radiance of a relatively small area within a scene (see **Figure. II.1.**). A smaller number indicates low average radiance from the area and the high number is an indicator of high radiant properties of the area.

The size of this area effects the reproduction of details within the scene (see **Figure. II.2.**). As pixel size is reduced more scene detail is presented in digital representation.

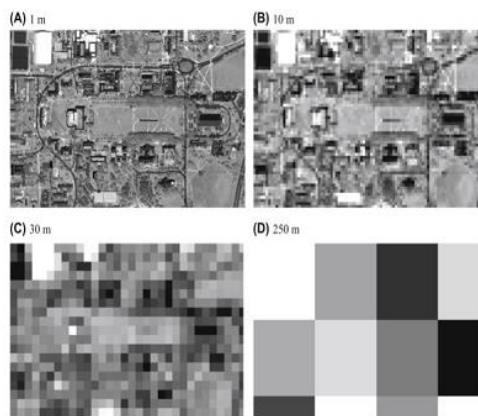


Figure. II.2. Pixel size and details level on the scene.

[<https://www.sciencedirect.com/topics/earth-and-planetary-sciences/spatial-resolution>]

II.3 Characteristics of Remotely sensed images

Remotely sensed data are images representing a parts of the land surface under study obtained at a distance through sensors mounted on aerial or satellite platforms. Remotely sensed images are valuable sources of spatial data for many reasons, including:

- **Large-area coverage**

Images capture data from large areas at a relatively low cost and in a uniform manner.

- **Extended spectral range**

Aerial and satellite scanners are sensitive to broader spectral ranges, up to thermal wavelengths and beyond. This expanded spectral range allows us to detect features or phenomena that appear invisible to the human eye.

- **Geometric accuracy**

Remotely sensed data may be converted to geometrically accurate spatial data. Distortion removal methods provide highly accurate spatial data from images. These systems are combined with techniques for identifying and removing most of the spatial error in aerial or satellite images, so spatially accurate data may be collected from images.

- **Permanent record**

An image is fixed in time, so the conditions at the time of the photograph may be analyzed many years hence. Comparison of conditions over multiple dates, or determination of conditions at a specific date in the past are often quite valuable, and remotely sensed images are often the most accurate source of historical information.

II.4 Types of Remotely sensed images

Two types of remote sensing images can be distinguished (see **Figure. II.3.**):

- Aerial photography ;
- Satellite imagery.



Figure. II.3. Aerial and Satellite images.

[<https://blog.hxgncontent.com/which-imagery-is-better-aerial-or-satellite/>]

II.4.1 Aerial photography

Aerial photography is widely used in the early remote sensing applications. Airplanes and helicopters are the most platforms for the hardware used to take aerial photographs. Aerial photography can be active or passive. Digital aerial cameras normally operate in four wave bands, blue, green, red and near infrared.

It is appropriate to use aerial photography when :

- The area of interest is small or relatively small,
- The area of interest is heterogeneous,
- Objects of interest are tiny or the mapping units small,
- The objects of interest can easily be identified in the visible wavelengths,
- When stereo-pairs and 3D interpretation will improve the results.

a. Advantage

- The interpretation of photographs is quite easy and intuitive, since the objects look familiar even to the non-experienced interpreter.

b. Disadvantages

- Photographic remote sensing systems reproduce an average image of the reflected energy from a surface without considering the differences that might occur in reflectance in different wavelengths bands. Thus, many objects are impossible to separate when studying only the average reflection.
- A source of potential error in an aerial photograph is relief displacement. This error is frequently seen with trees and multistory buildings and worsens with increasingly taller features.

II.4.2 Satellite imagery :

Satellite images are images of Earth collected by sensors that are mounted satellite orbiting the earth. It is appropriate to use satellite imagery when :

- The area of interest is large ;
- Repetitive imaging activity survey.

a. Advantages

- Large area coverage;
- Frequent and repetitive coverage of an area of interest;
- Quantitative measurement of ground features using radiometrically calibrated sensors;
- Semiautomated computerised processing and analysis;
- Relatively lower cost per unit area of coverage.

b. Disadvantage

- Satellite imagery are often of a lower spatial resolution compared to aerial photography.

However, very high resolution imagery (up to 1-m resolution) is now commercially available to civilian users with the successful launch of the IKONOS-2 satellite.

II.4.3 Differences between Aerial photography and Remote sensing imagery :

	Aerial photography	Remote sensing imagery
Distance	<ul style="list-style-type: none"> • Taken from an altitude of a few hundred meters to thousand meters. • Covers a smaller area of a few hundred square kilometers. 	<ul style="list-style-type: none"> • Captured from 600-1000km. • Covers a large area ranging from 3500 to above 30000 square kilometers.
Types of data	<ul style="list-style-type: none"> • Aircraft are mounted with several different cameras or sensors. • Capture standard imagery, radar, and color infrared images. • It is easier to change the sensors, thus allowing the aerial acquisition to keep ahead of the latest advancements in technology. 	<ul style="list-style-type: none"> • Collect various data, including; color infrared, thermal, radar data, and standard photographic imagery. • With technology improvements, it is challenging to change the sensors and cameras in a satellite.
Weather conditions effects	<ul style="list-style-type: none"> • Surveys are adversely affected by the weather. 	<ul style="list-style-type: none"> • Surveys are not constrained by weather. • Clouds may conceal some information available on NIR bands.
Level of detail	<ul style="list-style-type: none"> • Aerial photography snapshots are taken by cameras and photographic films from an altitude of a few thousand meters. • The photographs have a very high degree of detail. 	<ul style="list-style-type: none"> • Satellite images are taken from a distance of about 900km above the Earth's surface. • The photos are taken digitally, which can be further improved or enhanced. • The degree of detail is restricted to pixel

		resolutions of the sensors.
Speed	<ul style="list-style-type: none"> • Used to be a slow and time-consuming process. • The size and shape of a geographical area to be captured determined the amount of time taken. • Using airplanes to fly back and forth led to a series of overlapping photographs being taken. 	<ul style="list-style-type: none"> • Collecting large amounts of data in a relatively limited time frame. • The sizes of the pictures allow a complete site to be captured in a small time frame and using fewer images.
Location	<ul style="list-style-type: none"> • There is delayed surveys and image attainment depending on the location of the study. • The surveying team has to be in the study area to ensure a weather window is not missed. 	<ul style="list-style-type: none"> • Satellite imagery of a particular location in the world can easily be obtained once a satellite is positioned. • There is no need to cross different countries' borders or go through government protocols that could delay the attainment of the images.
Resolution	<ul style="list-style-type: none"> • The high resolution on the ground permits the identification and mapping of very small objects, and gives them an obvious advantage over satellite imagery for local surveys. 	
	<ul style="list-style-type: none"> • Collects data over a broad range of wavelengths and sensors are normally tuned to collect data from only a limited wavelength range. 	

Table. II.1. Differences between Aerial photography and Remote sensing imagery.

II.5 Resolution and Sampling in Remotely Sensed Data

The quality and quantity of satellite imagery is largely determined by their resolution. It determine the level of details of the modeling process. There are four types of resolution that characterize any particular remote sensor :

- Spectral resolution ;
- Radiometric resolution ;
- Spatial resolution ;
- Temporal resolution.

II.5.1 The spatial resolution

Spatial resolution refers to the size of the pixels representing the ground coverage in the image. If a satellite produces imagery with a 10 m resolution, the corresponding ground coverage for each of those pixels is 10 m by 10 m, or 100 square meters on the ground. The detail discernible in an image is dependent on the spatial resolution of the sensor (see **Figure. II.4.**).

Satellite	Spatial Resolution
Landsat 8	30m
MODIS (Terra + Aqua)	250m, 500m, 1000m
VIIRS	375m
AVHRR	1100m
Sentinel-2	10m, 20m, 60m
SPOT-7	1.5, 6m
QuichBird	67cm
Ikonos	0.8m, 3.2m

Table. II.2. Example of remote sensing satellite sensor spatial resolutions.

We distinguished two spatial resolution levels:

a. High Resolution image (smaller pixels)

Refers to one with a small resolution size. Fine details can be seen in a high resolution image.

b. Low Resolution image (large pixels)

Refers to one with a large resolution size. Only coarse features can be observed in the image.

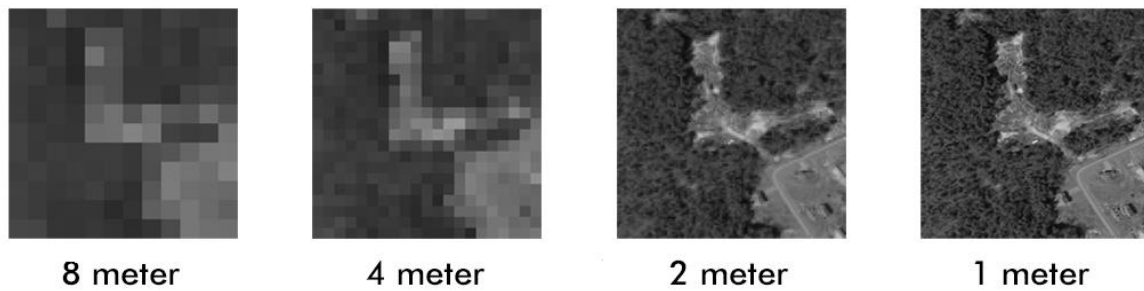


Figure. II.4. Satellite image with different Spatial resolutions.

[<https://www.neonscience.org/resources/learning-hub/tutorials/raster-res-extent-pixels-r>]

II.5.1.1 Spectral resolution :

The spectral resolution refers to the interval size of the wavelengths and the number of intervals being scanned, also called bands. Multispectral and hyperspectral sensors are those sensors that can cover a multitude of wavelength intervals within the spectrum.

Satellite	Spectral Resolution
Landsat 8	11 bands
MODIS (Terra + Aqua)	36 bands
VIIRS	22 bands
AVHRR	6 bands
Sentinel-2	12 bands
SPOT-7	5 bands
QuichBird	4 bands
Ikonos	4 bands

Table. II.3. Example of remote sensing satellite sensor spectral resolutions.

II.5.1.2 Temporal resolution :

The temporal resolution refers to the amount of time between each image collection period and is determined by the repeat cycle of the satellite's orbit. It is the length of time it takes for a satellite to complete one entire orbit cycle. The more frequently it is captured, the better or finer the temporal resolution is said to be.

We distinguished three temporal resolution levels :

- High temporal resolution: < 24 hours - 3 days
- Medium temporal resolution: 4 - 16 days
- Low temporal resolution: > 16 days

Satellite	Temporal Resolution
Landsat 8	16 days
MODIS (Terra + Aqua)	16 days
VIIRS	1 day
AVHRR	2 days
Sentinel-2	5 days
SPOT-7	26 days
QuichBird	1-4 days
Ikonos	3 days

Table. II.4. Example of remote sensing satellite sensor temporal resolutions.

II.5.1.3 The radiometric resolution

The radiometric resolution refers to the sensitivity of the sensor to variations in brightness. Specifically, it denotes the number of grayscale levels that can be imaged by the sensor. The finer the radiometric resolution of a sensor, the more sensitive it is to detecting small differences in reflected or emitted energy (see **Figure. II.5.**).



Figure. II.5. Satellite image with different Radiometric resolutions.

[<https://gisgeography.com/bit-depth/>]

Typically, the available radiometric values for a sensor are :

- 8-bit (yielding values that range from 0–255 as 256 unique values or as 28 values);
- 11-bit (0–2,047);
- 12-bit (0–4,095);
- 16-bit (0–63,535).

Example :

Landsat-7 and Landsat TM 8 bits maintain 8-bit resolution for its bands and can therefore record values for each pixel that range from 0 to 255.

II.5.1.4 Choosing Resolution

There is a trade-off between the different types of resolution. Improving one type of resolution often necessitates a reduction in one of the other types of resolution. A high spatial resolution tends to be accompanied by a low temporal resolution and vice versa. An increase in spatial resolution is typically associated with a decrease in spectral resolution, and vice versa. For example, Landsat 8 has a spatial resolution of 30 m and a temporal resolution of 16 days, while MODIS has a spatial resolution of 250 m to 1 km and a temporal resolution of 1 to 2 days

It is important to pick the most useful resolutions for a specific project. High spatial resolutions are useful for small study areas or examining an area in fine detail. High temporal resolutions are useful in dynamic, frequently changing environments and areas with high levels of cloud cover

II.6 Spectral satellite imaging

The satellites cover different portions of the electromagnetic spectrum and record the incoming radiations at different spectral resolutions. Most of these sensors operate in three modes (see **Figure. II.6.**):

- Panchromatic mode ;
- Multispectral mode ;
- Hyperspectral mode.



Figure. II.6. Multi spectral and panchromatic images.

[https://www.researchgate.net/figure/Multispectral-and-Panchromatic-Images-a-MS-Image-of-1st-Set-b-PAN-Image-of-1st-Set_fig4_330493532]

II.6.1 The panchromatic mode :

A panchromatic image corresponds to only one spectral band displayed as a greyscale image, representing the brightness intensity of different pixels that compose the image. The Radiometric information is the main information type utilized in the interpretation of the panchromatic image.

II.6.2 The multispectral (color) mode :

A multi-spectral image is a collection of several monochrome images of the same scene, each of them acquired at a particular wavelength measured by a sensor. Each image is referred to as a band. Bands represent ranges of the electromagnetic spectrum including the acquisition of visible, near infrared, ultra-violet, and short-wave infrared images in several broad wavelength bands. Multi-spectral images are most commonly used for remote sensing applications such as discrimination of land surface features and landscape patterns.

Example

An example of a multispectral sensor is Landsat-8. For example, Landsat-8 produces 11 images with the following bands:

- COASTAL AEROSOL in band 1 (0.43-0.45 μm)
- BLUE in band 2 (0.45-0.51 μm)
- GREEN in band 3 (0.53-0.59 μm)
- RED in band 4 (0.64-0.67 μm)
- NEAR INFRARED (NIR) in band 5 (0.85-0.88 μm)
- SHORT-WAVE INFRARED (SWIR 1) in band 6 (1.57-1.65 μm)
- SHORT-WAVE INFRARED (SWIR 2) in band 7 (2.11-2.29 μm)
- PANCHROMATIC in band 8 (0.50-0.68 μm)
- CIRRUS in band 9 (1.36-1.38 μm)
- THERMAL INFRARED (TIRS 1) in band 10 (10.60-11.19 μm)
- THERMAL INFRARED (TIRS 2) in band 11 (11.50-12.51 μm)

II.6.3 Hyperspectral Imaging

Hyperspectral image is composed of hundreds of contiguous spectral band. Hyperspectral imagery allows detection, identification and quantification of surface materials, as well as inferring biological and chemical processes. Remote sensing applications using hyperspectral images include precision agriculture, e.g., monitoring the types, health, moisture status and maturity of crops.

Example :

The MODIS sensor consists of 36 spectral bands, covering the wavelength regions ranging from the visible, near infrared, short-wave infrared to the thermal infrared. This enabling the finer spectral characteristics of the targets to be captured by the sensor.

II.6.4 Difference between multispectral and hyperspectral

The main difference between multispectral and hyperspectral is the **number of bands** and **how narrow the bands are** (see **Figure. II.7.**).

Multispectral imagery generally refers to **3 to 10 bands**. Each band has a descriptive title.

Hyperspectral imagery consists of much narrower bands (10-20 nm). A hyperspectral image could have **hundreds or thousands of bands**. In general, they don't have descriptive channel names.

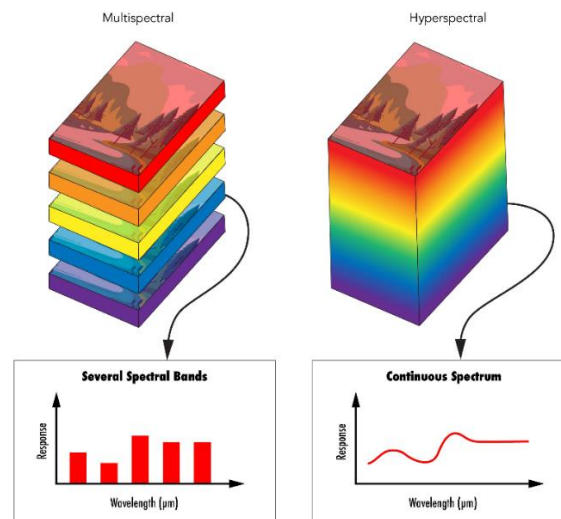


Figure. II.7. Comparison between multispectral and hyperspectral images.

[<https://www.edmundoptics.com/knowledge-center/application-notes/imaging/hyperspectral-and-multispectral-imaging/>]

II.7 Color Composites

Colour Composite Images is remote sensing images, which are displayed in three primary colours (red, green and blue). It is the assignment of three primary colors; red (R), green (G) and blue (B) to three selected bands from multispectral bands. When these three primary colours are combined in various proportions, they produce different colours in the visible spectrum (see **Figure. II.8.**).

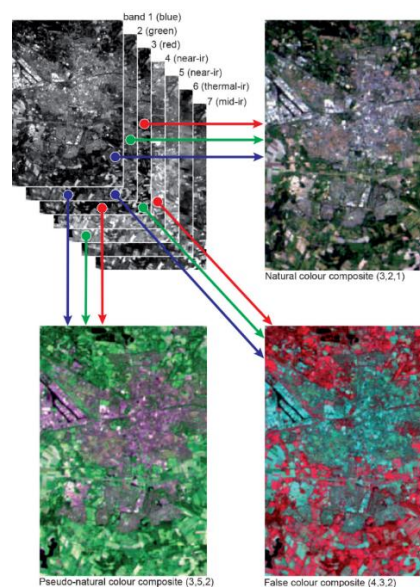


Figure. II.8. Landsat-5 TM three different colour composites : true colour, pseudo-natural colour and false colour composites. [<https://lth.itc.utwente.nl/509/concept/88760>]

II.7.1 Natural or True Color Composites

A natural or true color composite is an image resulted from the combination of visible red, green and blue bands to the corresponding red, green and blue channels on the computer. In the resulting composite image, vegetation appears green, water dark is blue to black and bare ground and impervious surfaces appear light grey and brown.

a. Advantage

- Colors appear natural to our eyes.

b. Disadvantages

- Subtle differences in features are difficult to recognize.
- Natural color images can be low in contrast and somewhat hazy.

II.7.2 False Color Composites

A false color image is used to enhance features otherwise invisible or poorly visible to a human eye. That is to say, a false color composite is a multispectral image interpretation using the standard visual RGB band range (red, green, and blue). Depending on the type of objects that need to be emphasized in the image, different color combinations can be used to produce the false color imagery.

Examples :

There are many different false colored composites which can highlight many different features. **Table. II.5.** shows several color compositions and their characteristics.

False color composites (band combination)	Interpretation
Near infrared (red), green (blue), red (green).	Observing changes in plant health.
Shortwave infrared (red), near infrared (green), and green (blue).	Show floods or newly burned land, often.
Blue (red), two different shortwave infrared bands (green and blue).	Differentiate between snow, ice, and clouds.
SWIR-2, SWIR-1, Red (NIR, Red, Green)	Enhances a variety of objects in the image : <ul style="list-style-type: none"> • Water bodies are blue or black which makes coastlines appear more distinct. • Snow and ice are more easily discernible as their dark blue color stands out. • Urbanized areas can appear white, gray, or purple, providing contrast with the dark green vegetation.

SWIR, NIR, Red	Highlights the presence of vegetation, clear-cut areas and bare soils, active fires, and smoke; in a false color image. Monitor forest fires and volcanic activity, and other similar phenomena.
Thermal infrared.	Shown in tones of gray to illustrate temperature.

Table. II.5. Example of band combinations and their applications

II.7.2.1 Vegetation Indices

Different bands of a multispectral image may be combined to accentuate the vegetated areas.

a. Ratio Vegetation Index (RVI)

One such combination is the ratio of the near-infrared band to the red band (see **Figure. II.9.**). This ratio is known as the Ratio Vegetation Index (RVI)

$$\text{RVI} = \text{NIR}/\text{Red}$$

Since vegetation has high NIR reflectance but low red reflectance, vegetated areas will have higher RVI values compared to non-vegetated areas.

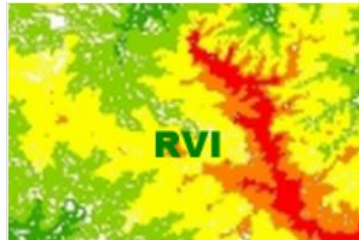


Figure. II.9. Example of RVI image.

[<https://www.arcgis.com/home/item.html?id=bf818b4f3bdb4acba0cb6a9bc74fc78e>]

b. Normalised Difference Vegetation Index (NDVI)

Another commonly used vegetation index is the Normalised Difference Vegetation Index (NDVI) (see **Figure. II.10.**) computed by

$$\text{NDVI} = (\text{NIR} - \text{Red})/(\text{NIR} + \text{Red})$$

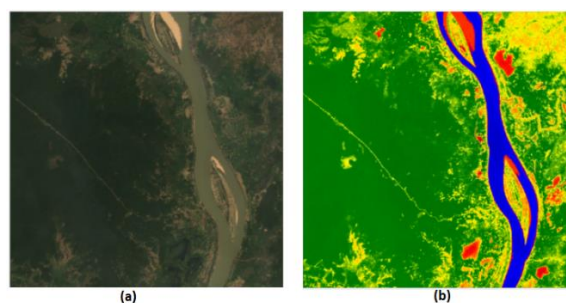


Figure. II.10. Landsat image and the corresponding NDVI image.

[<https://mygeoblog.com/2019/04/29/cambodia-1-mapping-vegetation-using-landsat/>]

II.7.3 Pseudo-natural colour composites

Combinations that display NIR as green show vegetation in a green colour and are, therefore, often called **pseudo-natural colour composites**.

II.8 Image fusion

As previously said, there are two types of images recorded on a satellite: panchromatic images and multispectral images. Panchromatic images are characterized by a high spatial resolution for distinguishing features, for e.g. in IRS -1C, PAN has a spatial resolution of 5.8 m whereas in the case of LISS it is 23.5 m, while multispectral images have high spectral resolution. Many applications require images with both high spatial and high spectral resolutions. Image Fusion is the combination of low resolution multispectral and high-resolution panchromatic images to form a new high-resolution multispectral images. The objective is to improve the accuracy of image interpretation and analysis by making use of complementary information.

The commonly applied Image fusion techniques are :

- Intensity Hue Saturation (IHS) Transformation
- The Hue Saturation Value (HSV)
- Principal Component Analysis (PCA)
- Brovey Transform
- Band Substitution

II.8.1 IHS Transformation

The IHS transformation is very useful for image processing because it allows merging high spatial resolution panchromatic image with lower spatial resolution hyper spectral image. Thus, the resulted transformed image shows the spatial details of the panchromatic image while maintaining much of the spectral content of the original color image (see **Figure. II.11.**).

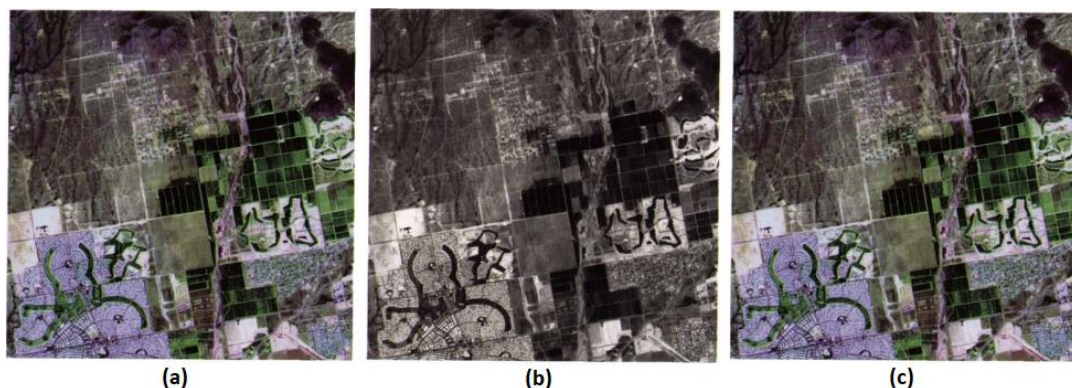


Figure. II.11. IHS image transformation : (a) Landsat TM falsecolor composite image of TM bands 1 (displayed in blue), 3 (displayed in red), and 4 (displayed in green). (b) SPOT panchromatic image. (c) Landsat TM and SPOT panchromatic images IHS-merged.

II.8.2 The HSV

HSV method is one of the most commonly used technique for remote sensing image fusion. HSV improve the spatial resolution for the original multispectral image by preserving the spectral information characteristics. The HSV method consists of transforming the R, G and B bands of the multispectral image into HSV components (see **Figure. II.12.**).

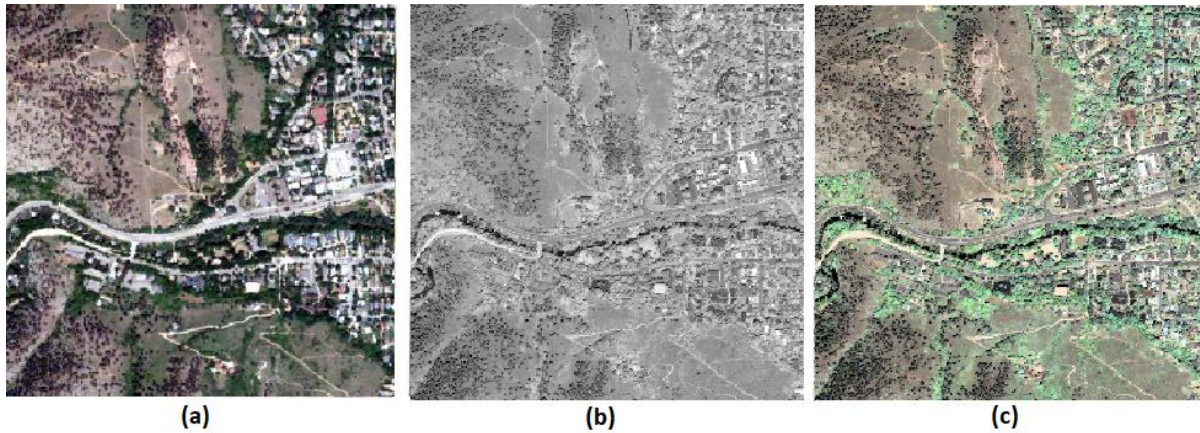


Figure. II.12. HSV image fusion : (a) QuickBird multi spectral image. (b) QuickBird panchromatic image. (c) HSV image fusion.

[<https://www.spiedigitallibrary.org/conference-proceedings-of-spie/10605/106051N/A-new-improved-HSV-image-fusion-method/10.1117/12.2291610.short>]

II.8.3 The PCA method

The PCA method is a pre-processing transformation that creates new images from the uncorrelated values of different image bands. This allows describing the data more efficiently than the original band reflectance values that are usually strongly correlated from one band to the other.

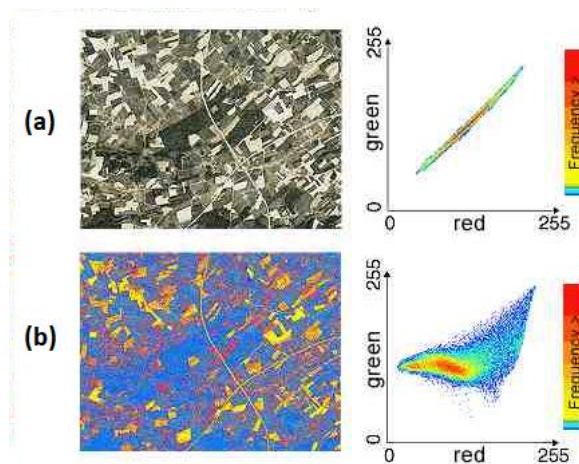


Figure. II.13. PCA image transformation : (a) The original input satellite image. (b) The reduced PCA image.

[<https://eo.belspo.be/en/principal-component-analysis>]

Principal component enhancement techniques are particularly appropriate in areas where little a priori information concerning the region is available. It involves ways for identifying and to show patterns in data, in such a way as to highlight their similarities and differences, and thus reduce dimension without loss of data.

II.8.4 Band Substitution

To highlight specific features, one or more of the RGB bands can be substituted for another, such as infrared, or near infrared, which are not visible to the human eye.

II.8.5 Brovey Transform

Brovey transform allows combining the data acquired by different sensors. It preserves the spatial information of PAN image well and optimise the visual contrast. However distortion of the spectral information is significant in this method.

II.9 Band ratioing

Band ratioing is a standard image processing technique that enhance the spectral differences between bands by reducing environmental spatial radiance variations that are proportionally constant between bands. These variations are generally attributable to terrain illumination, ground albedo, topographic slope and aspect, shadows, or seasonal changes in sunlight illumination angle and intensity. These allow best identification of surface materials or land use in a remotely sensed image. Band ratioing consists in dividing one spectral band by another and produces an image that provides relative band intensities.

II.10 Suggested Reading

- Irons, J. R., Dwyer, J. L., & Barsi, J. A. (2012). The next Landsat satellite: The Landsat data continuity mission. *Remote Sensing of Environment*, 122, 11-21.
- Emery, B., & Camps, A. (2017). *Introduction to satellite remote sensing: atmosphere, ocean, land and cryosphere applications*. Elsevier.
- Fox, L. (2015). *Essential Earth imaging for GIS*. Esri Press.
- Richards, J. A. (2009). *Remote sensing with imaging radar (Vol. 1)*. Berlin/Heidelberg, Germany: Springer.
- Chuvieco, E. (2016). *Fundamentals of satellite remote sensing: An environmental approach*. CRC press.
- Borengasser, M., Hungate, W. S., & Watkins, R. (2007). *Hyperspectral remote sensing: principles and applications*. CRC press.
- Ben-Dor, E., Schläpfer, D., Plaza, A. J., & Malthus, T. (2013). Hyperspectral remote sensing. *Airborne measurements for environmental research: Methods and instruments*, 413-456.
- Chutia, D., Bhattacharyya, D. K., Sarma, K. K., Kalita, R., & Sudhakar, S. (2016). Hyperspectral remote sensing classifications: a perspective survey. *Transactions in GIS*, 20(4), 463-490.
- Vorovencii, I. (2009). The hyperspectral sensors used in satellite and aerial remote sensing. *Bulletin of the Transilvania University of Brasov. Forestry, Wood Industry, Agricultural Food Engineering. Series II*, 2, 51.
- Roy, P. S., Behera, M. D., & Srivastav, S. K. (2017). Satellite remote sensing: sensors, applications and techniques. *Proceedings of the National Academy of Sciences, India Section A: Physical Sciences*, 87(4), 465-472.

III. Chpater III : Remote Sensing Image Processing

III.1 Image processing

Processing is a method to perform some operations on an image, in order to get an enhanced image or to extract some useful information from it. It is a type of signal processing in which input is an image and output may be image or characteristics/features associated with that image. There are several Image processing techniques used in Earth observation, and we tend to categorize them into four broad categories:

- Preprocessing ;
- Transformation ;
- Correction ;
- Classification.

III.2 Pre-processing of satellite images

Prior to data analysis, initial processing on the raw data is usually carried out to correct for any distortion due to the characteristics of the imaging system and imaging conditions. Pre-processing operations, sometimes referred to as image restoration and rectification, are intended to correct for sensor- and platform-specific radiometric and geometric distortions of data (see **Figure. III.1.**).

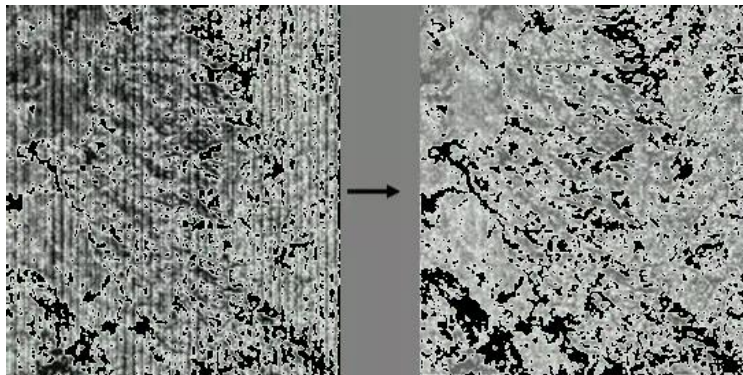


Figure. III.1. Example of preprocessing of remote sensing image.

[\[https://www.onestopgis.com/Aerial-Photography/Digital-Imaging/Digital-Image/6-Pre-Processing-Remotely-Sensed-Images.html\]](https://www.onestopgis.com/Aerial-Photography/Digital-Imaging/Digital-Image/6-Pre-Processing-Remotely-Sensed-Images.html)

Some typical pre-processing operations are :

- Radiometric Correction ;
- Atmospheric Corrections ;
- Geometric Correction.

III.2.1 Radiometric Correction

Radiometric is a pre-processing technique to reconstruct physically calibrated values by correcting the spectral distortions caused by sensor specific errors, sun angle, topography and the atmosphere condition during recording (see **Figure. III.2.**).

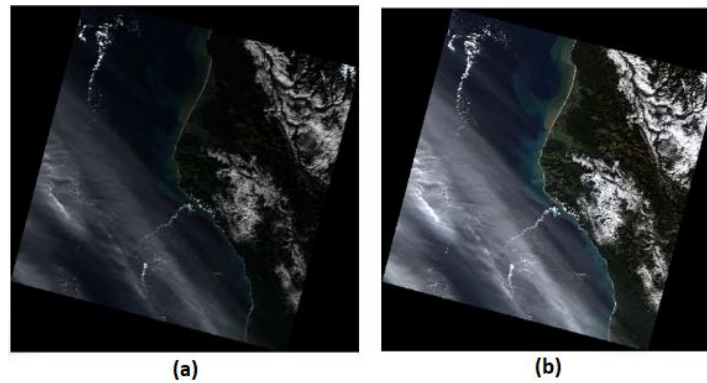


Figure. III.2. Landsat image before (a) and after (b) radiometric correction.

[\[https://slideplayer.com/slide/7946813/\]](https://slideplayer.com/slide/7946813/)

Radiometric distortions usually come from various sources including :

- Variations in scene illumination;
- Variations in viewing geometry ;
- Variations in atmospheric conditions ;
- Variations depending on the specific sensor and platform noise and response used to acquire the data;
- Image transformation to a specific map projection system.

Radiometric corrections are classified into two broad categories:

- a. Sun Angle/Topography Radiometric Corrections ;*
- b. Sensor Irregularities Radiometric Corrections.*

III.2.1.1 The Sun Angle/Topography radiometric corrections

Correct the effects of diffusion of sunlight, especially in the water surface and mountains, by estimating the shading curve.

III.2.1.2 Sensor irregularity corrections

Sensor irregularity corrections consist in removing radiometric noise from changes in sensor sensitivity or degradation of the sensor.

III.2.2 Atmospheric Corrections

Atmospheric correction is classified into two types (see **Figure. III.3.**) :

- Absolute correction ;
- Relative correction.

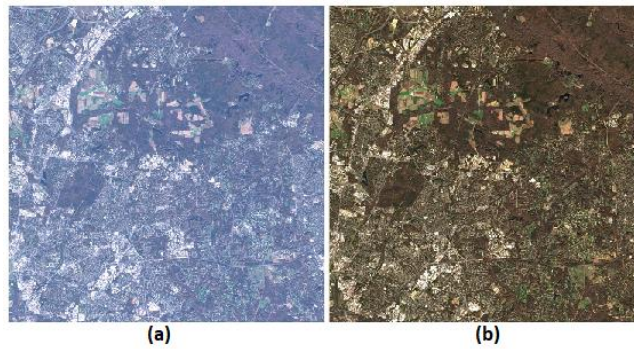


Figure. III.3. Landsat image before (a) and after (b) atmospheric correction.

[\[https://slideplayer.com/slide/7946813/\]](https://slideplayer.com/slide/7946813/)

III.2.2.1 Absolute correction

Absolute correction considers several time-dependent parameters, including solar zenith angle, the total optical depth of the aerosol, irradiance at the top of the atmosphere, and sensor viewing geometry to correct the atmospheric distortions. Therefore, the atmospheric correction is so complicated and the exact measurement of atmospheric condition is difficult.

III.2.2.2 Relative Correction

Relative correction is to normalize multi-temporal data taken on different dates in a given scene to a selected reference data at specific time.

The following are typical techniques for relative image correction.

- Adjustment of average and standard deviation values ;
- Conversion to normalized index ;
- Histogram matching ;
- Least square method.

III.2.3 Geometric correction

Geometric correction is to correct geometric errors due to the data acquisition system and to register the satellite image to a map projection (see **Figure. III.4.**). The aim is to have a pixel or a scene with the exact location or grid point on the ground with two different images taken at other times.

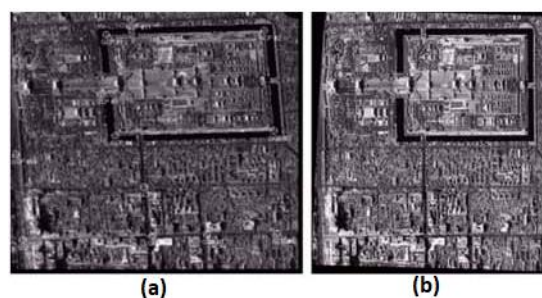


Figure. III.4. IKONOS image before (a) and after (b) geometric correction.

[\[https://a-a-r-s.org/proceeding/ACRS2000/Papers/DPH00-12.htm\]](https://a-a-r-s.org/proceeding/ACRS2000/Papers/DPH00-12.htm)

Two types of geometric distortions can be distinguished : internal and external distortions.

a. Internal distortions

Caused by sensor, such as lens distortion, misarrangement of detectors, variation of sampling rate etc.

b. External distortions

Caused by external parameters other than sensor, including variation of attitude and position of platform, earth curvature, topographic relief etc.

There are three types of geometric correction : system correction, mapping transformation, and combined method.

III.2.3.1 System correction

Geometric correction using the geometry of the sensor with sensor calibration data and attitude/positioning measurements. But this is not enough to produce geo-coded image with high accuracy.

III.2.3.2 Mapping transformation

Determination of transformation function, usually the second or third order polynomials to transform image to map coordinate system based only on ground control points.

III.2.3.3 Combined method

First, system correction is adopted to avoid major systematic distortions and then mapping transformation with simpler functions such as affine or pseudo-affine is applied.

III.3 Image Transformation

Image transformations typically involve the manipulation of multiple bands of data, whether from a single multispectral image or from two or more images of the same area acquired at different times. Two procedures of image transformation will be presented depending on the specific purposes : image enhancement and feature extraction.

III.3.1 Image Enhancement

For many remote sensing applications, the corrected image is also treated by different image enhancement techniques to improve the quality and facilitate the analysis : feature extraction and image interpretation. Remote sensing image enhancement techniques improve the visibility, contrast, intensity, and edge information of the image and removing noise while preserving the original reflectance values (see **Figure. III.5.**).

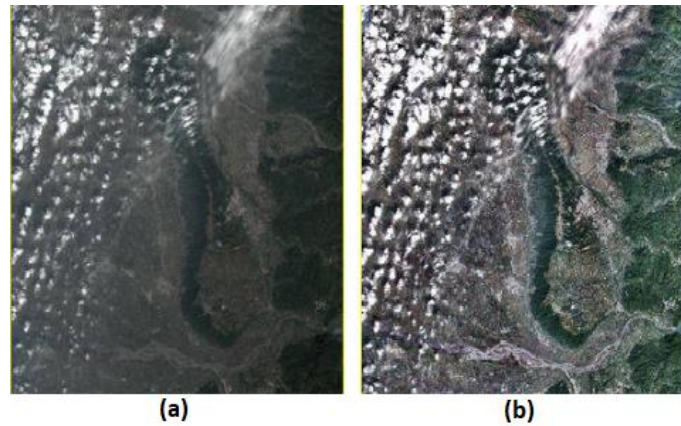


Figure. III.5. Sentinel-2 image before (a) and after (b) enhancement.

[<https://www.mdpi.com/2072-4292/12/10/1555>]

The more commonly used techniques of image enhancement are :

- Eliminating noise;
- Contrast stretch ;
- Revealing blurred details;
- Adjusting levels to highlight features of an image.
- Density slicing ;
- Edge enhancement ;
- Spatial filtering ;
- Fourier analysis ;
- Multi-image manipulation band rationing, differencing, principal components, canonical components, vegetation components, intensity-hue-saturation.

Image enhancement techniques can be divided into two broad categories:

- Spectral enhancement ;
- Spatial enhancement.

III.3.1.1 Spectral enhancement

Relies on changing the gray scale representation of pixels to give an image with more contrast for interpretation (see **Figure. III.6.**). It applies the same spectral transformation to all pixels with a given gray scale in an image.

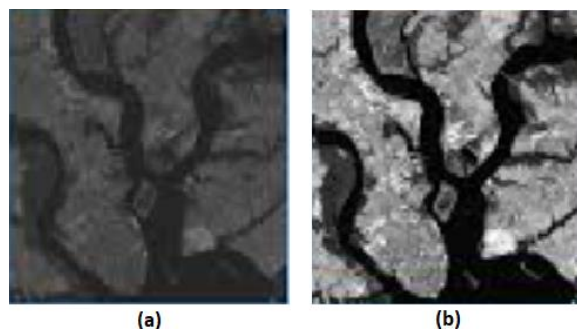


Figure. III.6. Landsat image before (a) and after (b) spectral enhancement.

[<https://www.slideserve.com/drago/remote-sensing-part-2>]

Contrast is an important characteristic generally refers to the difference in luminance or grey level values in an image, larger the range, greater the contrast, more easy it is to interpret the image, and vice versa. Satellite images require contrast improvement.

Contrast enhancement techniques, i.e., **grey level stretching**, expand the range of brightness values in an original input image to make use of the total dynamic range or sensitivity of the output device. The aim is to improve the visual contrast between two areas of different uniform densities. This increases the discrimination ability between areas initially having a small difference in density.

We distinguished two types of contrast enhancement :

- Linear Contrast Stretch ;
- Non-Linear Contrast Enhancement.

a. Linear Contrast Stretch

Linear Contrast Stretch is the simplest contrast enhancement technique which consists in expanding uniformly the intensity pixel values in the original image to exploit the total range of values (see Figure. III.7.).

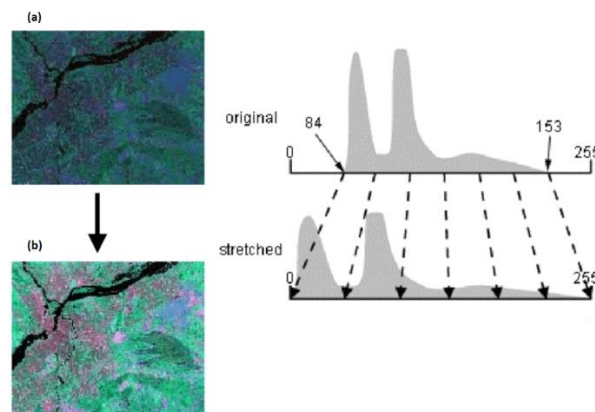


Figure. III.7. Landsat image before (a) and after (b) Linear Contrast Stretch Enhancement and their corresponding histogram.

[<https://www.slideshare.net/pabitrmani/image-enhancement-technique-digital-image-analysis-in-remote-sensing>]

b. Non-Linear Contrast Enhancement

In these methods, the input and output data values follow a non-linear transformation (see **Figure. III.8.**). The non-linear contrast enhancement techniques is useful for enhancing the colour contrast between the nearly classes and subclasses of a main class.

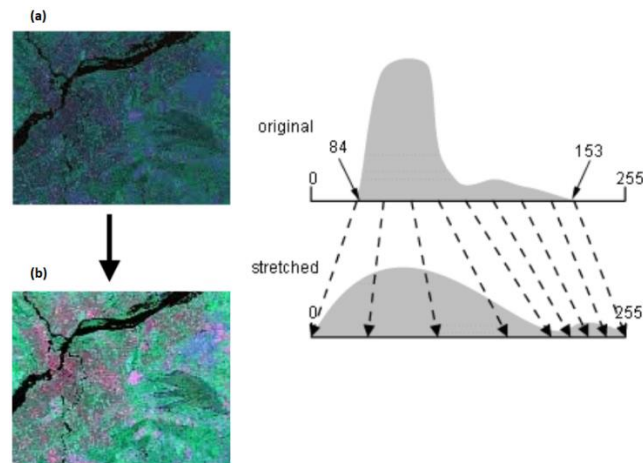


Figure. III.8. Landsat image before (a) and after (b) Non-Linear Contrast Stretch Enhancement and their corresponding histogram.

[<https://www.slideshare.net/pabitrmani/image-enhancement-technique-digital-image-analysis-in-remote-sensing>]

Three methods of non-linear contrast enhancement techniques can be distinguished:

- Histogram Equalizations (HE),
- Adaptive Histogram Equalization (AHE)
- Homomorphic Filters (HF).

III.3.1.2 Spatial enhancement

Spatial enhancement is the enhancement of the image space that divides an image into uniform pixels according to the spatial coordinates with a certain resolution (see **Figure. III.9.**). It consists in defining homogeneous regions based on linear edges. The spatial domain methods perform operations on pixels directly.

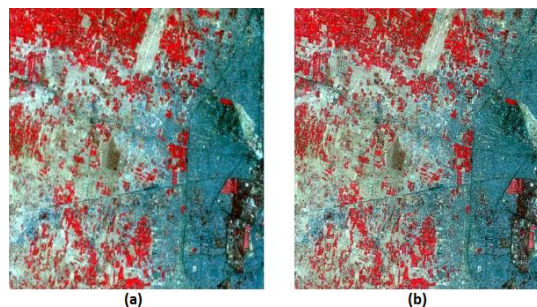


Figure. III.9. Satellite image before (a) and after (b) Spatial Enhancement.

[<https://www.gisoutlook.com/2019/10/image-enhancement-part-iii-spatial.html>]

There are several purposes that underlie spatial enhancement techniques:

- To improve interpretability of image data
- To aid in automated feature extraction
- To remove and/or reduce sensor degradation
- Restore imagery by avoiding noises
- Enhance the imagery for better interpretation
- Extract features such as edges and lineaments

Spatial enhancement techniques are based on the concept of spatial frequency within an image. Spatial frequency is the manner in which gray-scale values, i.e., brightness value, change relative to their neighbors within an image. We can distinguish two types :

- **Low spatial frequency area** : If there is a slowly varying change in gray scale in an image from one side of the image to the other (once a given area in an image).
- **High spatial frequency** : If pixel values vary radically for adjacent pixels in an image, the image is said to have a high spatial frequency.

Figure. III.10. shows examples of zero, high and low spatial frequencies.

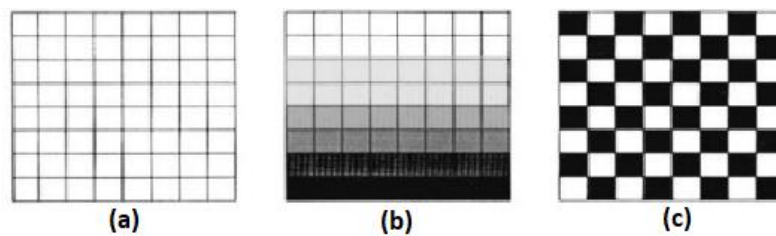


Figure. III.10. Images with zero (a), low (b), and high (c) spatial frequencies.

[\[https://slideplayer.com/slide/12530969/\]](https://slideplayer.com/slide/12530969/)

Spatial enhancement involves the enhancement of either low or high frequency information within an image. Two major methods commonly used in spatial enhancement are:

a. Filtering in the domain of image space (Convolution)

Convolution involves the passing of a moving window over an input image and producing a new image where each pixel in this resulted image is a function of the original pixel values within the spatial neighbor.

The three types of spatial filters used in remote sensor data processing are :

- Low pass filters (Low-Frequency Filtering);
- Band pass filters ;
- High pass filters (High-Frequency Filtering).

➤ *Low pass filters*

Low pass filters block the high spatial frequency detail by using "blurring" filter that highlights low frequency parts of an image while minimizing the high frequency components.

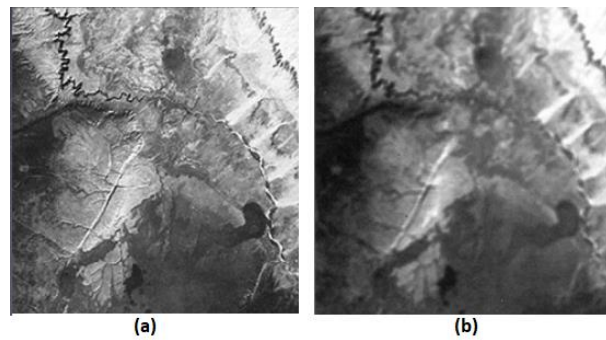


Figure. III.11. Images before (a) and after (b) low pass filter.

[\[https://slideplayer.com/slide/9451846/\]](https://slideplayer.com/slide/9451846/)

➤ **Band pass filters**

Band pass filters allow only signals within a certain band to pass, attenuating the frequencies below a threshold and above another threshold to pass (see **Figure. III.11.**).

➤ **High-pass filters (High-Frequency Filtering)**

Spatial high-pass filtering removes the slowly varying components and enhances the high-frequency local variations (see **Figure. III.12.**). The enhancement of high-frequency information within an image is often called edge enhancement. It highlights edges in the image while preserving the quality of the original image.

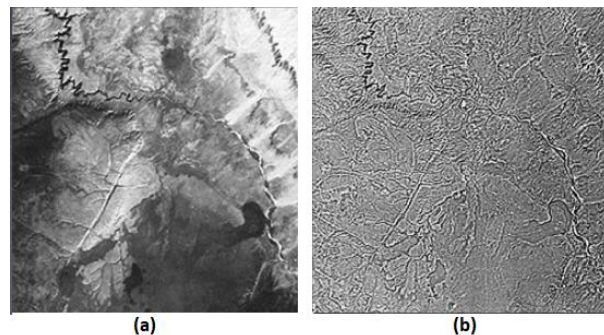


Figure. III.12. Images before (a) and after (b) high pass filter.

[\[https://slideplayer.com/slide/9451846/\]](https://slideplayer.com/slide/9451846/)

b. Filtering in the domain of spatial frequency (Fourier Transform)

The Fourier transformation is used to convert from image space domain to spatial domain of which frequency is controlled by low pass, high pass and band pass filters. After such frequency filtering process, image will be reconstructed by using an inverse Fourier transformation. Low pass filters will cut off high frequency to allow the output of only low frequency image, while high pass filters will cut off low frequency noises such as stripe noise or shading.

III.3.2 Feature Extraction

Feature extraction is the operation to extract various image features for identifying or interpreting meaningful physical objects from images (see **Figure. III.13.**).

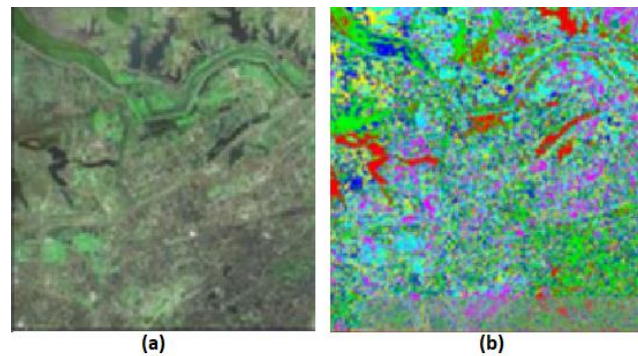


Figure. III.13. Landsat image (a) and the extracted land cover feature image.

[<https://www.mdpi.com/2220-9964/5/3/31/htm>]

Features are classified into three types.

- Spectral features ;
- Geometric features ;
- Textural features.

III.3.2.1 Spectral features:

Color, tone, ratio, spectral index, principle components and normalized vegetation index are widely used.

III.3.2.2 Geometric features:

Spatial filtering of edge detection is commonly used to extract linear features such as roads, geological linearments, boundaries of agricultural fields etc.

III.3.2.3 Textural features

Texture is one of the important characteristics aid in visual image interpretation, especially for high spatial resolution imagery. It is used in identifying objects, regions of interest, or pattern homogeneity in an image (see **Figure. III.14.**).

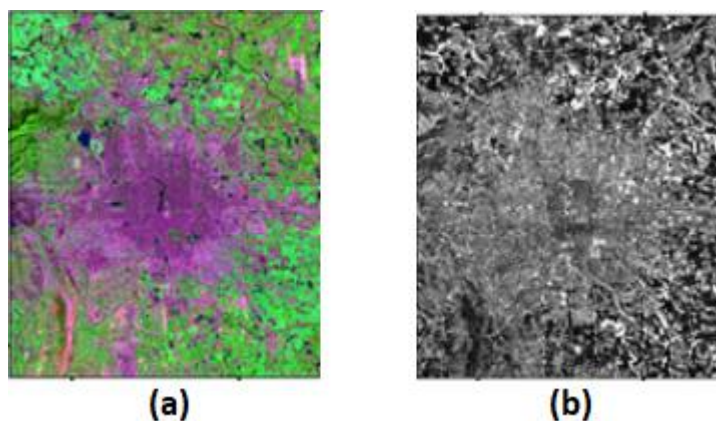


Figure. III.14. Landsat image (a) and the extracted texture features (b).

[<https://www.mdpi.com/2072-4292/6/8/7339/htm>]

III.4 Image Classification

Image classification is the process of assigning land cover classes to pixels. For example, classes include water, urban, forest, agriculture, and grassland. Each class of landcover is

referred to as a "theme" and the product of classification is known as a "thematic map" (see **Figure. III.15.**).

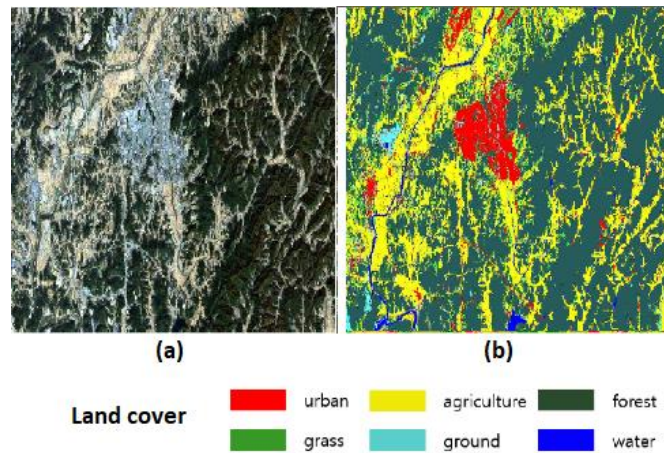


Figure. III.15. Landsat image (a) and the classification (b).

[<https://www.semanticscholar.org/paper/Unsupervised-Classification-of-Landsat-8-OLI-Based-Choi-Noh/eea803d80bb3928dede7b8f111d1f64999f5215c>]

The 2 main types of image classification techniques in remote sensing are:

- Unsupervised image classification
- Supervised image classification

III.4.1 Supervised classification

In supervised classification, the spectral features of each land cover class (ground truth data) are extracted from the image. These areas are known as the "training areas" inform the remote sensing software of major land cover and vegetation classes in the image for a supervised classification (see Figure. III.16.). Every pixel in the input image is classified as belonging to one of the classes depending on how close its spectral features are to the spectral features of the training areas.

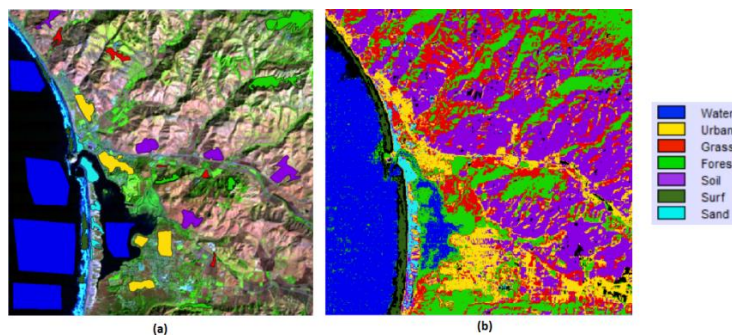


Figure. III.16. Ground truth image (a) with training sites, shown as colored polygons and supervised classification (b).

[<http://blogs.ubc.ca/katernabaranovasgis/2016/11/03/supervised-image-classification/>]

The three basic steps for supervised classification are:

- Select training areas
- Generate signature file
- Classify

Most common classification algorithms are:

- Maximum likelihood
- Minimum-distance
- Principal components
- Support vector machine (SVM)
- Iso cluster

III.4.2 Unsupervised classification

Classification with only spectral features without use of ground truth data. Clustering is an unsupervised classification in which a group of the spectral values will regrouped into a few clusters with spectral similarity (see **Figure. III.17.**).

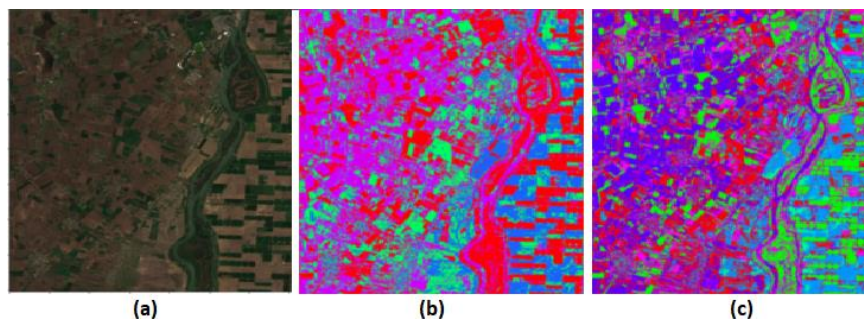


Figure. III.17. Ground truth image (a) the unsupervised classification with 6 clusters (b) and with 8 clusters (c).

[\[https://medium.com/dataseries/unsupervised-learning-cd0b78adb7c\]](https://medium.com/dataseries/unsupervised-learning-cd0b78adb7c)

Unsupervised classification consists in grouping automatically the pixels in the image into different clusters, depending on their spectral features. Each cluster will then be assigned a landcover type by the analyst.

The two basic steps for unsupervised classification are:

- Generate clusters
- Assign classes

Some of the common image clustering algorithms are:

- K-means
- ISODATA

III.5 Suggested reading

Richards, J. A., & Richards, J. A. (1999). Remote sensing digital image analysis (Vol. 3, pp. 10-38). Berlin: Springer.

Lillesand, T., Kiefer, R. W., & Chipman, J. (2015). Remote sensing and image interpretation. John Wiley & Sons.

Schowengerdt, R. A. (2006). Remote sensing: models and methods for image processing. Elsevier.

Al-Doski, J., Mansori, S. B., & Shafri, H. Z. M. (2013). Image classification in remote sensing. Department of Civil Engineering, Faculty of Engineering, University Putra, Malaysia, 3(10).

Ekstrom, M. P. (2012). Digital image processing techniques (Vol. 2). Academic Press.

Liu, J. G., & Mason, P. J. (2016). Image processing and GIS for remote sensing: Techniques and applications. John Wiley & Sons.

Camps-Valls, G., Tuia, D., Gómez-Chova, L., Jiménez, S., & Malo, J. (2011). Remote sensing image processing. Synthesis Lectures on Image, Video, and Multimedia Processing, 5(1), 1-192.

De Jong, S. M., & Van der Meer, F. D. (Eds.). (2007). Remote sensing image analysis: including the spatial domain (Vol. 5). Springer Science & Business Media.

Gao, J. (2009). Digital analysis of remotely sensed imagery. McGraw-Hill Education.

Blaschke, T., Lang, S., & Hay, G. (Eds.). (2008). Object-based image analysis: spatial concepts for knowledge-driven remote sensing applications. Springer Science & Business Media.

IV. Chapter IV : Geographic Information System (GIS)

IV.1 What is Geographic Information System (GIS)

GIS is a computer based system designed to aid in the collection, manage, storage, analysis, modelling (spatial scenario), representation, display, output, and distribution of spatial data and information.

IV.2 Basic concepts of GIS

IV.2.1 GIS data

Data in a GIS represent a simplified view of physical entities, the roads, mountains, accident locations, or other features we wish to identify (see **Figure. IV.1.**).

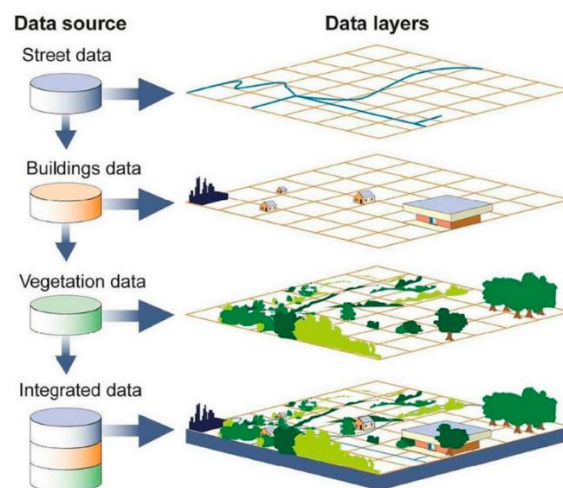


Figure. IV.1. GIS data.

[<https://twitter.com/leicageosa/status/104705165267734400>]

In addition, data include information on the spatial location and extent of the entities, and information on their nonspatial properties.

IV.2.2 Entity

Each entity is represented by a spatial feature or cartographic object in the GIS. Only a subset of essential characteristics of any **entity** are subjectively chosen and recorded by the spatial data developer that support the intended use at the desired level of detail and accuracy (see **Figure. IV.2.**).

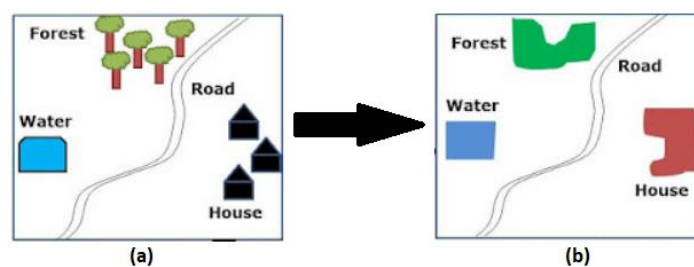


Figure. IV.2. Feature representations.

[<https://www.gisoutlook.com/2020/04/vector-data-model-of-gis.html>]

As illustrated in **Figure. IV.3.**, we may represent landcover in a region by a polygons.

IV.2.3 Feature

Feature is a single entity in GIS that has both geometry and attribute data. The attribute data can be just a single ID number or it can encompass all kinds of other data about the feature. A GIS helps us analyze the spatial relationships and interactions between different features, and model spatial processes.

IV.2.4 Objects

Objects are abstract representations of reality that we store in a spatial database.

IV.2.5 Coordinates

A GIS quantifies the locations of spatial features by recording their coordinates, numbers that describe the position of these features on Earth. Coordinates are used to define the spatial location and extent of geographic objects. Single or groups of coordinates are organized to represent the shapes and boundaries that define the objects (see **Figure. IV.3.**).

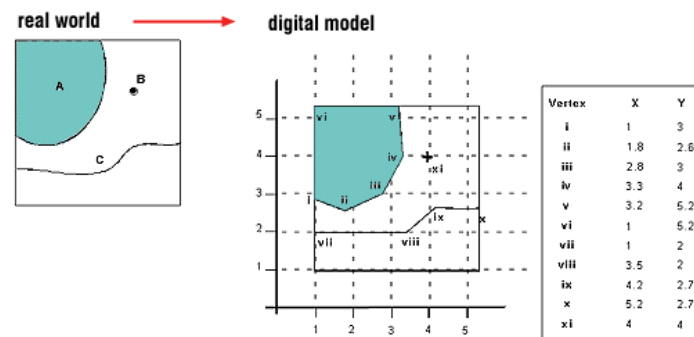


Figure. IV.3. Features and their coordinate spatiales.

[\[https://geogra.uah.es/patxi/gisweb/GISModule/GIST_Vector.htm\]](https://geogra.uah.es/patxi/gisweb/GISModule/GIST_Vector.htm)

Three types of coordinate systems can be distinguished :

- Standard coordinate systems ;
- Cartesian systems ;
- Spherical coordinate systems.

IV.2.5.1 Standard coordinate systems

Coordinates are usually expressed in one of many standard coordinate systems. The coordinate systems are usually based upon standardized map projections that unambiguously define the coordinate values for every point in an area (see **Figure. IV.4.**).

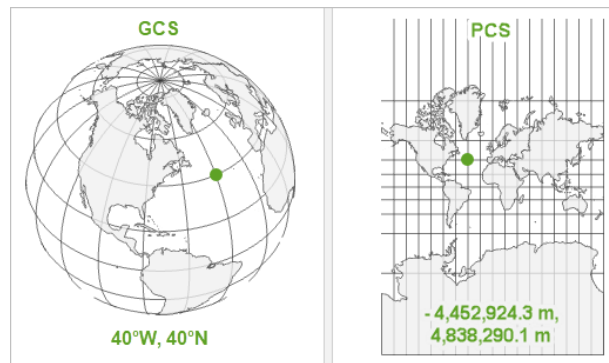


Figure. IV.4. Standard coordinate systems.

[<https://www.esri.com/arcgis-blog/products/arcgis-pro/mapping/coordinate-systems-difference/>]

- **A geographic coordinate system (GCS)** : is a reference framework that defines the locations of features on a model of the earth. It's shaped like a globe—spherical. Its units are angular, usually degrees.
- **A projected coordinate system (PCS)** : is flat. It contains a GCS, but it converts that GCS into a flat surface, using math (the projection algorithm) and other parameters. Its units are linear, most commonly in meters.

IV.2.5.2 Cartesian systems

Spatial data in a GIS most often use a Cartesian coordinate system. Cartesian systems define two or three orthogonal (right angle, or 90°) axes in a plane (see **Figure. IV.5.**).

Three dimensional Cartesian systems in addition define a z axis, orthogonal to both the x and y axes. The origin is defined with zero values at the intersection of the orthogonal axes.

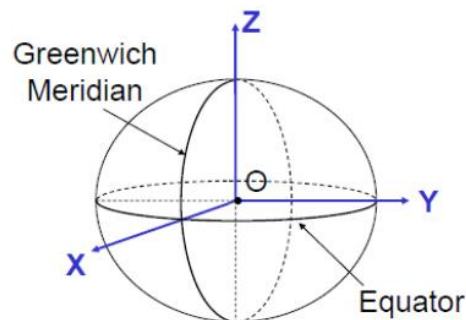


Figure. IV.5. Cartesian coordinate systems.

[<https://www.rsgisworld.com/2018/08/>]

IV.2.5.3 Spherical coordinate systems

Coordinate data may also be specified in a spherical coordinate system. The most common spherical system uses two angles of rotation and a radius distance, r , to specify locations on a modeled earth surface (see **Figure. IV.6.**).

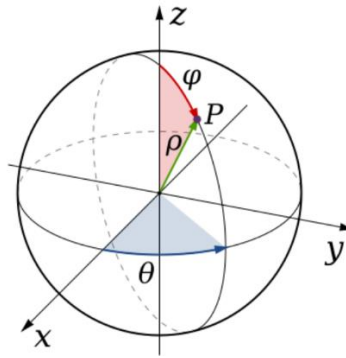


Figure. IV.6. Spherical coordinate system.

[[https://en.wikipedia.org/wiki/File:Spherical_Coordinates_\(Colatitude,_Longitude\).svg](https://en.wikipedia.org/wiki/File:Spherical_Coordinates_(Colatitude,_Longitude).svg)]

IV.2.6 Attribute data

Attribute data is a non spatial information about a geographic feature in a GIS, such as a name, color, pH, or cash value, depth, weight, owner, vegetation type, or land use. Keys, labels, or other indices are used so that the coordinate and attribute data may be viewed, related, and manipulated together (see **Figure. IV.7.**).

Attribute data usually stored in a table, arranged in rows and columns, and linked to the feature by a unique identifier. Attribute data complement coordinate data to define cartographic objects.

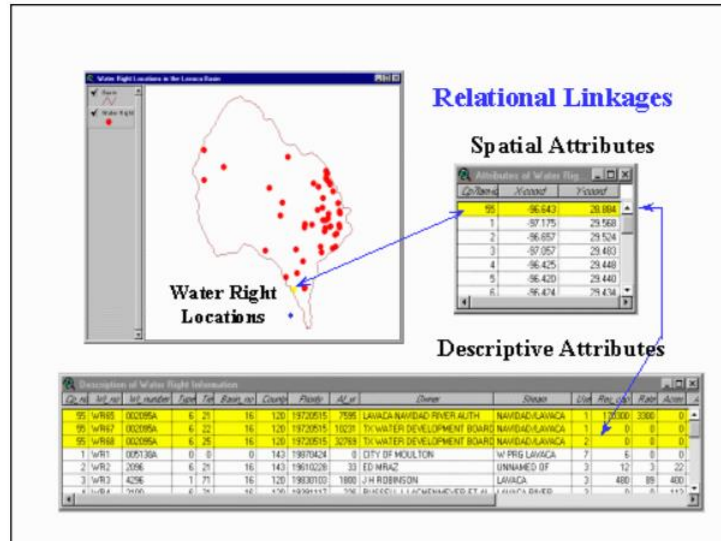


Figure. IV.7. Descriptive Attributes data.

[http://www.glyfac.buffalo.edu/courses/gly560/Lessons/OLD/hbef_geology/ArcHydro-IntroGIS.htm]

Attributes can be categorized as nominal, ordinal, or interval/ratio attributes.

IV.2.6.1 Nominal attributes

Nominal attributes are variables that provide descriptive information about an object.

Exemple :

The color is recorded for each hydrant, vegetation type, a city name, the owner of a parcel, or soil series.

IV.2.6.2 Ordinal attributes

Ordinal attributes imply a ranking or order by their values. An ordinal attribute may be descriptive, such as high, mid, or low, or it may be numeric.

Exemple :

An erosion class may be given a value from 1 to 10. The order reflects only rank, and not the scale.

IV.2.6.3 Interval/ratio attributes

Interval/ratio attributes are used for numeric items where both rank order and absolute difference in magnitudes are represented

Exemple :

Area, length, weight, height, or depth are a few examples of attributes that are represented by interval/ratio variables.

IV.3 GIS Components

A GIS is composed of hardware, software, data, humans, and a set of organizational protocols components. These components must be well integrated for effective use of GIS (see **Figure. IV.8.**).



Figure. IV.8. GIS components.

<https://classhall.com/lesson/components-of-geographic-information-system-gis/>

IV.3.1 Hardware for GIS

Because GIS require large volumes of data that must be entered to define the shape and location of geographic features, GIS hardware often have large data storage capacities, fast computing speed, and ability to capture coordinates. High computational resources are required because spatial analyses are often applied over large areas and/or at high spatial resolutions.

IV.3.2 GIS Software

Software tools and packages for GIS are unique in their ability to manipulate coordinates and associated attribute data. GIS software provides the tools to manage, analyze, and effectively display and disseminate spatial information and reporting the results of spatial analysis. In many instances GIS is the only way to solve spatially-related problems. GIS software provides the specific tools the following tasks :

- Collect qualitative or quantitative information on the nonspatial attributes of geographic features ;
- View and edit data ;
- Manipulate data to generate and extract the information we require ;
- Produce the materials to communicate the information we have developed.
- GIS software packages.

The most common GIS softwares are :

- ArcGIS Pro.
- ArcGIS Desktop
- QGIS
- MapInfo Professional
- Global Mapper
- Maptitude
- Esri ArcGIS.
- Google Earth Pro.
- Google Maps API.
- Citymapper.

IV.3.3 Data and GIS

IV.3.3.1 Sources of data

Two types of data are input into a GIS, spatial and attribute. The data input process consists in encoding both types of data into the GIS database formats. A wide variety of data sources exist for both spatial and attribute data. The most common general sources for spatial data are :

- Aerial photographs;
- Remotely-sensed imagery;
- Hard copy maps;

- Point data samples from surveys; and
- Existing digital data files.

IV.3.3.2 Data input techniques

There are several methods of entering the spatial data into a GIS that can be used singly or in combination (see **Figure. IV.9.**). There are at least four basic procedures which are:

- Manual digitizing;
- Automatic scanning;
- Entry of coordinates using coordinate geometry; and the
- Conversion of existing digital data.



Figure. IV.9. Example of data input technique.

[<https://gis-university.com/gis-data-input-techniques/>]

IV.3.3.3 Data editing and quality assurance

Data editing aims to verify the errors that arise during the encoding of spatial and non-spatial data. It is a time-intensive consuming process.

Several types of errors can occur during data input. They can be classified as:

- **Incompleteness of the spatial data**

This includes missing points, line segments, and/or polygons.

- **Locational placement errors of spatial data**

These types of errors usually are the result of careless digitizing or poor quality of the original data source.

- **Distortion of the spatial data**

This kind of error is usually caused by base maps that are not scale-correct over the whole image, e.g. aerial photographs, or from material stretch, e.g. paper documents.

- **Incorrect linkages between spatial and attribute data**

This type of error is commonly the result of incorrect unique identifiers (labels) being assigned during manual key in or digitizing.

- **Attribute data is wrong or incomplete**

Often the attribute data does not match exactly with the spatial data. This is because they are frequently from independent sources and often different time periods.

IV.4 Spatial data model

Spatial data model is the set of objects in a spatial database plus the relationships among them. The purpose of a spatial data model is to provide a formal means (set of rules and/or constructs) of representing and manipulating spatially referenced information in a computer. There are two main data models (see **Figure. IV.10.**):

- Raster data models ;
- Vector data models.

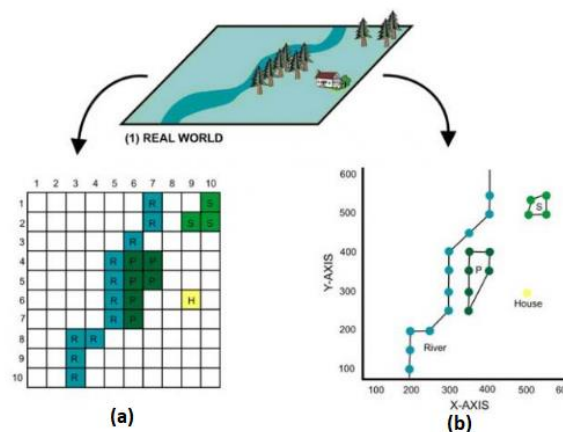


Figure. IV.10. GIS data model : Raster model (a) and Vector model (b).

[http://www.newdesignfile.com/post_vector-and-raster-data-model_15523/]

IV.4.1 Vector data models

Vector data model use discrete elements such as points, lines, and polygons to represent the geometry of realworld entities (see **Figure. IV.10.** (b)).

Exemple :

Farm fields, roads, wetlands, cities, and census tracts are examples of entities that are often represented by discrete objects.

There are three basic types of vector objects: points, lines, and polygons.

- **Points** : contain only a single coordinate pair to represent the location of an entity. They are often used to define the locations of “small” objects such as wells, buildings, or ponds.
- **Lines** : may be used to represent linear objects, for example, rivers or roads, or to identify the boundary between what is a part of the object and what is not a part of the object.
- **Polygons** : also called areas, are two-dimensional features that are used to represent features such as city boundaries, vegetation communities.

Vector data models can be structured with two common data structures :

- The spaghetti data model ;
- The topological data model.

IV.4.1.1 The spaghetti model

The spaghetti model represents each point, line, and/or polygon feature by a string of X, Y coordinate pairs. Spatial relationships are not explicitly encoded within the spaghetti model; rather, they are implied by their location. This results in a lack of topological information, which is problematic if the user attempts to make measurements or analysis.

IV.4.1.2 The topological data model

Topology is a set of rules (an informative geospatial property) that model (describes) the relationships between neighboring points, lines, and polygons and determines how they share geometry. Topology allows the computer to rapidly determine and analyze the spatial relationships of all its included features.

Three basic topological are considered :

- **Connectivity** : describes the arc-node topology for the feature dataset.
- **Area definition** : Area definition states that an arc that connects to surround an area defines a polygon, also called polygon-arc topology.
- **Contiguity** : Is based on the concept that polygons that share a boundary are deemed adjacent, or contiguous. Specifically, polygon topology requires that all arcs in a polygon have a direction (a from-node and a to-node), which allows adjacency information to be determined.

IV.4.1.3 Advantages and disadvantages of the Vector Model

a. Advantages

- Better representations of reality due to the accuracy and precision of points, lines, and polygons.
- Provides an increased ability to alter the scale of observation and analysis.
- Zooming deep into a vector image does not change the view of a vector graphic.
- Vector data tend to be more compact in data structure.
- File sizes are typically much smaller than their raster counterparts.
- Topology is inherent in the vector model and it results in simplified spatial analysis (e.g., error detection, network analysis, proximity analysis, and spatial transformation).

b. Disadvantages

- The data structure tends to be much more complex than the simple raster data model. The location of each vertex must be stored explicitly in the model.

- The implementation of spatial analysis can also be relatively complicated due to minor differences in accuracy and precision between the input datasets.
- The algorithms for manipulating and analyzing vector data are complex and can lead to intensive processing requirements, particularly when dealing with large datasets.

IV.4.2 Raster data models

Raster data models consists of a regular set of cells in a grid pattern (see Figure. IV.10. (a)). The entities of interest are represented by attribute values associated with each cell location. Each cell in a raster carries a single value, which represents the characteristic of the spatial phenomenon at a location denoted by its row and column. The raster model is used most commonly with variables that may change continuously across a region such as elevation, mean temperature, slope, average rainfall, cumulative ozone exposure, or soil moisture.

IV.4.2.1 Advantages and disadvantages of the Raster Model

a. Advantages

- The technology required to create raster graphics is inexpensive and ubiquitous (a digital camera, satellites).
- The relative simplicity of the underlying data structure. Each grid location represented in the raster image correlates to a single value (or series of values if attributes tables are included).

b. Disadvantages

- Raster files are very large.
- The geometric transformations during map reprojection affect the raster graphics quality.
- Changing map projections will alter the size and shape of the original input layer and frequently result in the loss or addition of pixels.
- Raster data model is not suitable for analyzing multiple raster graphics produced at differing scales and pixel resolutions.

IV.4.3 Comparison of Raster and Vector Data Models

Characteristic	Vector Model	Raster Model
Data structure	• Usually complex	• Usually simple
Storage requirement	• Smaller for most data sets	• Larger for most data sets without compression
Coordinate conversion	• Simple	• May be slow due to data volumes, and require resampling

Analysis	<ul style="list-style-type: none"> • Preferred for network analysis, many others spatial operations more complex 	<ul style="list-style-type: none"> • Easy for continuous data, simple for many layer combinations
Spatial precision	<ul style="list-style-type: none"> • Limited only by positional measurements 	<ul style="list-style-type: none"> • Floor set by cell size
Accessibility	<ul style="list-style-type: none"> • Often complex 	<ul style="list-style-type: none"> • Easy to modify or program, due to simple data structure
Display and output	<ul style="list-style-type: none"> • Maplike, with continuous curves, poor for images 	<ul style="list-style-type: none"> • Good for images, but discrete features may show "stairstep" edges

Table. IV.1. Comparison between Raster and Vector Data Models

IV.5 GIS Spatial data organization

GIS software organize data in thematic data layers. Thematic data layers are information data sets that have a common feature or attribute for a given set of cartographic objects in the region of interest placed in the same layer of spatial data. Each theme represents a data set for a defined area (see **Figure. IV.11.**).

In any GIS project a variety of data layers will be required that are commonly defined based on the needs of the user and the availability of data.

Two types of data are required for each layer, attribute and spatial data.

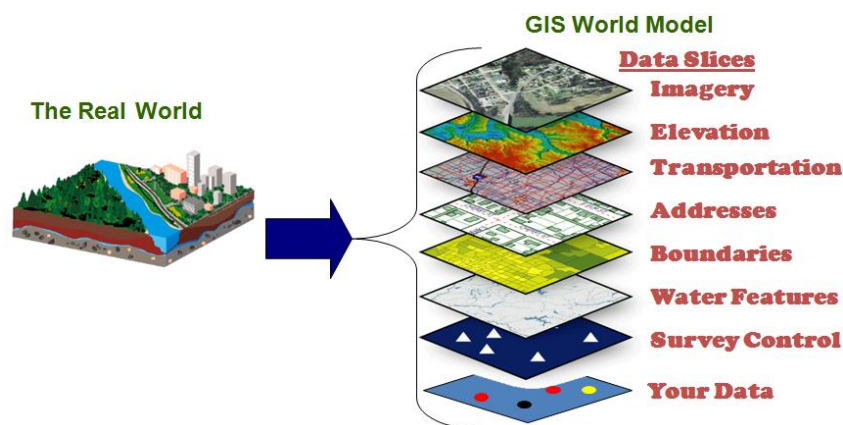


Figure. IV.11. GIS spatial data organization : thematic data layers.

[<https://www.admitnetwork.org/work-packages/gis-gps/>]

IV.6 Spatial analyse methodes

The process of examining the locations, attributes, and relationships of features in spatial data through *statistical analysis* and other analytical techniques in order to address a question or gain useful knowledge (see **Figure. IV.12.**).

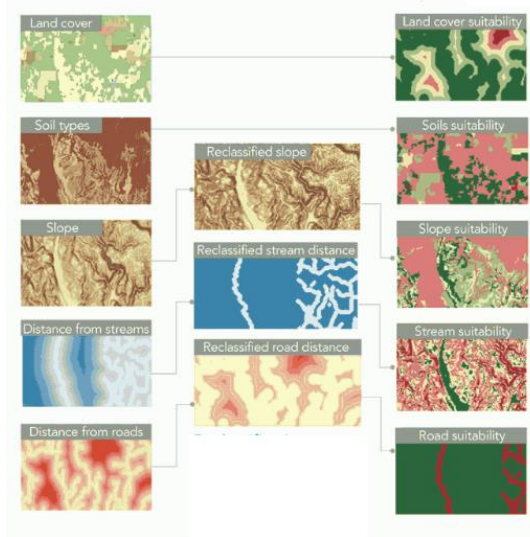


Figure. IV.12. Example of GIS Spatial data analysis.

[<https://www.esri.com/arcgis-blog/products/product/analytics/how-to-perform-spatial-analysis/>]

Spatial analysis extracts or creates new information from spatial data, and then explore and examine those results with spatial correlation derived by computer processing.

Common types of analysis include:

- Location, quantity and density of features
- Spatial relationships and patterns
- Temporal change

IV.7 Spatial database

A spatial database is a database that includes spatial data that represents objects defined in a geometric space (points, lines and polygons), along with tools for accessing, storing, and managing such data (see **Figure. IV.13.**).

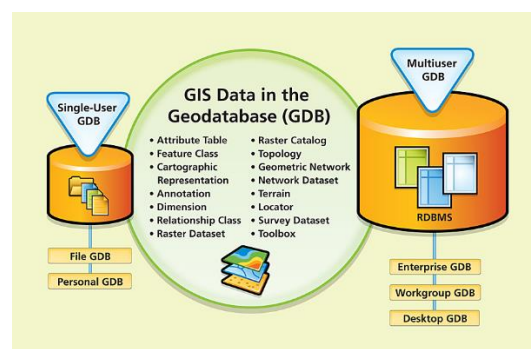


Figure. IV.13. GIS database.

[<https://www.esri.com/news/arcnews/winter0809/articles/the-geodatabase.html>]

IV.7.1 Database management system (DBMS)

A software system, i.e., computer programs, serves as an interface between users and their databases (see **Figure. IV.14.**). It designed to:

- Organize data tables in a flexible manner,
- Provide tools to add, modify or delete data from the database,
- Query the data,
- Produce reports summarizing selected contents.

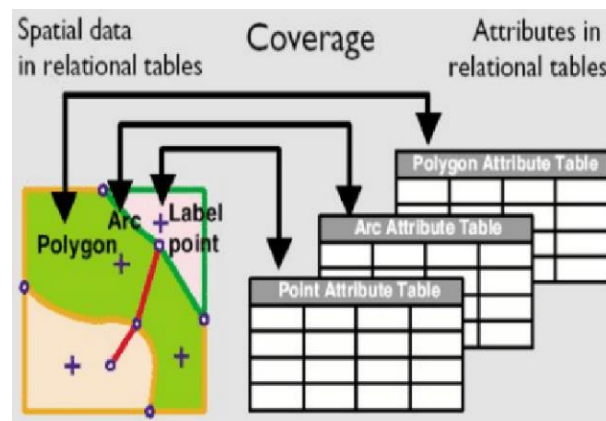


Figure. IV.14. GIS DBMS.

[<https://www.semanticscholar.org/paper/Fuzzy-Object-Relational-Database-Management-System-Al-Kandari-Alhouli/40b5250a389732db5decf9e998a69b05f7d801e7>]

IV.7.2 Factors Affecting the Adoption of GIS systems

The capacity of GIS systems to store, retrieve, analyse, model and map large areas with huge volumes of spatial data has led to an extraordinary proliferation of GIS technologies in several applications and has been emerging in many professional work environments.

The adoption of Geographic Information Systems (GIS) Technology has been emerging in many professional work environments due to the following factors :

- The development of the remarkable positioning technology, generically known as Global Navigation Satellite Systems (GNSS). GNSS are indispensable tools in commerce, planning, and safety ;
- The development of Spatial data display and analysis capabilities due to the the computing improvements ;
- Faster computers with more storage. Powerful field computers are lighter, faster, more capable, and less expensive ;
- The increased interconnectedness via WiFi and mobile networks;
- Costs decrease and performance increases at dizzying rates ;
- GIS on rugged, field-portable computers has been particularly useful in field data entry and editing.

- Advances in image technologies, collection and interpretation with more accurate maps were available.
- The development of many techniques for extracting information from image data, and ensuring this information faithfully represents the location, shape, and characteristics of features on the ground.

Thus, advances in these three key technologies imaging, GNSS, and computing, have substantially aided the development of GIS.

IV.7.3 GIS Application

GIS technology has been emerging over the last several decades as one of the fastest-growing technologies in professional disciplines (see **Figure. IV.15.**). It has been used to solve several problems in many applications such as :

- **Agriculture** : Farm management – Pest/Disease tracking – Crop monitoring – Yield prediction – Soil analysis
- **Disaster Risk Reduction and Management** : Vulnerability Assessment • Hazard Modeling • Easements and Relocation Schemes utilities management
- **Natural Resource Management** : Forestry • Ecology • Mining • Fisheries • Biodiversity Conservation Ecosystems modelling
- Identify the source, location, and extent of adverse environmental impacts
- **Planning and Economic Development** :
- Land Use/Zoning • Population Forecast • Market Analysis • Tax Mapping • Transportation and infrastructure landscape assessment and planning Market analysis
- **Ecosystems Services Accounting** : Ecosystem Accounts • Opening-Closing stocks • Economic Valuation • Scenario Modeling

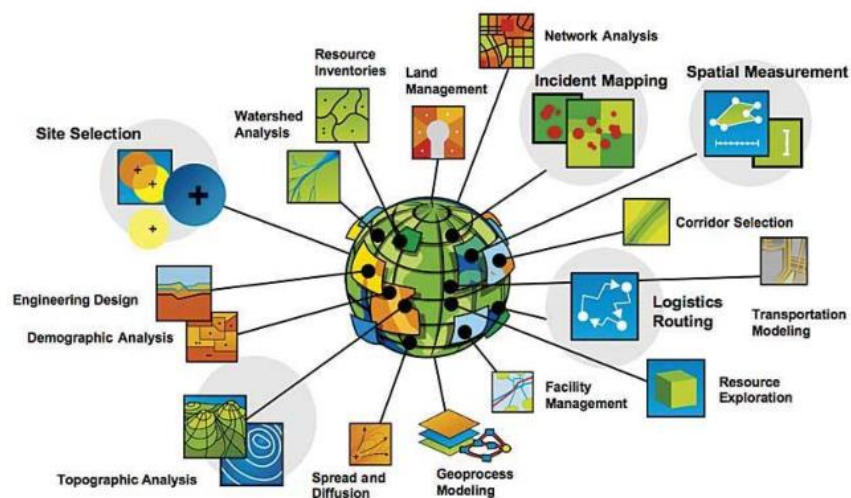


Figure. IV.15. GIS applications.

[<https://www.latestgkgs.com/geographical-information-system-gis-3627-a>]

IV.8 Suggested reading

Bolstad, P. (2016). GIS fundamentals: A first text on geographic information systems. Eider (PressMinnesota).

Harvey, F. (2015). A primer of GIS: fundamental geographic and cartographic concepts. Guilford Publications.

Fazal, S. (2008). GIS basics. New Age International.

Chang, K. T. (2008). Introduction to geographic information systems (Vol. 4). Boston: McGraw-Hill.

Franklin, C., & Hane, P. (1992). An Introduction to Geographic Information Systems: Linking Maps to Databases [and] Maps for the Rest of Us: Affordable and Fun. Database, 15(2), 12-15.

Bernhardsen, T. (2002). Geographic information systems: an introduction. John Wiley & Sons.

Price, M. H. (2010). Mastering ArcGIS (pp. 73-89). New York, NY, USA: McGraw-Hill.

Gorr, W. L., & Kurland, K. S. (2011). GIS tutorial 1: Basic workbook. Esri Press.

Gregory, I. N., & Ell, P. S. (2007). Historical GIS: technologies, methodologies, and scholarship (Vol. 39). Cambridge University Press.

Mesev, V. (2008). Integration of GIS and remote sensing. John Wiley & Sons.

Shellito, B. A. (2011). Introduction to geospatial technologies. Macmillan Higher Education.

Harvey, F., Kwan, M. P., & Pavlovskaya, M. (2005). Introduction: critical GIS. Cartographica: The International Journal for Geographic Information and Geovisualization, 40(4), 1-4.

Sutton, T., Dassau, O., & Sutton, M. (2009). A gentle introduction to GIS. Chief Directorate: Spatial Planning & Information, Department of Land Affairs, Eastern Cape, South Africa.

V. Chapter V : ARCGIS Software

V.1 What is ArcGIS ?

ArcGIS is a geographical information system (GIS) software, developed by Esri (Environmental Systems Research Institute), that allows handling, viewing, editing, managing and analyzing geographic information by visualizing geographical statistics through layer building maps in which each category of spatial feature is a separate layer.

V.2 What can do with ArcGIS ?

ArcGIS allows you to:

- Create, share and use maps;
- Gather geographic information;
- Create and manage geographic databases;
- Solve problems with spatial analysis;
- Create map-based applications;
- Communicate and share information through the power of
- Geography and visualization.

V.3 ArcGIS software?

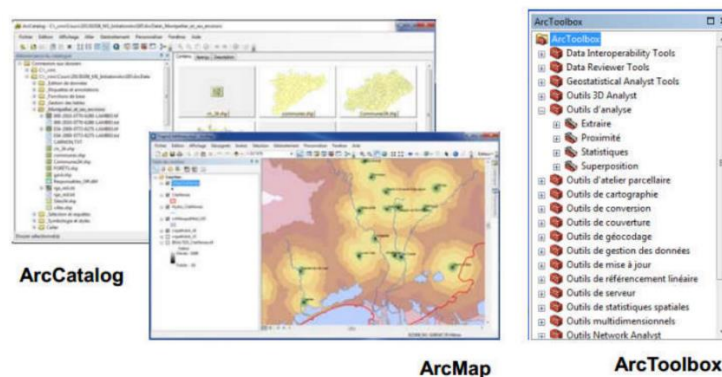


Figure.V.1. Principal applications of ArcGIS.

The ArcGIS software includes a suite of integrated applications (see **Figure. V.1**):

V.3.1 ArcCatalog

ArcCatalog facilitates the organization and management of all GIS data (maps, datasets, models, etc.). Like windows explorer, ArcCatalog is considered as an "explorer" of cartographic data. It allows you to organize, preview, search, describe (metadata) geographic data. It allows:

- Exploration of geographical and attribute data.
- The highlighting of geographical data.
- Data management (create, define, move, rename, delete...).
- The description of the data (metadata).

V.3.2  ArcMap

ArcMap is the principal application of ArcGIS Desktop. It is subdivided into two interfaces (see **Figure. V.2.**):

- Visualization and processing (analysis, editing, etc.) of geographic data in the “data view” window ;
- Map layout in the “layout view” window.

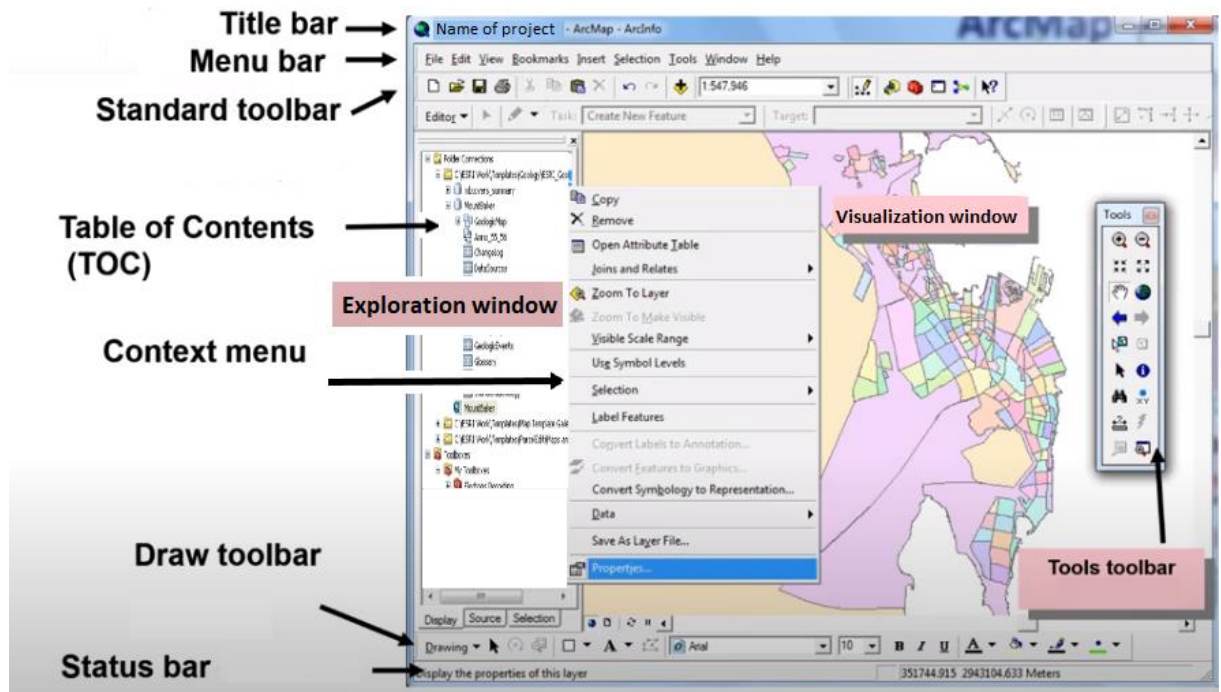


Figure. V.2. Presentation of ArcMap interface.

[<https://desktop.arcgis.com/fr/arcmap/latest/map/main/a-quick-tour-of-arcmap.htm>]

V.3.3  ArcGlobe

ArcGlobe allows 3D visualization of the larger study areas with global extents (see **Figure. V.3.**).

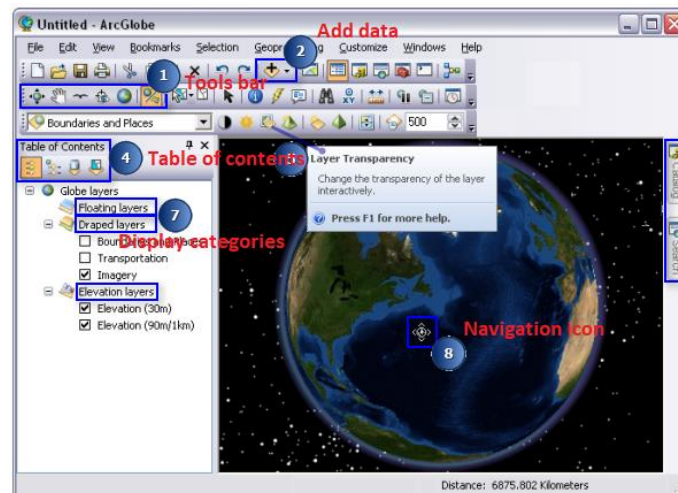


Figure. V.3. Presentation of ArcGlobe interface.

[<https://desktop.arcgis.com/fr/arcmap/latest/extensions/arcglobe/the-arcglobe-user-interface.htm>]

V.3.4 ArcToolbox

The ArcToolbox brings together all the geoprocessing tools useful for performing operations on geographic data (see **Figure. V.4.**). It is available from the 3 applications presented above.

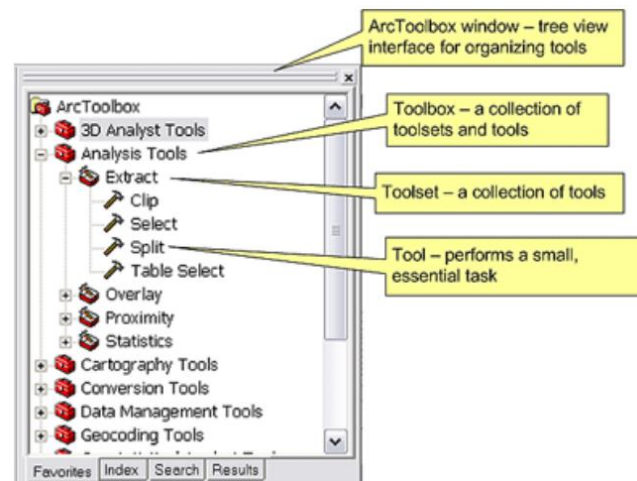


Figure. V.4. Presentation of ArcToolbox interface.

[<https://desktop.arcgis.com/fr/arcmap/latest/extensions/arcglobe/the-arcglobe-user-interface.htm>]

The ArcToolbox allows:

- File format conversions.
- Definition, change of projection.
- Analysis and geoprocessing.
- Tools specific to ArcGIS extensions.
- Tools, processing templates created by the user.
- Processing model (sequence of several tasks).
- Standard Script tool (Python, VBscript, Javascript...)

V.4 Exploring geographic data in ArcCatalog

Open **ArcCatalog**: Start > All Programs > ArcGIS > ArcCatalog.

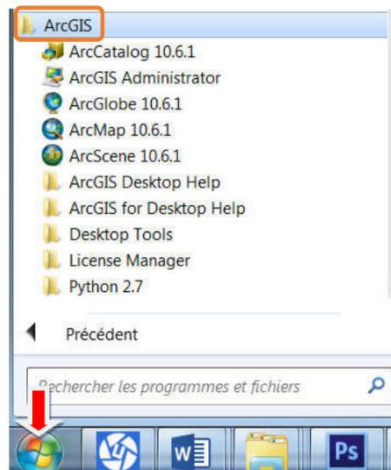


Figure.V.5. Open ArcCatalog on Windows.

The ArcCatalog interface is organized as follows (see **Figure. V.6.**) :

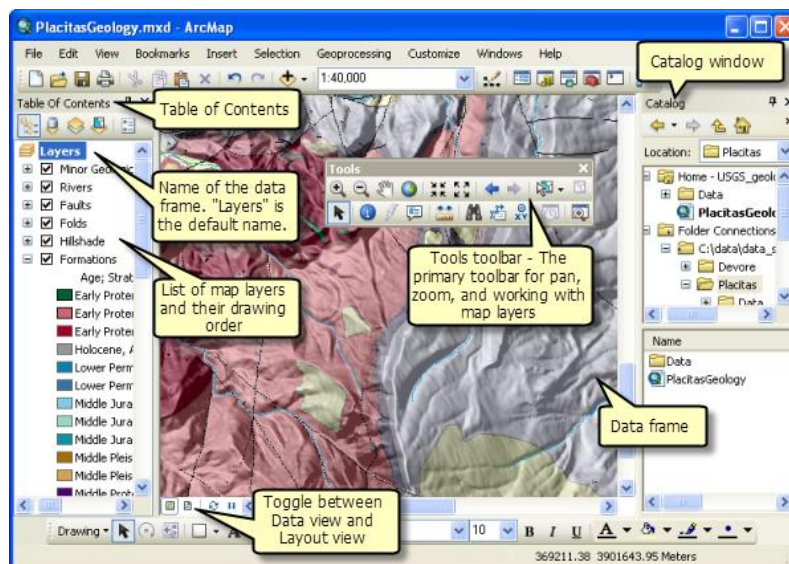



Figure.V.6. The ArcCatalog interface.

First, we create a link to our working directory to quickly access our data geographic :

Click on the icon  and then navigate to the directory: "D:\ File path" containing the data you will work with in your project.

V.4.1 Menu bar :

Allowing various operations.

V.4.2 Exploration window

Exploration window on ArcCatalog allows exploring, i.e., browse, copy, paste, move, rename, the geographical data. In addition, this window allows to perform ArcGIS-specific data management operations, including the creation and organization of new geographic files.

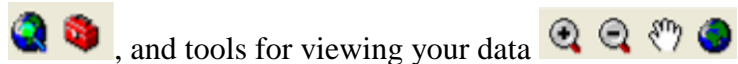
V.4.3 Visualizatio window

Visualizatio window allows viewing the geographical data, made up of 3 tabs:

- **Content tab** : provides information on the content of the directory, or the name and type of file selected in the exploration window.
- **Preview tab** : allows viewing of the content of the selected file. The drop-down menu at the bottom left of this window gives you the choice between the geographical representation of the file (“Geography”) or the data table associated with it (“Table”).
- **Metadata tab** : allows you to view the metadata (data describing the data).

V.4.4 Tool bars

Allowing various operations including starting ArcMap and ArcToolbox via the buttons



, and tools for viewing your data .

V.5 Types of geographic data

Each type of data recognized by ArcCatalog is indicated by a specific icon. **Figure. V.7.** lists the most common file types.

A precise definition of the different file formats used in ArcGIS is available in the ArcGIS help via the main menu “**Help > ArcGIS Desktop Help >...**”:

- “... > Contents > ArcGIS Glossary > and type the name of the format”
- “... > Index > Shapefile > described” for example.

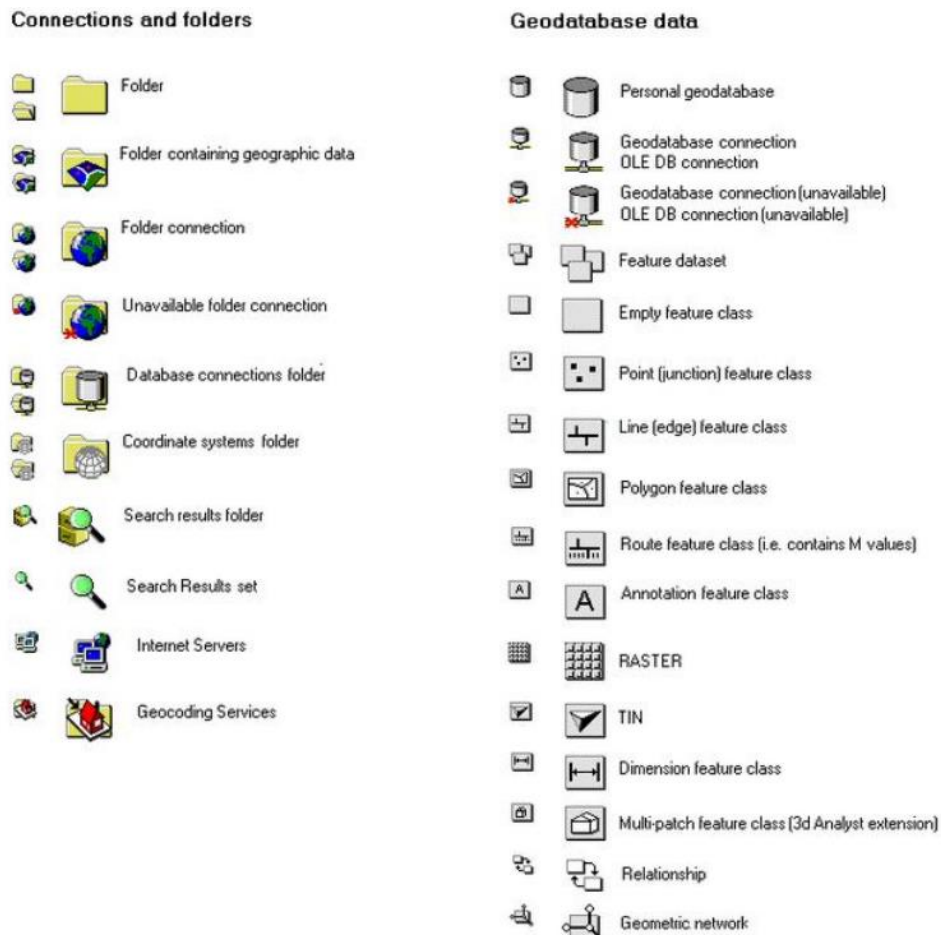


Figure.V.7. The ArcGIS data icons.

V.6 Handling geographic data files in ArcCatalog

Geographic data files appearing in ArcCatalog corresponds to several files (see **Figure. V.8. Table. V.1.**). These files are complementary and each contain part of the geographic information necessary for correct reading of the corresponding file by ArcGIS.

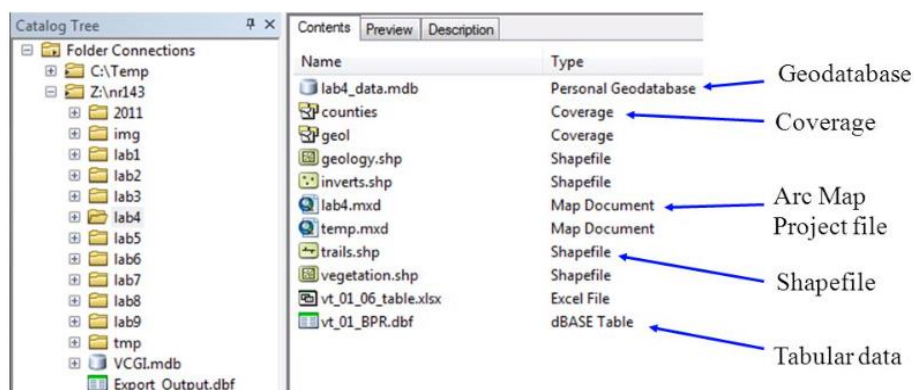


Figure.V.8. ArcCatalog data file types.

<https://slideplayer.com/slide/6114131/>

File extension	File description (content)
.dbf	Attribute information (Tabular Data)
.shp	Feature geometry (Shape File)
.shx	Feature geometry index
.aih	Attribute index
.ain	Attribute index
.prj	Coordinate system information
.sbn	Spatial index file
.sbx	Spatial index file
.mdb	Geodatabase
.mxd	Arc Map Project File

Table. V.1. Geographic data files in ArcCatalog and their descriptions.

V.6.1 Shape file

The shapefile (.shp) allows storing geographic location and associated attribute information, i.e., shape, and attributes of geographic features. A shapefile is stored in a set of related files and contains one feature class (see **Figure. V.9.**).

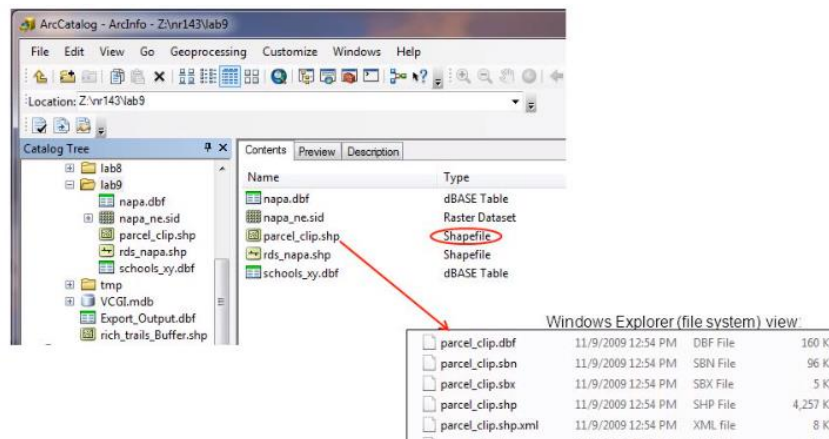


Figure.V.9. ArcCatalog shape file.

<https://slideplayer.com/slide/6114131/>

V.6.2 Coverage

A coverage is a complex directory structure that stores vector data, i.e., contains both the spatial (location) and attribute (descriptive) data, for geographic features. Coverages use a set of feature classes to represent geographic features (see **Figure. V.10.**).

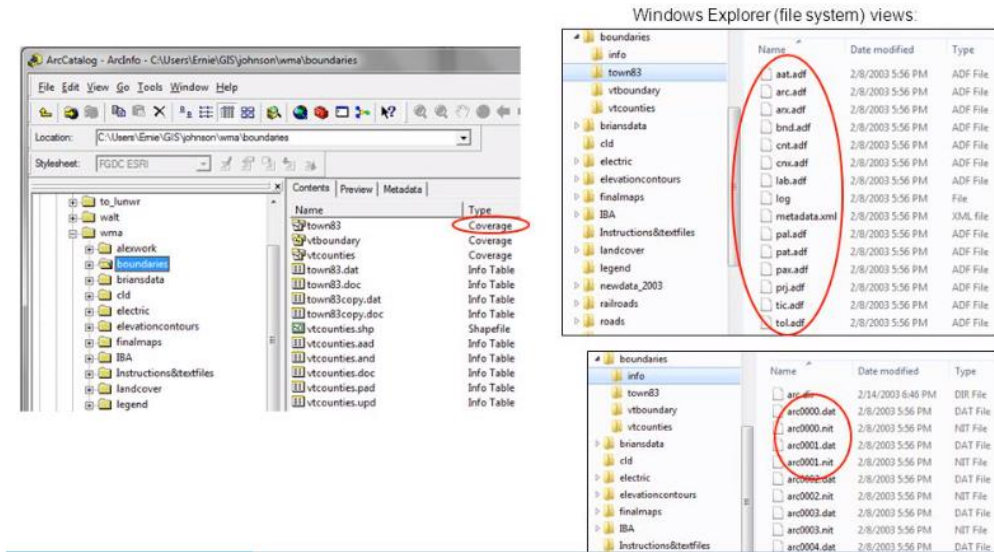


Figure.V.10. ArcCatalog coverage directory.

<https://slideplayer.com/slide/6114131/>

V.6.3 Tabular data

Tabular data (.dbf) forms the basis of geographic features and enables you to view, query, and analyze your data. Tables are composed of rows and columns, and all rows have the same columns. In ArcGIS, rows represent records, and columns represent fields. Each field is used to store a specific type of data, such as a number, date or text (see **Figure. V.11.**).

The image shows a screenshot of a 'Table' window in ArcGIS. The window title is 'Table' and it contains a grid of data for 'Parcels'. The columns are FID, Parcel ID, Zoning, Address, Zip Code, State, and Tax Region. The data is as follows:

FID	Parcel ID	Zoning	Address	Zip Code	State	Tax Region
0	8618308030	Residential	7228 STREAMSIDE DR	80525	CO	2101
1	9624125001	Residential	7605 S COUNTY RD 13	80527	CO	2019
2	8618306004	Residential	7318 SILVER MOON LN	80525	CO	2101
3	8618306026	Residential	7319 SILVER MOON LN	80525	CO	2101
4	8618405075	Residential	1655 STREAMSIDE DR	80525	CO	2100
5	8618308052	Residential	1300 STREAMSIDE CT	80525	CO	2101
6	8618308032	Residential	7312 STREAMSIDE DR	80525	CO	2101
7	8618310073	Residential	1606 GREENSTONE TR	80525	CO	2100
8	8618306015	Residential	1401 WHITE PEAK CT	80525	CO	2101
9	8618306014	Residential	7507 GREENSTONE TR	80525	CO	2101
10	8618308042	Residential	7514 GOLD HILL CT	80525	CO	2101
11	8618308043	Residential	7515 GOLD HILL CT	80525	CO	2101
12	8618308062	Residential	7119 SILVER MOON LN	80525	CO	2101

Figure.V.11. ArcCatalog tabular data file.

<https://desktop.arcgis.com/fr/arcmap/latest/manage-data/tables/what-are-tables-and-attribute-information.htm>

V.6.4 Map document

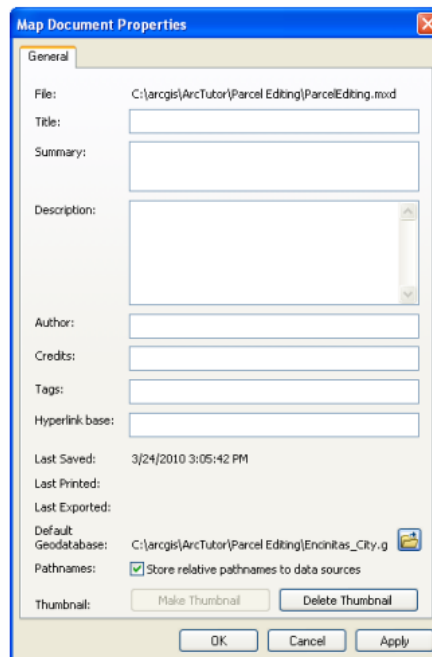


Figure.V.12. ArcCatalog Map document properties.

[<https://desktop.arcgis.com/fr/arcmap/latest/manage-data/tables/what-are-tables-and-attribute-information.htm>]

ArcMap document files (.mxd : **Map Exchange Document**) contain map, specifics about the GIS data used (including pointers to the file location for each dataset), display information (symbology and labeling) and other elements used in ArcMap. The MapDocument object provides access to most of the map document properties (File > Map Document Properties) (see **Figure. V.12.**).

V.6.5 Geodatabase

A geodatabase is an efficient way to store GIS information, i.e., spatial and attribute data and the relationships that exist among them, in one large file. Conversely to shapefiles that contain only one layer, a geodatabase contains many layers, know as « feature classes » (see **Figure. V.13.**).



Figure.V.13. ArcCatalog Geodatabase.

[<https://slideplayer.com/slide/6114131/>]

There are three types of geodatabase:

- **File Geodatabases** : Stored as folders in a file system. Each dataset is held as a file that can scale up to 1 TB in size. This option is recommended over personal geodatabases.
- **Personal Geodatabases** : All datasets are stored within a Microsoft Access data file, which is limited in size to 2 GB.
- **ArcSDE Geodatabases** : Stored in a relational database.

V.6.6 Feature classes

Feature classes represent homogeneous sets of common features with the same spatial representation (such as points, lines, or polygons) and a common set of attributes (see **Figure. V.14.**). The four most commonly used feature classes are points, lines, polygons, and annotation (see **Figure. V.15.**).

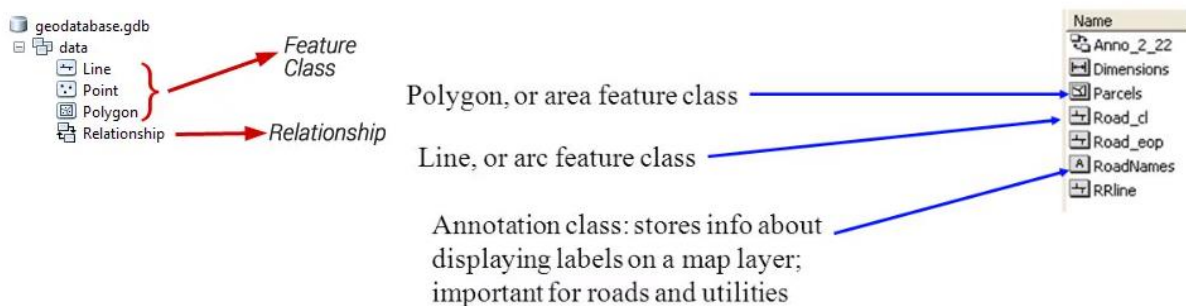


Figure.V.14. ArcCatalog feature classes.

[<https://slideplayer.com/slide/6114131/>]

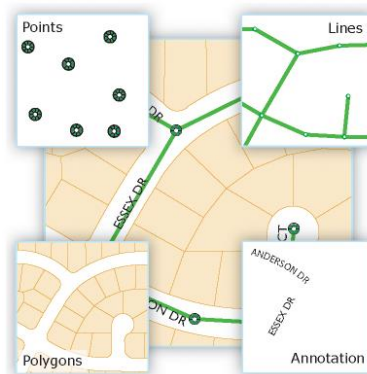


Figure.V.15. ArcCatalog Feature entity classes.

[<https://pro.arcgis.com/fr/pro-app/latest/help/data/feature-classes/feature-classes.htm>]

V.6.7 Feature dataset

Feature dataset is a thematic grouping of feature classes (see **Figure. V.16.**).



Figure.V.16. ArcCatalog Feature dataset.

[<https://slideplayer.com/slide/6114131/>]

V.7 Data management

You can create new feature classes, tables or relationship classes within a geodatabase (see Figure. V.17.).

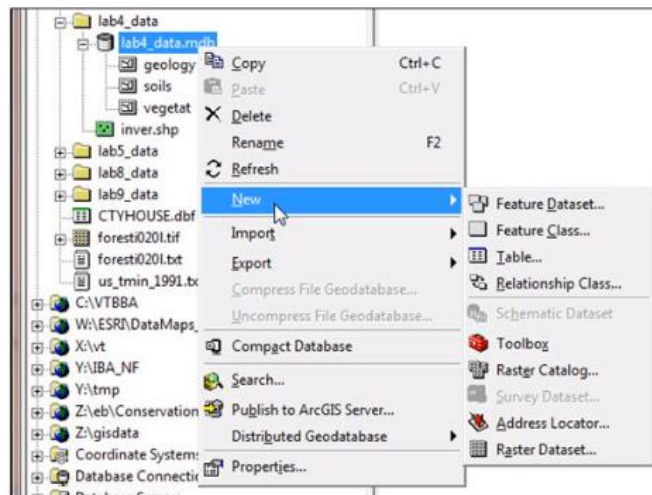


Figure.V.17. ArcCatalog : Data management : creation of classes.

[<https://slideplayer.com/slide/6114131/>]

You can import existing shapefiles or coverages into a geodatabase or export a feature class to a shapefile (see Figure. V.18.).

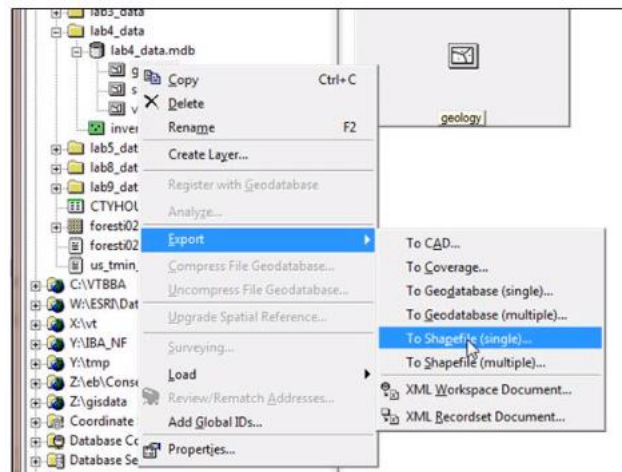



Figure.V.18. ArcCatalog : Data management : import/export of classes.

[<https://slideplayer.com/slide/6114131/>]

V.8 Help in ArcCatalog

In addition to the “Help Tool”  presented previously, the “Help” tab, and in particular the "ArcGIS Desktop Help" menu of ArcCatalog and ArcMap contains a whole series very well documented information to help the user, including (see **Figure. V.19.**):

- A **search** for help via a summary (books), an index or a search menu
- A **glossary** of terms used in ArcGIS (“GIS glossary”)
- **Tutorials** (in the “Getting started > tutorials” directory)
- ...

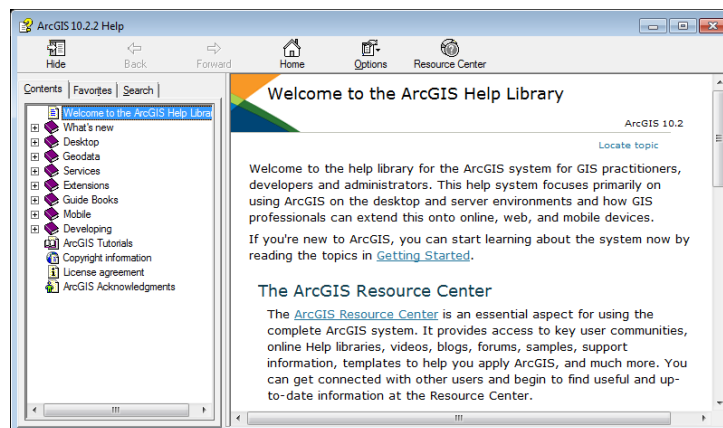



Figure.V.19. The ArcGIS help menu.

[<https://vector.geospatial.science/textbook/section-seven-arcgis-help-menu>]

V.9 Open an ArcMap project

To open an ArcMap project (new or pre-existing), we have two options (see **Figure. V.20.**):

- Click on “Start > All Programs > ArcGIS > ArcMap”
- Use **the shortcut icon to ArcMap**  available in ArcCatalog and choose :

- Start using ArcMap with: **A new empty map**” to open a new empty document
- Or, “Start using ArcMap with: **An existing map**” to open a pre-existing ArcMap document, and then “Browse for maps”. Then navigate to the pre-existing ArcMap project in the directory « D:\Project path\Project name.mxd »
Open the project.

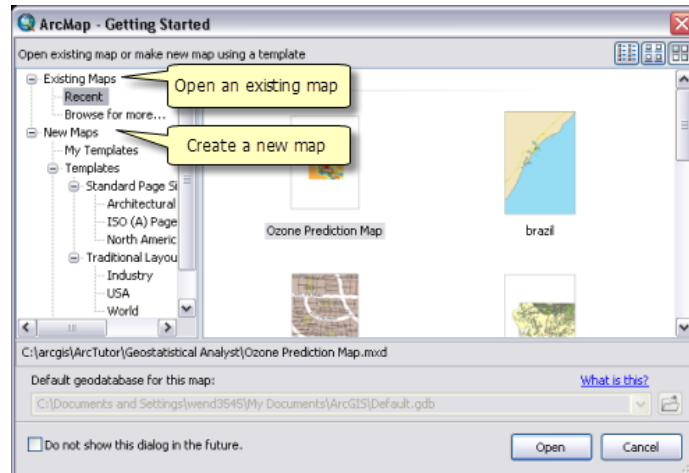


Figure.V.20. The ArcMap : Open ArcMap project.

[\[https://desktop.arcgis.com/fr/arcmap/latest/map/working-with-arcmap/starting-arcmap.htm\]](https://desktop.arcgis.com/fr/arcmap/latest/map/working-with-arcmap/starting-arcmap.htm)

V.10 Structure of an ArcMap project

The ArcMap interface (in « **Data View** » mode) is organized as follows :

V.10.1 Table of Contents

Containing a list of the ArcMap project data layers. The "Table of Contents" subdivides itself into three tabs (see **Figure. V.21.**):

- **Draw order** : to select and organize your layers,
- **Source** : indicating the directory in which the files are located
- **Selection** : containing only the files selected for display.

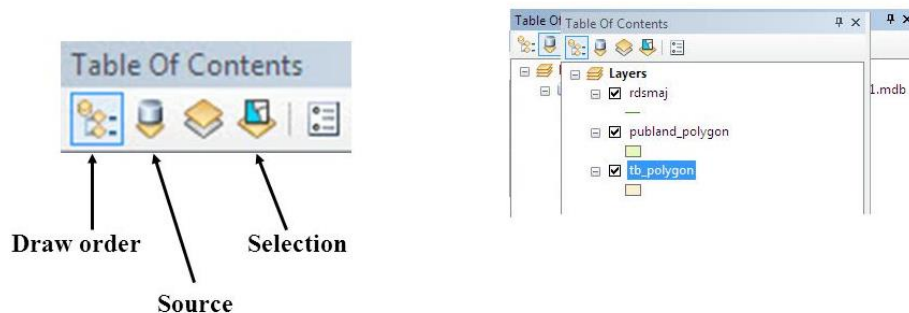


Figure.V.21. The ArcMap : Table of Contents.

[\[https://slideplayer.com/slide/6114131/\]](https://slideplayer.com/slide/6114131/)

V.10.2 Visualization window

The ArcMap viewing window displays the geographical data selected in the table of contents as an overlay of layers on top of each other according to the order defined in the table of contents (the first layer of the table of contents will be displayed above the others in the viewing window) (see **Figure. V.22.**).

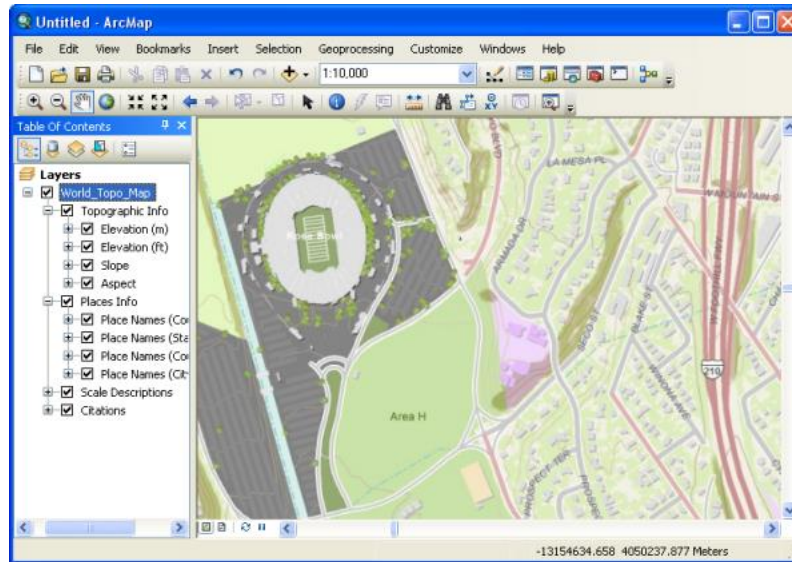


Figure.V.22. The ArcMap : Visualization window.

[<https://desktop.arcgis.com/fr/arcmap/10.4/map/main/mapping-and-visualization-in-arcgis-for-desktop.htm>]

V.10.3 Menu bar

A menu including a whole series of functionalities in the form of drop-down menus.

V.10.4 Toolbars

Allowing various operations via button.

V.11 Managing layer visibility and selections

V.11.1 Managing layer selection

To display / not display a layer, simply check / uncheck the box located at left of the layer name. Note that it is possible to (un)check everything by pressing on "CTRL" by (un)checking a single box (see **Figure. V.23.**).

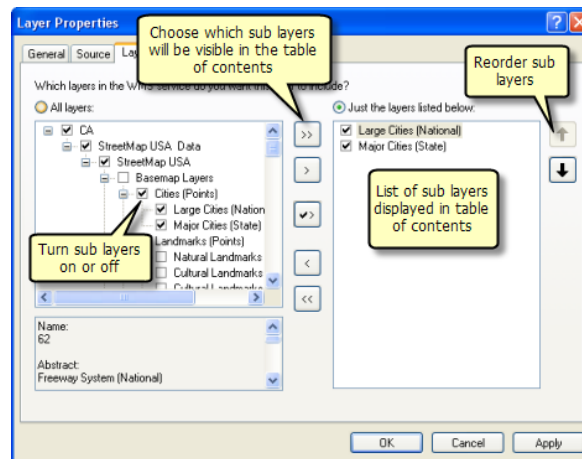


Figure.V.23. The ArcMap : Layer selection properties.

V.11.2 Managing layer visibility

Three mode existed to manage the layer visibility (see **Figure. V.24.**):

- List Default visibility
- List By Drawing Order Visibility
- List by visibility

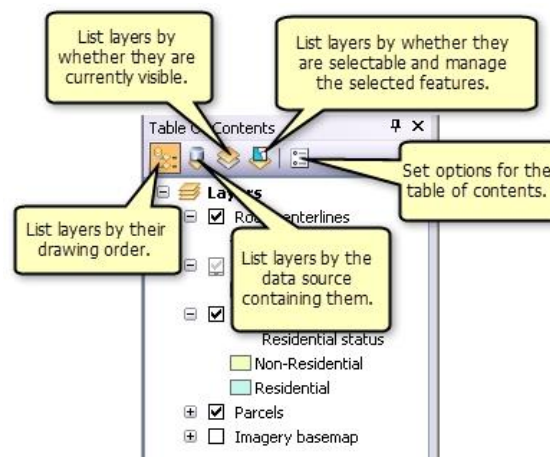


Figure.V.24. The ArcMap : Layer visibility properties.

[<https://www.esri.com/arcgis-blog/products/arcgis-desktop/data-management/managing-layer-visibility-and-selections/>]

V.11.2.1 List Default visibility

When adding new layers to a map, ArcMap overlays layer types by default in the following order: points (above), lines, polygons, raster (below). To change this order, select a layer by clicking on its name and move it below or above its original location.

V.11.2.2 List By Drawing Order Visibility

Use List By Drawing Order to author the layers, such as specifying layer order and renaming the layers.

V.11.2.3 List by visibility

List By Visibility because shows information about the features within the layers. Layers are grouped by whether they are shown on the map and are categorized by Visible, Out of Scale Range, or Not Visible.

V.12 Set Data Source.

To “repair” a “source path” of data (see **Figure. V.25.**),

- a. Right-click on the name of the layer concerned,
- b. Go to “Data > Repair data source...”.
- c. Then navigate (using the “Look in” tab) to the directory where the geographical data corresponding to this layer "Data source path\FileName.shp »
- d. Click “Add”.

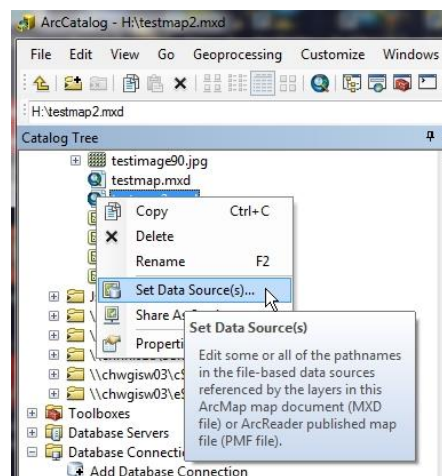


Figure.V.25. The ArcCatalog : Changing Data Paths in MXD Files.

<https://www.esri.com/arcgis-blog/products/arcgis-desktop/data-management/managing-layer-visibility-and-selections/>

V.13 Set the visualization scale range of a layer.

In order to redefine the visualization scale range of a layer (see **Figure. V.26.**),

- a. Right-click on the name of the layer concerned,
- b. Go to “Properties...”
- c. Choose the “General” tab and look at the “Scale Range” box.
- d. Check “Show layer at all scales”.
- e. Click “OK”

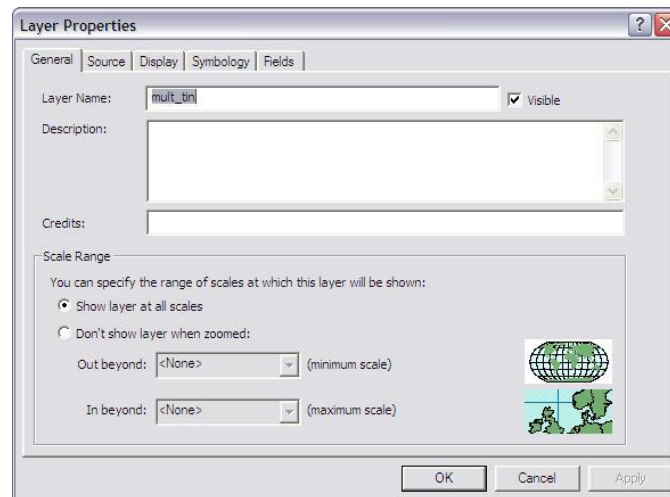


Figure.V.26. The ArcCatalog : visualization scale range of a layer.

[\[https://dusk.geo.orst.edu/buffgis/Arc9Labs/Lab2/lab2.html\]](https://dusk.geo.orst.edu/buffgis/Arc9Labs/Lab2/lab2.html)


V.14 Definition of the environment coordinate system

V.14.1 Coordinate system for a ArcMap project.

The first thing to do when creating a new ArcMap project is to set the coordinate system in which you want to work.

As you will be working on a global database expressed in the system “GCS WGS 1984”, use this system.

To do this,

- a. Right-click on the “data block”  in the “Table of contents”
- b. Go to “Properties...”.
- c. In the “Coordinate System” tab, you will see that there is still no system of coordinates defined for this project (“No projection”).
- d. Choose “Predifined \Geographic Coordinate Systems \World\WGS 1984”

Information about this coordinate system is presented in the "Current Coordinate System".

- e. Then click “OK” and check the name and system of your data block.

V.14.2 Coordinate system for a Map Layer



- a. Right click on the title of your Map Layer in the Table of Contents of ArcMap. Choose Properties at the bottom of the pop up menu.
- b. Click on the Source tab.

- c. In the Data Source section, there should be a label that says Geographic Coordinate System or Projected Coordinate System. This tells you which Coordinate System this map layer uses.
- d. Check all of your other Map Layers to make sure that they are using the same Coordinate System. If not, use the directions below to change the Coordinate Systems to match one another.

V.15 Add data.

Several methods exist to add data to ArcMap project:


V.15.1 17.1. Add data present on your PC using the “Add data” button

- a. Click on the button  allowing you to add geographical data in ArcMap.
- b. Then click on the button  allowing you to create a new connection (a shortcut) to your working directory. Connect to the directory where all your data is located, in this case: “D:\Initiation ArcGIS SIG ACE\DATA\”
- c. Click OK Your new working directory appears in the “Catalog” of the “Add Data” window.
- d. Then navigate to the directory containing the data you will need for this particular project, in this case: "D:\ Initiation ArcGIS SIG ACE\DATA\3 Add Attribute Selection \"
- e. Select all of the existing data (*.shp) present in the corresponding directory.
- f. Click “Add”.

Your data is added to the viewing window.

V.15.2 17.2. Add XY point data (GPS for example) to from a spreadsheet (Excel or Access for example).

To import point data from a spreadsheet,

- a. Click on the “Tool” drop-down menu in the main menu bar of ArcMap
- b. Select “Add XY Data...” 
- c. Navigate to your localized spreadsheet in “D:\Initiation ArcGIS SIG ACE\DATA\3 Add Attribute Selection\” and select the table and spreadsheet of interest.
- d. Select the fields in your spreadsheet that correspond to the X and Y coordinates points to import.
- f. Specify the coordinate system in which your points are expressed using the

“Edit...” button. Two possibilities are available :

- “Select”, to navigate to the coordinate system of your XY points.

- “Import”, to import the coordinate system from a file of already existing geographical data and having the same system of coordinates as that of your XY points. Navigate to the file “countries.shp
- g. Click “OK”.

V.16 The attribute table

The "attribute data" of a geographic data file or "Attribute Table" (the .dbf file) are easily accessible in ArcMap. These data are used frequently for various operations such as the selection of data, the use of a symbology, etc.

In the attribute table (see **Figure. V.27.**), 1 row (or a "record") corresponds to 1 entity spatial. 1 spatial entity can be composed of several polygons or lines or points, spatially distinct.

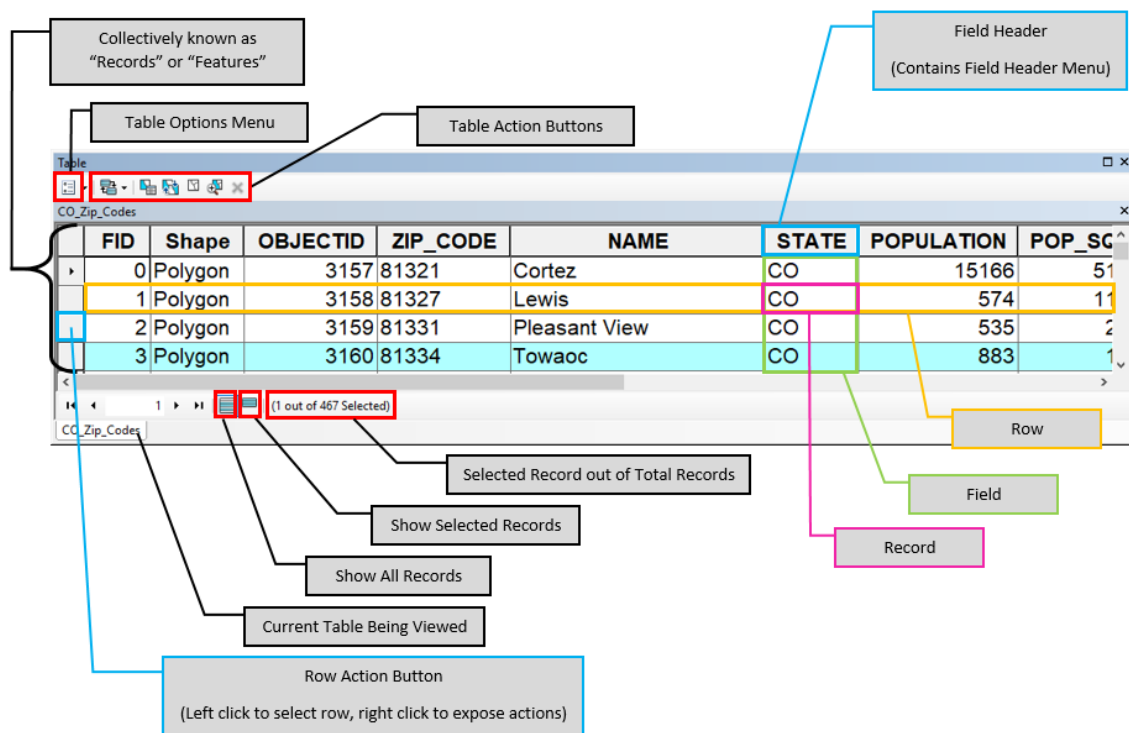



Figure.V.27. The ArcCatalog : Attribute table basics.

[https://vector.geospatial.science/ArcMap_Data_View/attribute_tables]

V.16.1 Access to the attribute table.

You have two options for accessing attribute data in ArcMap:


- Opening the “Attribute Table”
- Identification tool 

V.16.2 Opening the attribute table.

- a. Right-click on the name of the layer whose attribute table you want to view
- b. Click “Open Attributes Table”

The layer's attribute table opens.

V.16.3 The identification tool.


- a. Click on the identification tool  on the “Tools” toolbar
- b. Then click on the spatial entity for which you wish to access the information of the attribute table.
- c. An identification window for this spatial entity appears and presents all the information from the attribute table of this entity (corresponding to a row of the attribute table and all columns/attributes of the table).

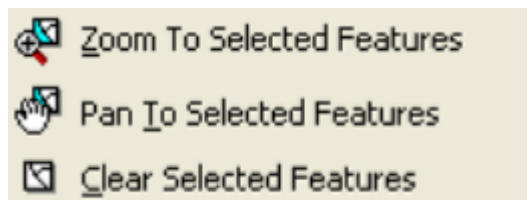
V.17 Select data

In order to work on a reduced set of data and to see more clearly in your interface it can be useful to select some spatial entities of interest to be able to export them as a separate file.

V.17.1 Simple selection.

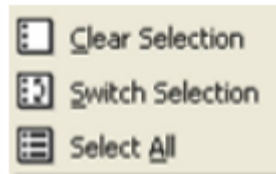
The easiest selection method is to manually select features spatial. This type of selection can be done in 2 ways,

- a. In the viewing window with **the selection tool**  (“Select Features Tool”) from the “Tools” toolbar.
 - Click on the selection tool
 - Click on the entity(ies) to select
 - A right-click gives you the possibility to carry out the following operations on the entity(ies) selected:



- b. In the attribute table,
 - Click on the small gray square at the far left of each row to select the entity corresponding to this line

- The "Options" button of the attribute table gives you the possibility of carrying out the following operations on the selected entity(ies):



In order to facilitate a search in the attribute table before a simple selection, you can carry out an **ascending or descending classification** of your data according to a field particular, via the

buttons  available by right-clicking on a header of attribute table field.

In addition to these simple selection methods, ArcMap makes it possible to carry out **queries of search / selection of entities** on a spatial and attribute basis (following section).

V.17.2 Selection by Attribute.

Selection by attributes makes it possible to select one or more spatial entities on the basis of their attributes using an SQL-like query.

- Click on "Selection > Select By Attributes..." in the main menu bar of ArcMap
- Choose from the "Layer:" drop-down menu the layer in which you want create a new selection, in this case, "Populated_places_PAKISTAN".
- Choose from the "Method:" drop-down menu the method of selection, in this in this case "Create a new selection", to create a new selection.
- Then double-click on the [Place_type] field header in the first box White.

[Place_type] must appear in the lower white box ("SELECT * FROM Populated_places_PAKISTAN WHERE:") where your SQL query is written as you write it.


- Single-click the "=" button,
- Click on the "Get Unique Values" tab showing all the values existing for the field selected in the first white box, here [Place_type]
- Double-click on "earth" in the white box where the types of main constructions in the villages.

Your SQL query should be the same as "[Place_type] = 'earth'".

- Click "OK".

In your visualization window, the spatial entities corresponding to your request for selection are now selected (outline in light blue by default). To see it, the layer in which you made the selection must be made visible by checking it in the table of contents.

The **selection by attribute** is also directly available in the attribute table of the vector layers: "Right click on the layer name > Open Attribute Table > tab "Options" > Select By Attributes" and the select by attribute interface for this layer appears.

The “**Find and Replace**” button  Find & Replace... available in the table options attributes allows you to search and/or replace a certain value in the table.

V.17.3 Verify if a selection is correct:

To verify if a selection by attribute is correct, we have two ways :

- a. Click on **the identification tool** then on a few selected entities and check the information that appears.
- b. Open the attribute table of the “Populated_places_PAKISTAN” layer (click right on the name of the layer "Commons" > Open Attributes Table") and activate the "**Selected**" tab at the bottom of the attribute table to only display in the table of attributes that the entities (villages in this case) selected (in light blue by fault).

V.17.4 Selection by Location

The selection by location allows to select one / several spatial entities of a layer based on the spatial relationship (relative position) of this layer with another layer.

You are going to select the earthen villages that are located in the maximum area in which the flood is likely to have serious consequences on the populations, either, in terms of techniques, the earthen villages located in the buffer zone identified by the file

“Indus_downstream_Tarbela_Dam_10km_buffer.shp”

- a. Click on “Selection > Select By Location...” in the main menu bar of ArcMap
- b. Choose from the “I want to:” drop-down menu, and the method of selection, in this
- c. this case “select features from”
- d. Select the “Populated_places_PAKISTAN_earth” layer in the white box “the following layer(s):”
- e. Select "that:" "Intersect" from the following drop-down menu
- f. Select “the features in this layer:”
- g. “Indus_downstream_Tarbela_Dam_10km_buffer” in the next drop-down menu
- h. Click “OK”

V.17.5 Other features available for selections

ArcMap offers other features for selecting or acting on a selection. To you to discover them via the following paths:

- a. Main menu > Selection
- b. Right click on a layer > Selection
- c. In the attribute table > "Option" menu

V.18 Create a file from a selection layer or Export file.

If you wish to create a new file from the entities you have selected (or simply export data to a new file), all you need to do is:

- a. Right-click on the name of the layer whose features you want to export selected (or on the layer without selected entities in the case of a simple export of the file),
- b. Choose “Data > Export Data...”
- c. Choose to export selected features (“Selected features”) using the same coordinate system as (“Use the same coordinate system as:”) the source data layer (“this layer’s data source”)
- d. Then click on the yellow folder to save the new “shapefile” that you will create in the directory of your choice using the "Output shapefile or feature class: » box, giving it an appropriate name.
- e. Click “Save”
- f. Click “OK”. The export takes a little time.
- g. Answer “Yes” to the question “Do you want to add the exported data to the map have a layer? », to add the newly created shapefile in ArcMap.
Your new file appears in ArcMap.
- h. Delete (in the table of contents: right click on the layer > Remove) or possibly deactivate (uncheck) the file from which the new file is taken created in order to better visualize the latter in the ArcMap interface (optional).

V.19 Join and Relationship between 2 tables.

ArcMap provides 2 methods to associate different tables with each other (attribute table or other tables) (see **Figure. V.29.**):

- a. Join (“Join”): allows you to add, in the attribute table of the file from from which you are joining, the fields of another table, based on a field containing information common to both tables or on a spatial basis.
- b. Relation (“Relates”): establishes a link, based on a field containing information common, between two tables but does not add the fields of a table in a other. The information of a table is accessible from the associated table.

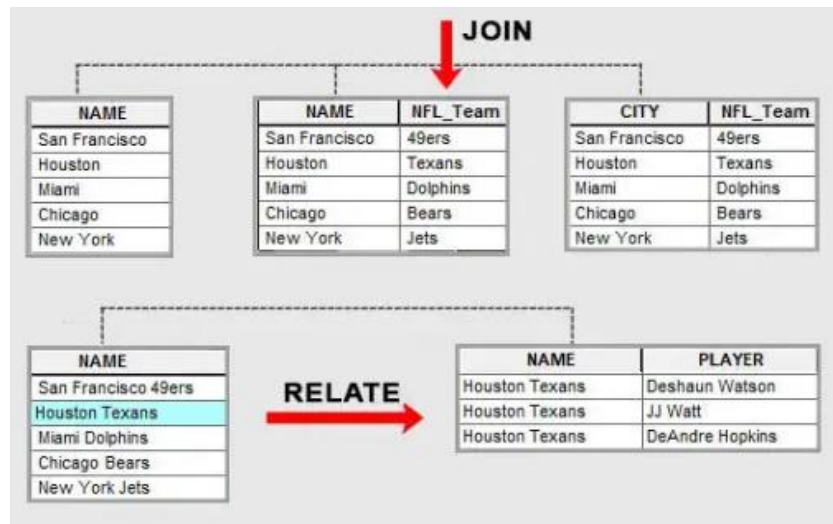


Figure.V.29. Relate vs Join for Attribute Tables in ArcMap.

<https://gisgeography.com/relate-vs-join-attribute-tables-arcgis/>

V.19.1 Create a join between 2 tables

Two types of joins exist in ArcMap:

- Joint based on an attribute common to 2 tables
- Join based on the spatial location of features from 2 files

The same "row" of "Table_2" can be associated with several "spatial entities different" or "different rows of the attribute table" from "Table_1" (Figure 10a).

In the case of an attribute-based join, only one "row" of "Table_2" can be associated with a given "line" of "Table_1".

In the case of a join on a spatial basis, several "rows" of "Table_2" can be associated with a given "line" of "Table_1" via an aggregation of the values of the "Table 2" using a simple mathematical formula (sum, average, etc.) (Figure 10b).

V.19.2 Join based on an attribute common to 2 tables

The join based on an attribute joins a data table to a layer based on the value of a field present in both tables. The field name does not have to be the same, but the data type does (see **Figure. V.30.**).

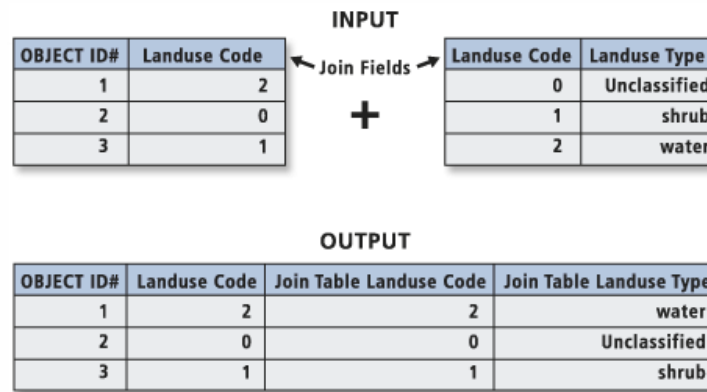


Figure.V.30. Join based on an attribute on ArcMap.

[<https://desktop.arcgis.com/fr/arcmap/10.3/tools/data-management-toolbox/add-join.htm>]

To establish a join based on an attribute common to 2 tables (Figure 11),

1. (Close "Table_1" if it was open)
2. Right-click on the name of the layer ("Table_1") to which you want to join the data from another table ("Table_2")
3. Choose "Joins and Relates > Join..."
4. Select "Join attributes from a table" in the box "What do you want to join to this layer? »
 - Choose the field from "Table_1" on which to base the joint
 - Choose the table to join to this layer ("Table_2")
 - Choose the field of "Table_2" on which you want to base the joint
5. Click "OK"

To view your join, open the attribute table of "Table_1" or of the file exported from the table containing the join. You notice that the fields of the "Table_2" was joined to "Table_1".

To cancel a join, right-click on the name of your layer and go to "Join and Relates > Remove Join(s) >" and select the joint to remove.

To save your join in a new file, right-click on the name of your layer and go to "Data > Export Data..."...

V.19.3 Join based on feature location of 2 files

The spatial join combines the attributs of features in two layers (tables) based on on location or proximity, i.e., one feature closest on thtoe another or one feature inside another (see **Figure. V.31.**).

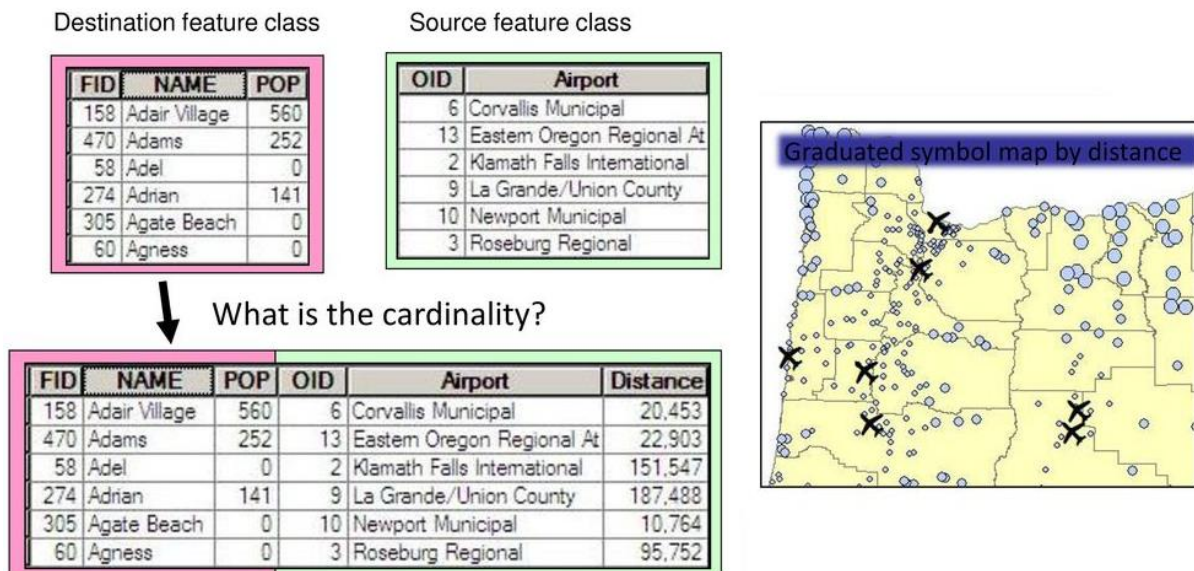


Figure.V.31. Spatial Join based on distance : which airport is closest to the city.

[\[https://desktop.arcgis.com/fr/arcmap/10.3/tools/data-management-toolbox/add-join.htm\]](https://desktop.arcgis.com/fr/arcmap/10.3/tools/data-management-toolbox/add-join.htm)

To establish a joint based on the location of the entities of 2 files

1. Right-click on the name of the layer ("Table_1") to which you want to join the data from another table ("Table_2")
2. Choose "Joins and Relates > Join..."
3. Select "Join data from another layer based on spatial location" in the box "What do you want to join to this layer? »
 - Choose the "Table_2" layer to join to the "Table_1" layer Point 2 of the menu tells you what type of join you are making (in the case of the "Mali" exercise: "Points to Points").
 - Choose the type of spatial join you want to perform (in the case of the "Mali" exercise: the second option)
 - Choose the directory and name of the layer you are creating by performing this spatial join. (in the case of the "Mali" exercise: "Puits_villages_spatial_join.shp" in the folder "D:\Initiation ArcGIS SIG ACE\DATA\4 Join Relate Stats Compute in table»)
4. Click "OK"

The attribute table of the file you just created contains the initial fields of the "Table_1" and the joined fields of "Table_2". Depending on the method you choose, either a "summary" of the attributes of the entities of "Table_2", or the attribute of the entity of the "Table_2" closest to the entity of "Table_1" will be attached to the attributes of the "Table_1".

V.20 Create a relationship between 2 tables

To create a relationship between two tables,



Right-click on the name of the layer ("Table_1") to which you wish to link the data from another table ("Table_2")

1. Choose “Join and Relate > Relate...”
2. Choose the field of "Table_1" on which you want to base the link
 - Choose the table to link to this layer (“Table_2”)
 - Choose the field of "Table_2" that you want to link to "Table_1" on which you are streaming basing the link
 - Name your link, for example “Relate 1”.
3. Click “OK”

You can access this relationship in 2 different ways:

- **Access a relation by the attribute table**
 1. Open the attribute table of layer "1"
 2. Select a spatial entity / line
 3. Go to “Options > Related Tables > Relate1: Table 2”

“Table 2” opens with the related spatial features/lines selected.

- **Access a relationship using the identification tool** 
 1. Click with the identification  tool on an entity of "Layer 1"
 2. Click on the “+” signs in front of the name of the selected recording to access the related table information corresponding to this entity.

V.21 Calculate statistics in the attribute table

Two methods allow you to obtain statistics on an attribute table.

V.21.1 The “Summarize” tool

The “Summarize” tool creates a new table containing a single row for each value unique of the selected field, and calculates the statistics for the other fields.

1. Right-click on the header of a field in the attribute table of the file of interest
2. (Well_villages_spatial_join.shp)
3. Click on “Summarize...”
 - Choose the field to “summarize” (village)
 - Choose the field(s) for which you want to calculate statistics (daily quantity of water from wells, i.e. the column “Well_water”) and choose the type of statistics (Sum)
 - Name and save your statistics table in the directory of your choice, “Somme_eau_par_village.dbf” in the folder “...\4 Join Relate Stats Compute in table»
4. Click “OK”

Answer “Yes” to the question “Do you want to add the result table in the map? » to add this table to your table of contents, visible in "Source" mode only (“Source” tab of the table of contents) because there is no source file forms associated with this table.

V.21.2 The “Statistics” tool.

The “Statistics” tool is used to calculate the main statistics (Total number, max, min, Sum, Mean, Standard Deviation), as well as a graph of the distribution of the frequency of values of a selected field.

1. Right-click on the header of a field in the attribute table
2. Click on “Statistics...”

V.22 Suggested reading

Tripp Corbin, G. I. S. P. (2015). Learning ArcGIS Pro. Packt Publishing Ltd.

Shellito, B. A. (2015). Discovering GIS and ArcGIS. Macmillan Higher Education.

Law, M., & Collins, A. (2015). Getting to know ArcGIS (p. 768). Redlands: ESRI press.

Kennedy, M. D. (2013). Introducing geographic information systems with ARCGIS: a workbook approach to learning GIS. John Wiley & Sons.

Scott, L. M., & Janikas, M. V. (2010). Spatial statistics in ArcGIS. In Handbook of applied spatial analysis (pp. 27-41). Springer, Berlin, Heidelberg.

Rodgers, A. R., Carr, A. P., Beyer, H. L., Smith, L., & Kie, J. G. (2007). HRT: home range tools for ArcGIS.

Law, M., & Collins, A. (2019). ArcGIS Pro.

Kennedy, M. D. (2013). Introducing geographic information systems with ARCGIS: a workbook approach to learning GIS. John Wiley & Sons.

Johnston, K., Ver Hoef, J. M., Krivoruchko, K., & Lucas, N. (2001). Using ArcGIS geostatistical analyst (Vol. 380). Redlands: Esri.

Allen, W. (2011). GIS tutorial, for ArcGIS, Spatial Analysis Workbook 2.

Longley, P. (2003). Advanced spatial analysis: the CASA book of GIS. ESRI, Inc..

Childs, C. (2004). Interpolating surfaces in ArcGIS spatial analyst. ArcUser, July-September, 3235(569), 32-35.

Appendix

Glossary Terms used in GIS and Spatial Data Development and Analysis

Active remote sensing system: A system that both emits energy and records the energy returned by target objects.

ArcGIS: A GIS software package produced by Environmental Research Systems.

Atmospheric distortion: Image displacement due to the bending of light as it passes through the atmosphere.

Attribute: Non-spatial data associated with a spatial feature.

Geospatial: A suite of GIS software systems.

AVHRR: Advanced Very High Resoluton Radiometer.

Binary classification: A classification of spatial objects into two classes, typically denoted by a 0 class and a 1 class.

Bit: A binary digit.

Byte: A unit of computer storage consisting of 8 binary digits. A byte may store up to 256 different values.

Cartesian coordinate system: A right-angle two or three-dimensional coordinate system.

Cartographic modeling: The combination of spatial data layers through the application of spatial operations.

Cartographic object: A digital representation of a real-world entity.

Classification: A categorization of spatial objects based on their properties.

Coordinates: A pair or triplet of numbers used to define a position in space.

Data model: A method of representing spatial and aspatial components of real-world entities on a computer.

Database management system (DBMS): A collection of software tools for the entry, organization, storage, and output of data.

DEM: Digital Elevation Model, a raster set of elevations.

Electromagnetic spectrum: A range of energy wavelengths.

Entity: A real world item or phenomenon that is represented in a GIS system or database.

ERDAS: A GIS and remote sensing image processing software package.

ETM+: Enhanced Thematic Mapper.

Feature: An object or phenomenon in the landscape.

High-pass filter: A raster operation that identifies large or high-frequency differences between cells.

Ikonos: A high resolution imaging satellite system.

Items: Variables or attributes in a data table

Idrisi: A GIS system.

Infrared image: An image that records reflectance in the near infrared wavelengths.

JPEG: An image compression format.

Latitude: Spherical coordinates of Earth location that vary in a north-south direction.

Lidar: Laser detecting and ranging.

Local operation: A spatial operation where the output location, area, or extent comes from operations on that same extent.

MapInfo: GIS software package produced by MapInfo.

Map projection: A systematic rendering of features from a spheroid or ellipsoid representing the 3- dimensional Earth to a map surface.

MSS: Multi-spectral Scanner.

MODIS: Moderate Resolution Imaging Sensor.

NOAA: National Oceanic and Atmospheric Administration.

Polygon: A closed, connected set of lines that define an area.

Polygon inclusion: An area different in some characteristic from the recorded attributes of the polygon, but not resol

Raster data model: A regular “grid cell” approach to defining space.

Registration: The conversion or assignment of coordinates from a non-projected coordinate system to a coordinate system, typically via an affine transformation.

Slope: The change in elevation over a change in location.

Spatial operation: A logical, mathematical, selection, or other spatial process that transforms spatial data.

Spectrum: see electromagnetic spectrum

SPOT: Systeme Pour l’Observation de la Terre.

TIFF: Tagged Image File Format.

TM: Thematic Mapper.

USGS: United States Geological Survey - the U.S. government agency responsible for most civilian nationwide mapping and spatial data development.

UTM: Universal Transverse Mercator coordinate system.

Vector data model: A representation of spatial data based on coordinate location storage for shapedefining points and associated attribute information.

Wavelength: The distance between peak energy values in an electromagnetic wave.