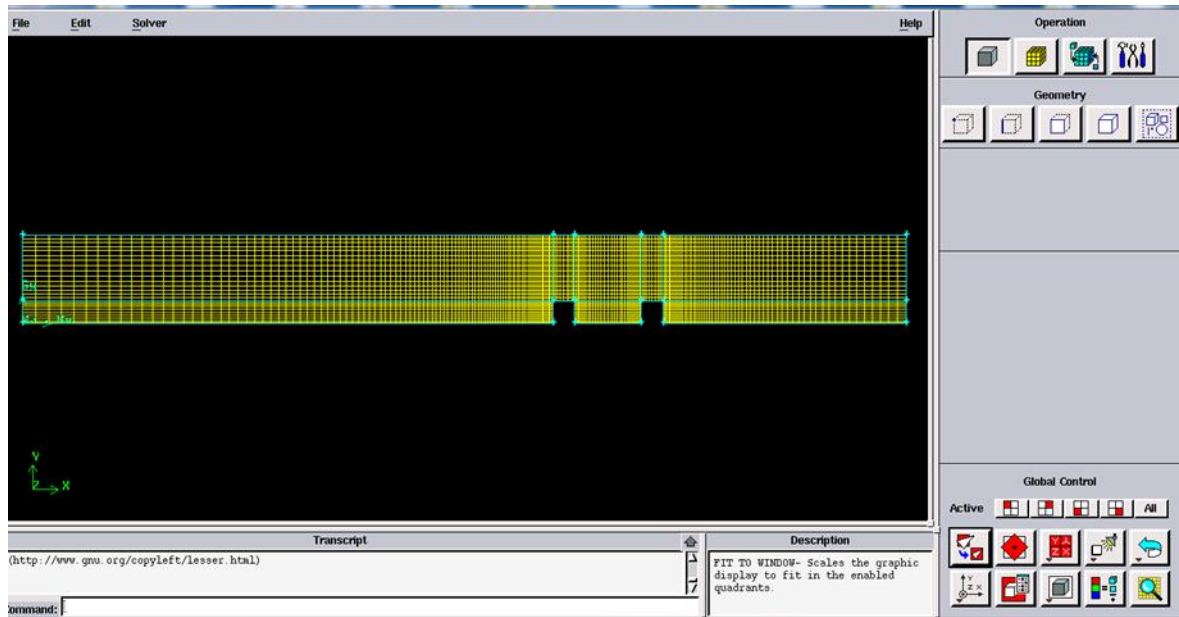


Annexe

III.1. Création de la géométrie et maillage en GAMBIT



III.2. Profile de vitesse à l'entrée

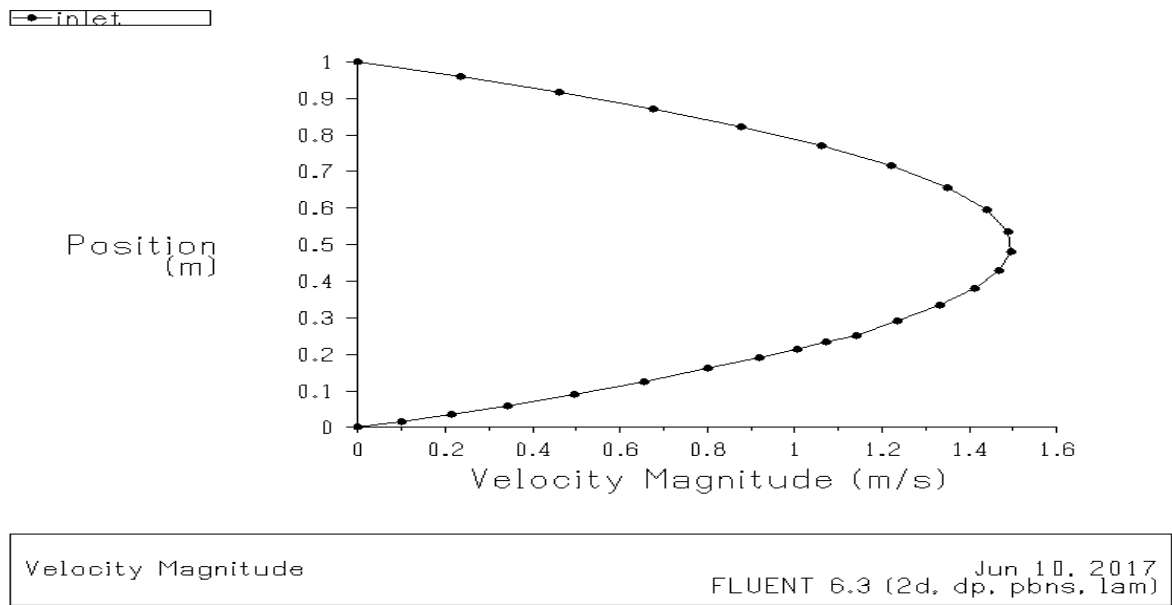
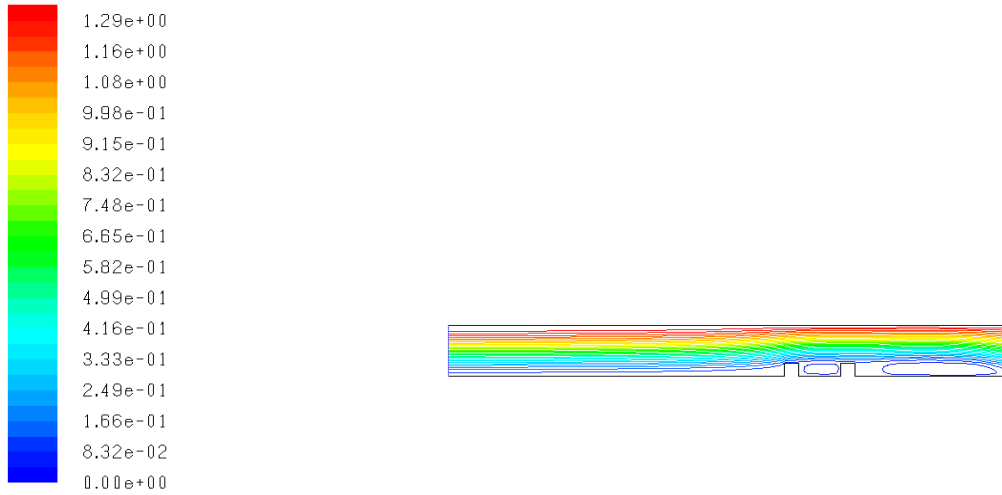


Figure III.2 : Profile de vitesse à l'entrée

III.2.1 Validation dynamique

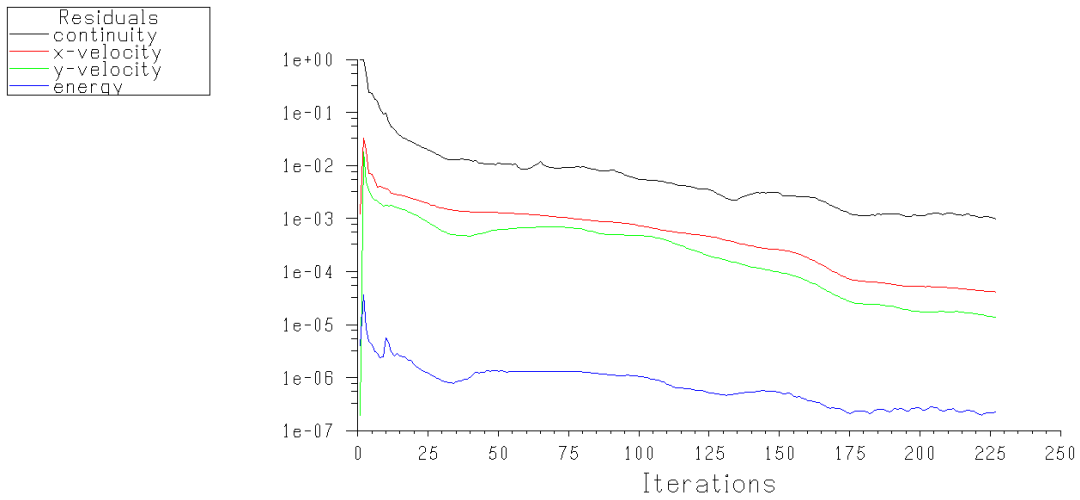


Contours of Stream Function (kg/s)

FLUENT 6.3 (2d, dp, pbns, lam) Jun 10, 2017

Figure III.3 ligne de courant autour des obstacles (nos résultats)

III.4.2. Critère de convergence



Scaled Residuals

FLUENT 6.3 (2d, dp, pbns, lam) Jun 10, 2017

Figure III.6: Les courbes de résidus.

III.4.3. Contour de température

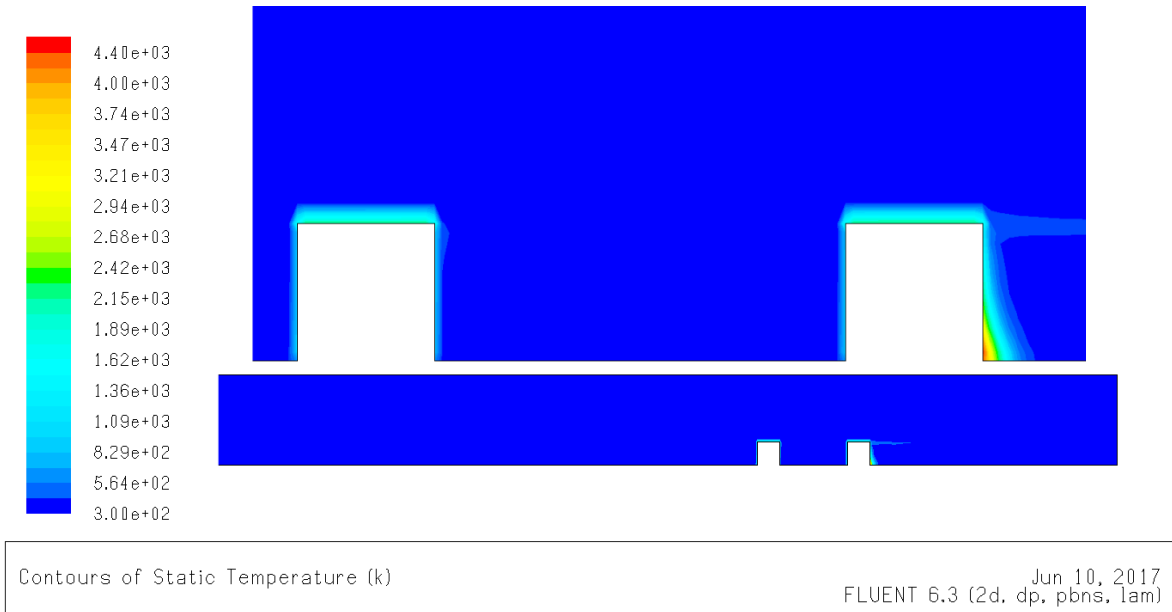


Figure III.7 : Contour de température

III.4.4. Champs de vitesse

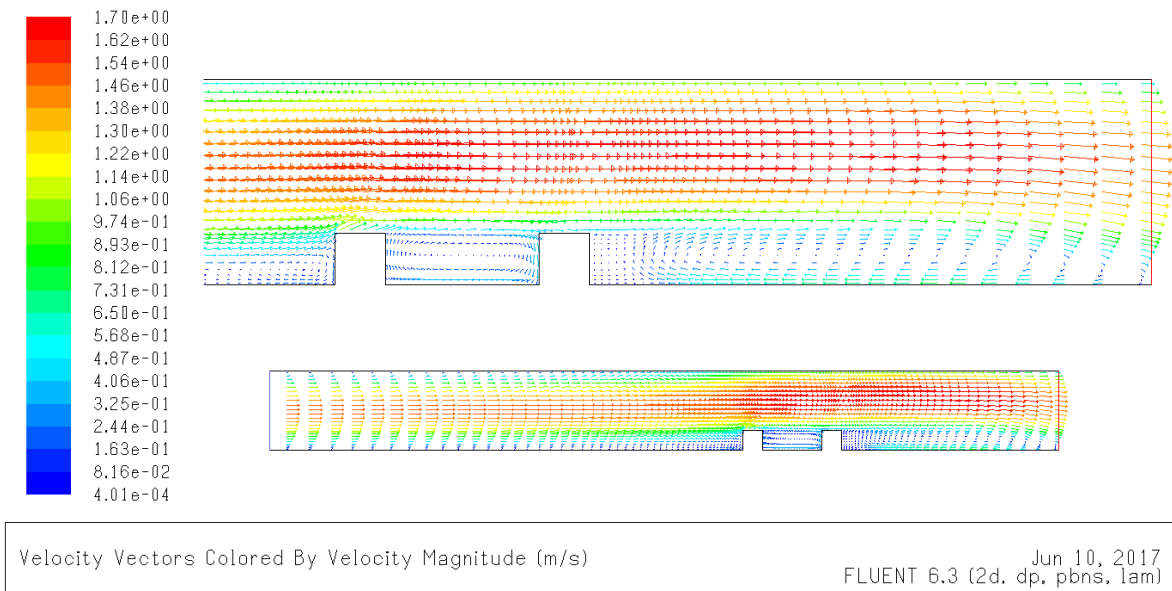
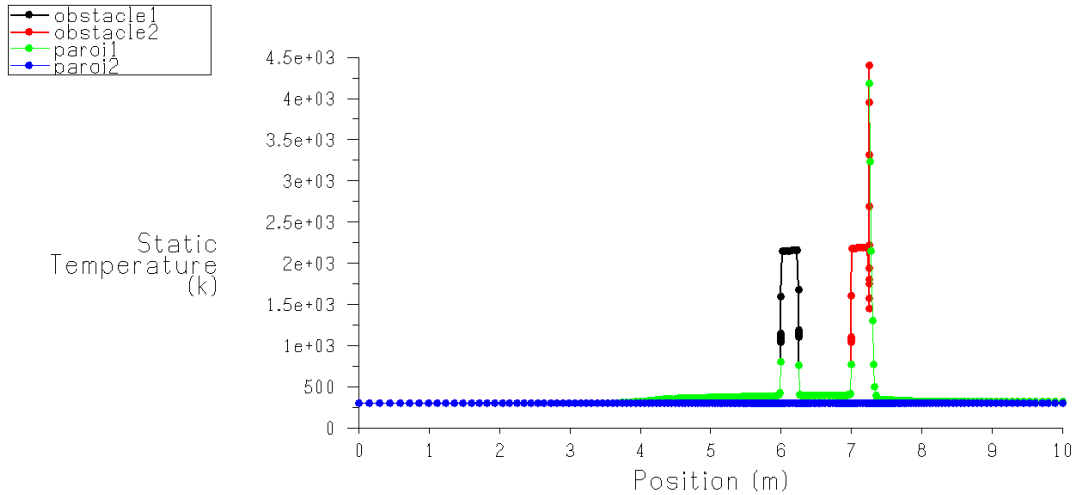


Figure III.8 : Champs de vitesse

III.4.5. Le profil de température

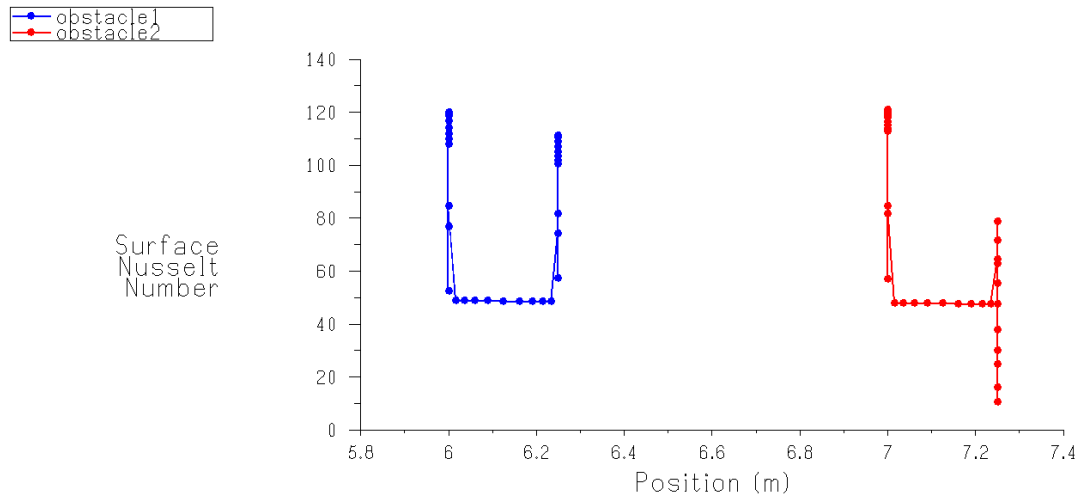


Static Temperature

Jun 10, 2017
FLUENT 6.3 (2d, dp, pbns, lam)

Figure III.9 : Profil de température.

III.4.6. Nombre Nusselt



Surface Nusselt Number

Jun 10, 2017
FLUENT 6.3 (2d, dp, pbns, lam)

Figure III.10 : Profil de nombre de Nusselt.